



MELBOURNE
ROYAL
BEEF CARCASE COMPETITION



2023 Results Catalogue

Presenting the 2023 Melbourne Royal *Beef Carcase* Competition



MELBOURNE
ROYAL
BEEF CARCASE
COMPETITION

Contents

Supporter List	4
Judges	4
Official Acknowledgement	5
2023 Melbourne Royal Beef Carcase Competition Results	7
Live Champion Awards	7
School and College Awards	10
Carcase Champion Awards	14
Steer Bonanza	14
The Borthwick Trophy	16
Carcase Results	17
Exhibitor List	22
Office Bearers	23

Supporter *List*

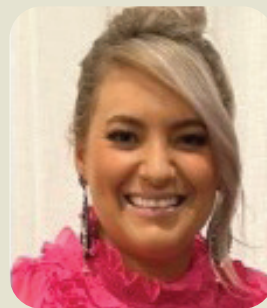
HW Greenham & Sons And Mulcahy Nelson Livestock
Melbourne Royal®

Judges



Peter McGilchrist

Peter judged at the Queensland Royal Show (Ekka) in 2022 and in the same year also judged at the Scone Beef Bonanza. He is well suited to the judging of the Beef Carcase competition having been part of the University of New England (UNE) Meat Judging team in 2002, and the 2003 Australian Intercollegiate Meat Judging team that competed in the USA. Following this he coached the UNE team to success in 2003 and 2004.



Kim Falls

Kim lives in Finley in the Riverina NSW where she lives on a family run property with her husband Lockie and their children Charlie & Sophie. Growing up in the Hawkesbury NSW, Kim's agricultural background started at school which saw her grow up through the junior movement competing at various youth events, steer programs and cattle shows across Australia then onto employment in the industry. Kim is involved with the operators of their Australia wide livestock transport business and the Falls Family's Malton Shorthorn stud operator. Kim is a passionate advocate for youth in agriculture, being able to share her knowledge and experience with others who aspire to do the same. Kim has been involved with the running of many junior events in the past such as the Limousin Youth programs, Angus Roundup and the Victorian Beef Handlers Camp for many years. Kim is very honoured to be judging the Beef Carcase Handlers Competition as competitions like this is where it all began for her.

Official *Acknowledgement*

Melbourne Royal acknowledges and thanks all officials for their generous contribution towards the success of the 2023 Melbourne Royal Show Beef Carcase Competition.

Judges

Peter McGilchrist

Kim Falls

Stewards

Aimee Bolton

David and Marion Spencer

Jo Mclauchlan

Allen Snaith

David Bolton

Matt Cooney

Barry Ray

Gary Turnham

Noelene King

Chloe Butterworth

Geordie Elliott

Vanessa Wenn

Cindy Smith

Jessica Sharp



Thank you for being a part of the Beef Carcase Competition at this year's Melbourne Royal Show, commemorating *Melbourne Royal's remarkable 175-year history.*

Your participation as an exhibitor in this event was truly valued. Since its inception as the Moonee Ponds Farmer's Society in 1848, Melbourne Royal has steadfastly celebrated agriculture, and your involvement significantly contributed to our rich legacy. As we marked 175 years of this organisation, we were delighted to present commemorative ribbons and prizes.

We trust your experience as an exhibitor at the 2023 Melbourne Royal Show was exceptional. We hope you enjoyed your time at the Melbourne Showgrounds, as we continue to celebrate our past and nurture the promising future of Melbourne Royal.



**MELBOURNE
ROYAL**

CELEBRATING
175 YEARS
1848 - 2023

2023 Melbourne Royal Beef Carcase Competition Results

Live Champion Awards

Grand Champion Steer or Heifer	
164	Jacob Kerrisk / Shaw's Livestock: (LL), Bred By: Flemington , 5 Aug 2022, Sire: Flemington Ready To Roll R20, Dam: Flemington Honky Tonk P49
Champion Domestic Steer or Heifer	
198	North Ulandi: (LL), Bred By: Limek Limousins, 6 Sep 2022, Sire: Flemington Ready To Roll, Dam: Limek Lippy
Reserve Champion Domestic Steer or Heifer	
200	North Ulandi: (LL), Bred By: Spences Show Steers, 14 Oct 2022, Sire: Mandayen Western Star, Dam: Mandayen Special Cookie
Champion Heavy Domestic Steer or Heifer	
164	Jacob Kerrisk / Shaw's Livestock: (LL), Bred By: Flemington , 5 Aug 2022, Sire: Flemington Ready To Roll R20, Dam: Flemington Honky Tonk P49
Reserve Champion Heavy Domestic Steer or Heifer	
199	North Ulandi: (LL), Bred By: Limek Limousins, 8 Aug 2022, Sire: Limek Potent, Dam: Limek Pleur
Champion Export Steer or Heifer	
148	Grant High School: (SIXSI/HH), Bred By: G & V Muller, 4 Mar 2022, Sire: Tennysonvale itrate, Dam: Rellum Farms YN200
Reserve Champion Export Steer or Heifer	
162	Jones Farms: (AAXAAXBS), 21 Mar 2022, Sire: Square B True North 8052 Usa19405246, Dam: Jones Farms Q69

2023 Melbourne Royal Beef Carcase Competition Results

LED

ORDINARY

LEDB01 - LED DOMESTIC (350KG TO 450KG) HEAT 1

Eligible Classes: 1

PRIZE: 1ST \$25, 2ND \$15, 3RD \$10, SASH

1	104	Arabar Livestock: (LLXAA), 15 Nov 2022, Sire: Arabar Livestock, Dam: Arabar Livestock
5	170	Lockhart Central School: (LL), Bred By: Summit, 1 Sep 2022
6	203	Pelican Rise Pty Ltd: (LL), 10 Sep 2022, Sire: Morrisvale Redmond, Dam: Pelican Rise Que
2	221	S&K Agricultural Services: (SQ), 6 Jul 2022, Sire: Willows Rest Zorro, Dam: Willows Rest Hey Jude
3	233	Trinity College: (SQ), Bred By: Willows Rest, 11 Jul 2022, Sire: Willows Rest Zorro J3, Dam: WR Jess J9
4	247	Riverton & District High School: (AL), Bred By: Riverton and District High School, 25 Jul 2022, Sire: Barossa Watson, Dam: Barossa Kayla

LEDB02 - LED DOMESTIC (350KG TO 450KG) HEAT 2

PRIZE: 1ST \$25, 2ND \$15, 3RD \$10, SASH

5	108	Billabong High School: (LL), Bred By: Mrs Margaret Pierce, 3 Sep 2022, Sire: Garren Park QUUUTREL, Dam: Belongo Park Commercial Cow
4	132	Finley High School: (HH), Bred By: Doyle Family, Claredale, 22 Aug 2022, Sire: Glentrevor Nixon
3	168	Lochclyde Pastoral Co: (AAXSI), 10 Aug 2022, Sire: J & C Jester, Dam: Arabar Commercial Simmental
1	183	Longerenong Agricultural College: (SS), Bred By: Marschay Shorthorns, 5 Sep 2022, Sire: Marschay Quizmaster Q74, Dam: Marschay Bella N31
6	206	Roly Park Shorthorns : (AS), 11 Nov 2022, Sire: Roly Park Renegade, Dam: Roly Park Red
2	212	Rutherglen High School: (LL), Bred By: Le Martres Limousin Stud (Leon Martin), 28 Jul 2022, Sire: Lempp17, Dam: Lempp100

LEDB03 - LED DOMESTIC (350KG TO 450KG) HEAT 3

PRIZE: 1ST \$25, 2ND \$15, 3RD \$10, SASH

3	149	Grant High School: (SPXLL), Bred By: T & M Bowering, 24 Nov 2022, Sire: Waratah Proactive, Dam: Weopa Lilly
6	177	Longerenong Agricultural College: (MG), Bred By: S Hines, Greenhills Murray Grey, 1 Aug 2022, Dam: Ghmg
4	184	Longerenong Agricultural College: (SS), Bred By: Ray Brook, Eloora Shorthorns, 14 Jul 2022
1	198	North Ulandi: (LL), Bred By: Limek Limousins, 6 Sep 2022, Sire: Flemington Ready To Roll, Dam: Limek Lippy
2	200	North Ulandi: (LL), Bred By: Spences Show Steers, 14 Oct 2022, Sire: Mandayen Western Star, Dam: Mandayen Special Cookie
5	211	Rutherglen High School: (LL), Bred By: Le Martres Limousin Stud (Leon Martin), 1 Sep 2022, Sire: Lempr60, Dam: Lempp104

LEDB04 - LED DOMESTIC (350KG TO 450KG) HEAT 4

PRIZE: 1ST \$25, 2ND \$15, 3RD \$10, SASH

4	118	Black Diamond Speckle Parks: (SPXAA), Bred By: Black Diamond Speckle Parks , 20 Aug 2022, Sire: Black Diamond Pressure Point P214
6	126	Erin Ferguson: (CC), Bred By: Golden Rose Charolias , 17 Oct 2022, Sire: Hrj Bulletproof 411B, Dam: Dsk K25 Flossy Q28
1	131	Finley High School: (CCXSP), Bred By: Jack Nelson, 2 Sep 2022
2	133	Finley High School: (OOXSS), 22 Aug 2022, Sire: Inra 95 Carmaux, Dam: FHS Quiz
5	185	Longerenong Agricultural College: (SS), Bred By: McKay Bros Shorthorn, 1 Sep 2022, Dam: Rb
3	201	North Ulandi: (LLXAA), Bred By: Limek Limousins, 31 May 2022, Sire: Limek Potent

LEDC01 - LED HEAVY DOMESTIC (450.1KG TO 520KG) HEAT 1

Eligible Classes: 1

PRIZE: 1ST \$25, 2ND \$15, 3RD \$10, SASH

4	101	Brian Alford: (CC), 14 Sep 2022, Sire: Kenmere QUE Q34e
2	102	Arabar Livestock: (LLXS), 1 Sep 2022, Sire: Arabar Livestock, Dam: Arabar Commercial Cow
6	113	Black Diamond Speckle Parks: (LL), Bred By: Macorna Limousin Stud , 31 Aug 2022, Sire: Macorna Recharge R728, Dam: Mandayen Nicky's Prize H2224
5	123	M. R. Draper & G. Ward: (RP), 4 Jul 2022, Sire: Redward Forest, Dam: Redward Gayla
3	134	Finley High School: (OOXSS), 30 Aug 2022, Sire: Inra 95 Carmaux, Dam: FHS Queen
1	159	Jackungah Speckle Park: (CCXMG), Bred By: Venturon Livestock, 14 Aug 2022, Sire: Venturon New Generation, Dam: Venturon Murray Grey

LEDC02 - LED HEAVY DOMESTIC (450.1KG TO 520KG) HEAT 2

PRIZE: 1ST \$25, 2ND \$15, 3RD \$10, SASH

6	140	Finley High School: (SSXOO), 19 Aug 2022, Sire: FHS Ron, Dam: FHS Latte
1	161	Jackungah Speckle Park: (SP), 2 Aug 2022, Sire: River Hill Traffic Jam 26T, Dam: Tumbleweed Acres Daisy 10X
4	175	Longerenong Agricultural College: (BAXSS), 6 Aug 2022, Dam: K05
5	192	Meadow Vale Australian Shorthorns: (AS), 19 Aug 2022, Sire: Spencer Family Zephyr M220, Dam: Meadow Vale Beauty H36
3	204	Rigdale Limousin: (LL), 29 Sep 2022, Sire: Keystone Johnny Cash
2	208	Roly Park Shorthorns : (AS), 27 Apr 2022, Sire: Roly Park Rambo, Dam: Roly Park Porsha

LEDC03 - LED HEAVY DOMESTIC (450.1KG TO 520KG) HEAT 3

PRIZE: 1ST \$25, 2ND \$15, 3RD \$10, SASH

2	117	Black Diamond Speckle Parks: (SPXAA), Bred By: Black Diamond Speckle Parks , 11 Jul 2022, Sire: Black Diamond Pressure Point P214
4	144	Glental Simmentals: (SB), 23 Aug 2022, Sire: Woonallee Phantom, Dam: Glental Poppy P02
6	154	Gundagai High School: (AAXAA/GA), Bred By: D A Chadwick, 17 Jun 2022, Sire: Bongongo NGXP805
5	178	Longerenong Agricultural College: (RA), 12 Aug 2022, Dam: Q11
1	213	Rutherglen High School: (LL), Bred By: Le Martres Limousin Stud (Leon Martin), 6 Sep 2022, Sire: Lempr62, Dam: Lempp104

2023 Melbourne Royal Beef Carcase Competition Results

3 243 **Naracoorte High School** : (LL), Bred By: Spence's Show Steers, 27 Oct 2022, Sire: Summit Drover P54, Dam: Mandayen Very Special H2136

LEDC04 - LED HEAVY DOMESTIC (450.1KG TO 520KG) HEAT 4

PRIZE: 1ST \$25, 2ND \$15, 3RD \$10, SASH

2 119 **Black Diamond Speckle Parks**: (SPXAA), Bred By: Black Diamond Speckle Parks , 20 Jul 2022, Sire: Black Diamond Pressure Point
 6 124 **Jennifer Ellis**: (RP), Bred By: GM &KJ Abbott, 16 May 2022, Sire: Oakwood Round Table, Dam: Turanga Starseeker
 5 191 **Meadow Vale Australian Shorthorns**: (AS), 14 Sep 2022, Sire: Meadow Vale Sambar, Dam: Meadow Vale Marguerite L15
 1 199 **North Ulandi**: (LL), Bred By: Limek Limousins, 8 Aug 2022, Sire: Limek Potent, Dam: Limek Pleur
 4 223 **St Pauls College**: (AA), 10 Oct 2022
 3 225 **St Pauls College**: (AA), 12 Oct 2022

LEDC05 - LED HEAVY DOMESTIC (450.1KG TO 520KG) HEAT 5

PRIZE: 1ST \$25, 2ND \$15, 3RD \$10, SASH

6 107 **Billabong High School**: (LL), Bred By: Mrs Margaret Pierce, 21 Mar 2022, Sire: Garren Park Luther, Dam: Belango Park Commercial Cow
 5 125 **Jennifer Ellis**: (SIXRP), Bred By: Tiraslea Simmentals and Red Polls, 5 Aug 2022, Sire: Worbete Perth, Dam: Oakwood Gem
 2 127 **Finley High School**: (AA), Bred By: Andrew & Kirstie Chesworth, Willette , 8 Aug 2022
 4 155 **Hogan Family**: (MG), 10 Apr 2022, Sire: Thologolong Elation, Dam: Wattledene Delilah
 1 164 **Jacob Kerrisk / Shaw's Livestock**: (LL), Bred By: Flemington , 5 Aug 2022, Sire: Flemington Ready To Roll R20, Dam: Flemington Honky Tonk P49
 3 246 **Ballarat Grammar**: (HH), Bred By: Yarram Park Herefords, 6 May 2022

LEDD01 - LED EXPORT (520.1KG AND OVER) HEAT 1

Eligible Classes: 1

PRIZE: 1ST \$25, 2ND \$15, 3RD \$10, SASH

5 111 **Billabong High School**: (SI), Bred By: Brewer Beef, 29 Jun 2022, Sire: LCS Photogenic P355, Dam: Brewer beef Cow
 3 114 **Black Diamond Speckle Parks**: (SP), Bred By: Black Diamond Speckle Parks , 19 Apr 2022, Sire: Underhill All Out 1D, Dam: Starbank Reba H17
 6 180 **Longerenong Agricultural College**: (RA), 8 Aug 2022, Dam: L11
 2 197 **North Ulandi**: (AAXLL), Bred By: North Ulandi, 30 Jul 2022, Dam: Maryvale Roxy R34
 1 205 **Rigdale Limousin**: (LL), 3 Oct 2022, Sire: Rigdale Reckless R8
 4 216 **Salesian College Sunbury**: (SI), 1 Oct 2022

LEDD02 - LED EXPORT (520.1KG AND OVER) HEAT 2

PRIZE: 1ST \$25, 2ND \$15, 3RD \$10, SASH

1 162 **Jones Farms**: (AAXAABS), 21 Mar 2022, Sire: Square B True North 8052 Usa19405246, Dam: Jones Farms Q69
 3 163 **Jones Farms**: (SBXAABS), 21 Mar 2022, Sire: Lfe Black Lakota 385W Imcpe385, Dam: Jones Farms Willcoola H150
 6 182 **Longerenong Agricultural College**: (SS), Bred By: DS & HJ Brook Eloora Shorthorns, 1 Jun 2022, Dam: Db
 5 186 **Longerenong Agricultural College**: (XSXRA), 12 Aug 2022, Dam: L30
 2 215 **Salesian College Sunbury**: (SI), 1 Aug 2022

4 226 **St Pauls College**: (AA), 15 Sep 2022

LEDD03 - LED EXPORT (520.1KG AND OVER) HEAT 3

PRIZE: 1ST \$25, 2ND \$15, 3RD \$10, SASH

6 135 **Finley High School**: (SS), 12 Jul 2022, Sire: Sprys Grandslam Q23, Dam: Yarram Virginia H27
 5 145 **Grant High School**: (AA), Bred By: G & E Glasgow, 20 May 2022, Sire: Claremont Blacks R016, Dam: Claremont Blacks Jill
 2 165 **Limitless Cattle Co** : (LLXCC), 17 Jun 2022, Sire: Jaemac King Q33, Dam: Arabar Livie
 3 167 **Limitless Cattle Co** : (SIXAABS), 10 May 2022, Sire: MRL Missile 138C, Dam: Limitless Black Magic R022
 1 231 **The Riverina Anglican College**: (LLXAA), Bred By: Raydon Park Limousin Stud, 8 Jun 2022, Sire: Raydon Park Qashqai, Dam: Raydon Park Ella
 4 242 **Naracoorte High School** : (HHXHH/AA), Bred By: Days Whiteface , 25 Aug 2022, Sire: Days Hallmark P176, Dam: Days Gemma

LEDD04 - LED EXPORT (520.1KG AND OVER) HEAT 4

PRIZE: 1ST \$25, 2ND \$15, 3RD \$10, SASH

1 148 **Grant High School**: (SIXSI/HH), Bred By: G & V Muller, 4 Mar 2022, Sire: Tennysonvale Nitrate, Dam: Rellum Farms YN200
 3 174 **Longerenong Agricultural College**: (BAXSS), 17 Aug 2022, Dam: 419
 5 214 **Salesian College Sunbury**: (SI), 1 Aug 2022
 4 222 **St Pauls College**: (AA), 1 Oct 2022
 6 230 **The Riverina Anglican College**: (CC), Bred By: Woongarra Livestock, 1 Jun 2022
 2 232 **The Riverina Anglican College**: (RAXSI), Bred By: Mavstar Simmentals, 12 May 2022, Sire: Mavstar Red Bear, Dam: Mavstar Lady Dakota

LEDD05 - LED EXPORT (520.1KG AND OVER) HEAT 5

PRIZE: 1ST \$25, 2ND \$15, 3RD \$10, SASH

3 116 **Black Diamond Speckle Parks**: (SP), Bred By: Black Diamond Speckle Parks, 4 Mar 2022, Sire: Mt Eccles Meteorite K21, Dam: Black Diamond 1D Protege P312
 4 137 **Finley High School**: (SS), 18 Apr 2022, Sire: Polldale Packer, Dam: FHS Quaint
 5 146 **Grant High School**: (LL), Bred By: M Black, 24 Mar 2022, Sire: Macorna Paramount, Dam: Nelshaby J49
 1 166 **Limitless Cattle Co** : (SIXAA), Bred By: BoonARKM Angus , 22 Apr 2022, Sire: Woonallee N514, Dam: Boonarkm B3 Dream P570
 6 196 **Naracoorte High School** : (AA), Bred By: JB Angus , 12 May 2022, Sire: Coonamble Prospect P372, Dam: Old Kentucky Royal-Line H33
 2 209 **Rutherglen High School**: (AAXAA/SI), Bred By: Swan Lagoon Ag, 17 Apr 2022

SPECIAL

LED10S - BEST MAINTAINED TEAM

Awarded by the Melbourne Royal Beef Cattle Committee to the Best Maintained Team (Non School Exhibitor or College). This award recognises and rewards the presentation of the cattle display to the general public.

PRIZE: 1ST WALL PLAQUE

1 Limitless Cattle Co

2023 Melbourne Royal Beef Carcase Competition Results

School and College Awards

Most Successful Schools or College Exhibitor – Bott Burston Trophy

Grant High School

Place	Exhibitor Name
1	Grant High School
2	Finley High School
3	St Pauls College
	Naracoorte High School
	Wagga Wagga Christian College
	Billabong High School
	Gundagai High School

Place	Exhibitor Name
	Longerenong Agricultural College
	Salesian College Sunbury
	The Riverina Anglican College
	Rutherglen High School
	Lauchlan Malcom
	Trinity College
	Ballarat

Champion School and College Steer or Heifer

148 Grant High School: (SIXSI/HH), Bred By: G & V Muller, 4 Mar 2022, Sire: Tennysonvale Nitrate, Dam: Rellum Farms YN200

Reserve Champion Schools and College Steer or Heifer

131 Finley High School: (CCXSP), Bred By: Jack Nelson, 2 Sep 2022

Best Maintained Schools or College Exhibitor

St Pauls College

2023 Melbourne Royal Beef Carcase Competition Results

SCHOOL & COLLEGE

Exhibitors are required to nominate an Ordinary Class Heat based on the age of the Parader.

ORDINARY

JUNIOR

SCH-H1 - PARADERS HEAT 1, 12 YEARS AND UNDER

Parader born on or before 22 Sep 2010

Eligible Classes: SCH1

4	1002	Allira Oehm: School/College: Billabong High School
2	1022	Addie Baker: School/College: Finley High School
5	1046	Lucy Mueller: School/College: Finley High School
6	1066	Joel Sharman: School/College: Gundagai High School
1	1067	Khyla Warren: School/College: Gundagai High School
3	1096	Axel Miller: (AS), 22 Nov 2022, Sire: Roly Park Renegade, Dam: Roly Park Roan, School/College: Roly Park Shorthorns

SCH-H2 - PARADERS HEAT 2, 12 YEARS AND UNDER

Parader born on or before 22 Sep 2010

Eligible Classes: SCH1

3	1013	Ned Dodds: School/College: Billabong High School
1	1038	James White: School/College: Finley High School
4	1097	Seth Miller: (AS), 27 Apr 2022, Sire: Roly Park Rambo, Dam: Roly Park Porsha, School/College: Roly Park Shorthorns
2	1127	Ryan Smith: School/College: St Pauls College
5	1148	Holly Peel: School/College: Wagga Wagga Christian College
6	1149	Jemina Touzel: School/College: Wagga Wagga Christian College

SCH-H3 - PARADERS HEAT 3, 13 TO 14 YEARS

Parader born on or between 22 Sep 2008 and 21 Sep 2010

Eligible Classes: SCH1

4	1018	Sophie Lieschke: School/College: Billabong High School
5	1019	Thomas MacLagan: School/College: Billabong High School
3	1063	Clayton Elliott: School/College: Gundagai High School
1	1105	Jasmine Hall: School/College: Salesian College Sunbury
2	1160	Thomas Shepherd: School/College: Grant High School

SCH-H4 - PARADERS HEAT 4, 13 TO 14 YEARS

Parader born on or between 22 Sep 2008 and 21 Sep 2010

Eligible Classes: SCH1

3	1014	Neve Scholz: School/College: Billabong High School
5	1043	Lillianna Meyervale: School/College: Finley High School
4	1044	Lilly McNamara: School/College: Finley High School
2	1099	Archie Edwards: School/College: Salesian College Sunbury
6	1119	Jessica Baker: School/College: St Pauls College
1	1143	Oscar Nugent: School/College: Wagga Wagga Christian College

SCH-H5 - PARADERS HEAT 5, 13 TO 14 YEARS

Parader born on or between 22 Sep 2008 and 21 Sep 2010

Eligible Classes: SCH1

6	1051	Nick Chesworth: School/College: Finley High School
3	1053	Ruby McFarlane: School/College: Finley High School
2	1058	William Frost: School/College: Finley High School
5	1112	George McCrohon: School/College: St Pauls College
1	1116	Henry Brewer: School/College: St Pauls College
4	1125	Rosie Rawson: School/College: St Pauls College

SCH-H6 - PARADERS HEAT 6, 13 TO 14 YEARS

Parader born on or between 22 Sep 2008 and 21 Sep 2010

Eligible Classes: SCH1

6	1012	Meadow Wright: School/College: Billabong High School
3	1015	Olivia Wiffen: School/College: Billabong High School
1	1042	Lillian Baker: School/College: Finley High School
4	1048	Matilda Burton: School/College: Finley High School
5	1054	Ryan Bauer: School/College: Finley High School
2	1158	Jackson Bald: School/College: Grant High School

SCH1S - JUNIOR CHAMPION SCHOOLS AND COLLEGE STEER OR HEIFER PARADER

Eligible Classes: SCH-H1 - SCH-H7

PRIZE: 1ST SASH

1116 Henry Brewer: School/College: St Pauls College

SCH2S - RESERVE JUNIOR CHAMPION SCHOOLS AND COLLEGE STEER OR HEIFER PARADER

Eligible Classes: SCH1S

PRIZE: 1ST SASH

1105 Jasmine Hall: School/College: Salesian College Sunbury

INTERMEDIATE

SCH-H8 - PARADERS HEAT 8, 15 TO 16 YEARS

Parader born on or between 22 Sep 2006 and 21 Sep 2008

Eligible Classes: SCH1

SCH-H9 - PARADERS HEAT 9, 15 TO 16 YEARS

Parader born on or between 22 Sep 2006 and 21 Sep 2008

Eligible Classes: SCH1

1	1005	Colbie Lloyd-Wilson: School/College: Billabong High School
2	1035	Erin Chesworth: School/College: Finley High School
3	1050	Nevaeh Webb: School/College: Finley High School
6	1132	Nat Huf: School/College: Ballarat Grammar
4	1161	Isabelle Jones: School/College: Grant High School
5	1183	Annie Johnson: School/College: Rutherglen High School

SCH-H10 - PARADERS HEAT 10, 15 TO 16 YEARS

Parader born on or between 22 Sep 2006 and 21 Sep 2008

Eligible Classes: SCH1

3	1027	Chelsea Singleton: School/College: Finley High School
6	1036	Gemma Wise: School/College: Finley High School
5	1059	Charlotte Bate: School/College: Geelong Grammar
1	1071	Sam Sharman: School/College: Gundagai High School
2	1124	Oscar Feuerherdt: School/College: St Pauls College
4	1156	Skye Wilson: School/College: Grant High School

2023 Melbourne Royal Beef Carcase Competition Results

SCH-H11 - PARADERS HEAT 11, 15 TO 16 YEARS

Parader born on or between 22 Sep 2006 and 21 Sep 2008

Eligible Classes: SCH1

2	1011	Matt Kirkby: School/College: Billabong High School
4	1026	Charlotte Rafferty: School/College: Finley High School
6	1045	Lindsey Matheson: School/College: Finley High School
1	1113	Georgie Anderson: School/College: St Pauls College
3	1164	Felicity Kelly: School/College: Grant High School
5	1169	Georgie Kelly: School/College: Rutherglen High School

SCH-H12 - PARADERS HEAT 12, 15 TO 16 YEARS

Parader born on or between 22 Sep 2006 and 21 Sep 2008

Eligible Classes: SCH1

4	1028	Cheyenne Tucker: School/College: Finley High School
5	1029	Claire Ingram: School/College: Finley High School
2	1037	Hayley Kernaghan: School/College: Finley High School
3	1047	Maggie Bramley: School/College: Finley High School
1	1162	Amelia Frick: School/College: Naracoorte High School
6	1163	Shania Whitehead: School/College: Grant High School

SCH-H13 - PARADERS HEAT 13, 15 TO 16 YEARS

Parader born on or between 22 Sep 2006 and 21 Sep 2008

Eligible Classes: SCH1

5	1049	Nathan Brown: School/College: Finley High School
2	1101	Chanel Jury: School/College: Salesian College Sunbury
6	1121	Lily Spice: School/College: St Pauls College
1	1122	Lucy Adams: School/College: St Pauls College
3	1165	Xavier Rothe: School/College: Naracoorte High School
4	1184	Rachel Palk: School/College: Jacqui Palk

SCH3S - INTERMEDIATE CHAMPION SCHOOLS AND COLLEGE STEER OR HEIFER PARADER

Eligible Classes: SCH-H8 - SCH-H14

PRIZE: 1ST SASH

1162	Amelia Frick: School/College: Naracoorte High School
------	--

SCH4S - RESERVE INTERMEDIATE CHAMPION SCHOOLS AND COLLEGE STEER OR HEIFER PARADER

Eligible Classes: SCH3S

PRIZE: 1ST SASH

1037	Hayley Kernaghan: School/College: Finley High School
------	--

SENIOR

SCH-H15 - PARADERS HEAT 15, 17 TO 18 YEARS

Parader born on or between 22 Sep 2004 and 21 Sep 2006

Eligible Classes: SCH1

4	1023	Amanda Stevenson: School/College: Finley High School
3	1075	Alexandra Page: School/College: Longerenong Agricultural College
5	1145	Ned Bergmeie: School/College: Wagga Wagga Christian College

1	1155	Hamish McLaughlan: School/College: Naracoorte High School
6	1167	Jessi Davis: School/College: Rutherglen High School
2	1175	Ryan Bald: School/College: Grant High School

SCH-H16 - PARADERS HEAT 16, 17 TO 18 YEARS

Parader born on or between 22 Sep 2004 and 21 Sep 2006

Eligible Classes: SCH1

5	1032	Dakota Pyle: School/College: Finley High School
3	1057	Tamzin Bell: School/College: Finley High School
6	1080	Bridget Carney: School/College: Longerenong Agricultural College
4	1094	Ted Davidson: School/College: Longerenong Agricultural College
1	1150	Jemima Nugent: School/College: Wagga Wagga Christian College
2	1153	Jacob Lawrie: School/College: Naracoorte High School

SCH-H17 - PARADERS HEAT 17, 17 TO 18 YEARS

Parader born on or between 22 Sep 2004 and 21 Sep 2006

Eligible Classes: SCH1

3	1082	Charlotte Eaton: School/College: Longerenong Agricultural College
5	1098	Aaron Mills: School/College: Salesian College Sunbury
2	1109	Zac Jones: School/College: Salesian College Sunbury
1	1111	Elli Lowry: School/College: St Pauls College
4	1136	Kaitlyn Widdup: School/College: Lockhart Central School
6	1176	Nikita Larsen: School/College: Rutherglen High School

SCH-H18 - PARADERS HEAT 18, 17 TO 18 YEARS

Parader born on or between 22 Sep 2004 and 21 Sep 2006

Eligible Classes: SCH1

3	1039	Jebidiah MeyerVale: School/College: Finley High School
4	1079	Bonnie Lunn: School/College: Longerenong Agricultural College
6	1085	Finely Wagstaff: School/College: Longerenong Agricultural College
2	1159	Matilza Rothe: School/College: Naracoorte High School
5	1173	Summer Buckmaster: School/College: Grant High School
1	1187	Lauchlan Malcom: School/College: Lauchlan Malcom

SCH-H19 - PARADERS HEAT 19, 19 YEARS AND OVER

Parader born before 21 Sep 2004

Eligible Classes: SCH1

5	1077	Anastasia Rea: School/College: Longerenong Agricultural College
6	1078	Asher Whitehand: School/College: Longerenong Agricultural College
2	1081	Charlotte Cain: School/College: Longerenong Agricultural College
3	1083	Chelsea Prout: School/College: Longerenong Agricultural College
4	1104	Isabella Slavik: School/College: Salesian College Sunbury
1	1129	Charlotte Dendy: (RAXSI), Bred By: Mavstar Simmentals, 12 May 2022, Sire: Mavstar Red Bear, Dam: Mavstar Lady Dakota, School/College: The Riverina Anglican College

2023 Melbourne Royal Beef Carcase Competition Results

SCH-H20 - PARADERS HEAT 20, 19 YEARS AND OVER

Parader born before 21 Sep 2004

Eligible Classes: SCH1

5	1074	Abbey Benson : School/College: Longerenong Agricultural College
1	1084	Ella McKinnon : School/College: Longerenong Agricultural College
3	1087	Kiara Radke : School/College: Longerenong Agricultural College
6	1088	Lilly Perkins : School/College: Longerenong Agricultural College
4	1092	Rachel Duggan : School/College: Longerenong Agricultural College
2	1093	Steven Cunningham : School/College: Longerenong Agricultural College

SCH5S - SENIOR CHAMPION SCHOOLS AND COLLEGE STEER OR HEIFER PARADER

Eligible Classes: SCH-H15 - SCH-H21

PRIZE: 1ST SASH

1150	Jemima Nugent : School/College: Wagga Wagga Christian College
------	---

SCH6S - RESERVE SENIOR CHAMPION SCHOOLS AND COLLEGE STEER OR HEIFER PARADER

Eligible Classes: SCH5S

PRIZE: 1ST SASH

1155	Hamish McLauchlan : School/College: Naracoorte High School
------	--

2023 Melbourne Royal Beef Carcase Competition Results

Carcase Champion Awards

Grand Champion Steer or Heifer	
145	Grant High School: (AA), Bred By: G & E Glasgow, 20 May 2022, Sire: Claremont Blacks R016, Dam: Claremont Blacks Jill
Champion Domestic Steer or Heifer	
149	Grant High School: (SPXLL), Bred By: T & M Bowering, 24 Nov 2022, Sire: Waratah Proactive, Dam: Weopa Lilly
Champion Heavy Domestic Steer or Heifer	
138	Finley High School: (SS), 27 Sep 2022, Sire: FHS Ron, Dam: FHS Kate
Champion Export Steer or Heifer	
145	Grant High School: (AA), Bred By: G & E Glasgow, 20 May 2022, Sire: Claremont Blacks R016, Dam: Claremont Blacks Jill
Champion Schools Carcase – The Marcus Oldham College Trophy	
145	Grant High School: (AA), Bred By: G & E Glasgow, 20 May 2022, Sire: Claremont Blacks R016, Dam: Claremont Blacks Jill
Highest Scoring School Bred and Prepared Carcase - The Melbourne Polytechnic Trophy	
138	Finley High School: (SS), 27 Sep 2022, Sire: FHS Ron, Dam: FHS Kate

Steer Bonanza

Place	Exhibit		Prize
1	159	Jackungah Speckle Park: (CCXMG), Bred By: Venturon Livestock, 14 Aug 2022, Sire: Venturon New Generation, Dam: Venturon Murray Grey	\$650
2	231	The Riverina Anglican College: (LLXAA), Bred By: Raydon Park Limousin Stud, 8 Jun 2022, Sire: Raydon Park Qashqai, Dam: Raydon Park Ella	\$390
3	161	Jackungah Speckle Park: (SP), 2 Aug 2022, Sire: River Hill Traffic Jam 26T, Dam: Tumbleweed Acres Daisy 10X	\$260

2023 Melbourne Royal Beef Carcase Competition Results

CARCASE

ORDINARY

CARB - CARCASE DOMESTIC (350KG TO 450KG)

Eligible Classes: 1

PRIZE: 1ST \$300, 2ND \$150, 3RD \$50

3	118	Black Diamond Speckle Parks: (SPXAA), Bred By: Black Diamond Speckle Parks , 20 Aug 2022, Sire: Black Diamond Pressure Point P214
1	149	Grant High School: (SPXLL), Bred By: T & M Bowering, 24 Nov 2022, Sire: Waratah Proactive, Dam: Weopa Lilly
2	168	Lochclyde Pastoral Co: (AAXSI), 10 Aug 2022, Sire: J & C Jester, Dam: Arabar Commercial Simmental
5	185	Longerenong Agricultural College: (SS), Bred By: McKay Bros Shorthorn, 1 Sep 2022, Dam: Rb
4	189	Malton Shorthorns Falls Family: (AS), Bred By: Falls Family, 20 Aug 2022, Sire: Bayview Unique K11, Dam: Malton Shorthorn cow

CARC - CARCASE HEAVY DOMESTIC (450.1KG TO 520KG)

Eligible Classes: 1

PRIZE: 1ST \$300, 2ND \$150, 3RD \$50

4	119	Black Diamond Speckle Parks: (SPXAA), Bred By: Black Diamond Speckle Parks , 20 Jul 2022, Sire: Black Diamond Pressure Point
1	138	Finley High School: (SS), 27 Sep 2022, Sire: FHS Ron, Dam: FHS Kate
2	144	Giental Simmentals: (SB), 23 Aug 2022, Sire: Woonallee Phantom, Dam: Giental Poppy P02
5	199	North Ulandi: (LL), Bred By: Limek Limousins, 8 Aug 2022, Sire: Limek Potent, Dam: Limek Pleur
3	224	St Pauls College: (AA), 11 Oct 2022

CARD - CARCASE EXPORT (520.1KG AND OVER)

Eligible Classes: 1

PRIZE: 1ST \$300, 2ND \$150, 3RD \$50

3	137	Finley High School: (SS), 18 Apr 2022, Sire: Polldale Packer, Dam: FHS Quaint
1	145	Grant High School: (AA), Bred By: G & E Glasgow, 20 May 2022, Sire: Claremont Blacks R016, Dam: Claremont Blacks Jill
2	166	Limitless Cattle Co : (SIXAA), Bred By: BoonARKM Angus , 22 Apr 2022, Sire: Woonallee N514, Dam: Boonarkm B3 Dream P570
5	182	Longerenong Agricultural College: (SS), Bred By: DS & HJ Brook Eloora Shorthorns, 1 Jun 2022, Dam: Db
4	231	The Riverina Anglican College: (LLXAA), Bred By: Raydon Park Limousin Stud, 8 Jun 2022, Sire: Raydon Park Qashqai, Dam: Raydon Park Ella

2023 Melbourne Royal Beef Carcase Competition Results

The Borthwick Trophy

AWARDED TO LIMOUSIN

Exhibit	
164	Jacob Kerrisk / Shaw's Livestock: (LL), Bred By: Flemington , 5 Aug 2022, Sire: Flemington Ready To Roll R20, Dam: Flemington Honky Tonk P49
199	North Ulandi: (LL), Bred By: Limek Limousins, 8 Aug 2022, Sire: Limek Potent, Dam: Limek Pleur
213	Rutherglen High School: (LL), Bred By: Le Martres Limousin Stud (Leon Martin), 6 Sep 2022, Sire: Lempr62, Dam: Lempp104

Place	Breed	Exhibit number			Live Total	Exhibit number			Carcase Total	Grand Total
		1	2	3		1	2	3		
1	Limousin	164	199	213	90	87.68	88.38	85.99	262.05	352.05
2	Simmental	144	214	215	93	89.61	79.3	82.0	250.95	343.95
3	Shorthorn	181	182	183	85	83.3	86.8	81.59	251.7	336.7
4	Angus	128	145	196	86	76.84	76.84	76.84	248.72	334.72
5	Murray Grey	147	155	177	83	83.13	84.04	81.49	248.66	331.66
6	Australian Shorthorn	190	192	208	83	81.36	79.89	82.86	244.11	327.11
7	Speckle Park	114	116	161	81	74.6	80.5	87.71	242.9	323.9
8	Red Poll	122	123	124	74	79.56	82.21	85.51	247.28	321.28
9	Red Angus	178	179	180	87	77.5	76.2	75.0	228.76	315.76
10	Hereford	106	132	244	78	85.05	80.44	65.4	230.87	308.87
11	Fleckvieh	234	236	237	65	23.75	68.82	60.19	152.76	217.76

Carcase Results – Class 1 Domestic 350 – 450kg (190 to 250)

Exh	Name	Live Weight	Breed	HSCW	Pnlty. Pts	Hump	Oss.	MSA Mb	AUS Mb	pH	MSA Index	/45	RFT (mm)	Rib Point /15	P8 Fat	P8 Point /10	Fat Dist. Point /0	MC (1A-7)	MC Point /5	/35	EMA (cm2)	EMA Points /20	/100	Place
149	Grant High School	434	SPXLL	244		60	110	400	2	5.57	59.49	37.18	5	15	10	10	4	2	4	33	68	17	87.18	1
168	Lochclyde Pastoral Co	402	AAXSI	215.5		50	110	310	1	5.59	58.5	36.56	8	15	11	10	5	2	4	34	65	16.25	86.81	2
118	Black Diamond Speckle Parks	442	SPXAA	267		60	120	300	1	5.58	56.78	35.49	5	15	7	10	3	2	4	32	72	18	85.49	3
189	Malton Shorthorns Falls Family	439	AS	244		50	100	250	0	5.59	58.56	36.6	6	15	10	10	4	2	4	33	60	15	84.6	4
185	Longerenong Agricultural College	444	SS	260		60	120	310	1	5.53	57.41	35.88	8	15	10	10	5	2	4	34	58	14.5	84.38	5
133	Finley High School	450	OOXSS	269		60	140	400	2	5.59	57	35.63	7	15	13	6	3	2	4	28	80	20	83.63	6
221	S&K Agricultural Services	379	SQ	204		55	150	350	1	5.53	54.75	34.22	5	15	7	10	3	2	4	32	65	16.25	82.47	7
184	Longerenong Agricultural College	439	SS	261		55	140	280	0	5.57	54.67	34.17	5	15	8	10	3	2	4	32	65	16.25	82.42	8
183	Longerenong Agricultural College	397	SS	221.5		55	150	380	1	5.54	55.35	34.59	5	15	10	10	3	2	4	32	60	15	81.59	9
139	Finley High School	448	SS	251.5		60	140	300	1	5.52	55.3	34.56	7	15	10	10	4	3	3	32	60	15	81.56	10
177	Longerenong Agricultural College	436	MG	249.5		60	110	320	1	5.54	58.38	36.49	6	15	6	10	2	3	3	30	60	15	81.49	11
142	Geelong Grammar	380	MG	212.5		60	110	230	0	5.63	56.72	35.45	5	15	6	10	3	3	3	31	60	15	81.45	12
132	Finley High School	390	HH	217.5		60	140	320	1	5.57	55.11	34.44	5	15	7	10	3	3	3	31	60	15	80.44	13
122	M. R. Draper & G. Ward	441	RP	251.5		55	140	310	1	5.54	55.3	34.56	6	15	7	10	3	2	4	32	52	13	79.56	14
198	North Ulandi	437	LL	259.5		50	110	110	0	5.54	54.79	34.24	5	15	8	10	3	2	4	32	52	13	79.24	15
158	Jackungah Speckle Park	441	AAXCC	250.5		60	150	300	1	5.57	54.83	34.27	9	13	5	9	2	2	4	28	67	16.75	79.02	16
206	Roly Park Shorthorns	385	AS	220		50	100	310	1	5.54	59.86	37.41	8	15	3	5	3	2	4	27	52	13	77.41	17
128	Finley High School	449	AA	244		50	150	360	1	5.59	55.35	34.59	6	15	14	4	3	2	4	26	65	16.25	76.84	18
201	North Ulandi	446	LLXAA	275.5		80	150	310	1	5.54	54.33	33.96	6	15	13	6	2	2	4	27	61	15.25	76.21	19
233	Trinity College	382	SQ	210		50	110	260	0	5.53	56.69	35.43	3	8	3	5	2	2	4	19	68	17	71.43	20
131	Finley High School	448	CCXSP	258		50	110	300	1	5.43	57.35	35.84	3	8	3	5	2	2	4	19	65	16.25	71.09	21
170	Lockhart Central School	383	LL	218		55	100	300	1	5.53	58.7	36.69	3	8	3	5	2	2	4	19	60	15	70.69	22
130	Finley High School	391	CCXSP	215.5		50	100	260	0	5.57	58.05	36.28	3	8	3	5	2	2	4	19	60	15	70.28	23
143	Geelong Grammar	412	MG	214.5		50	110	300	1	5.58	57.34	35.84	3	8	3	5	2	2	4	19	60	15	69.84	24
141	Geelong Grammar	427	MG	243		50	120	290	0	5.53	56.05	35.03	3	8	3	5	2	2	4	19	60	15	69.03	25
200	North Ulandi	430	LL	253.5		60	170	110	0	5.54	49.48	30.92	3	8	3	5	2	2	4	19	65	16.25	66.17	26
247	Riverton & District High School	350	AL	184	6	50	140	310	1	5.53	54.98	34.36	6	15	14	4	2	2	4	25	50	12.5	65.86	27
126	Erin Ferguson	442	CC	248		50	100	260	0	5.47		0	1	0	1	0	1	2	4	5	80	20	25	28
104	Arabar Livestock	375	LLXAA	194.5		55	100	300	1	5.59		0	2	0	3	5	1	2	4	10	60	15	25	29
234	Wagga Wagga Christian College	402	FL	223.5		55	100	250	0	5.53		0	1	0	1	0	1	2	4	5	75	18.75	23.75	30
172	Lockhart Central School	388	LL	215		55	100	290	0	5.59		0	1	0	1	0	1	2	4	5	72	18	23	31
108	Billabong High School	409	LL	240		55	100	300	1	5.43		0	1	0	1	0	1	2	4	5	72	18	23	32
160	Jackungah Speckle Park	415	CCXSP	243		55	100	230	0	5.57		0	1	0	0	0	1	2	4	5	72	18	23	33
211	Rutherglen High School	430	LL	254.5		50	100	270	0	5.43		0	1	0	2	0	1	2	4	5	70	17.5	22.5	34
212	Rutherglen High School	403	LL	234		50	100	240	0	5.53		0	1	0	2	0	1	2	4	5	67	16.75	21.75	35
171	Lockhart Central School	425	LL	241.5		50	100	200	0	5.53		0	1	0	0	0	1	2	4	5	67	16.75	21.75	36
203	Pelican Rise Pty Ltd	350	LL	206.5		50	100	260	0	5.51		0	1	0	0	0	1	2	4	5	65	16.25	21.25	37
220	S&K Agricultural Services	356	SP	199.5		45	100	250	0	5.57		0	1	0	1	0	1	2	4	5	60	15	20	38
207	Roly Park Shorthorns	368	AS	206.5		50	100	230	0	5.53		0	1	0	1	0	1	2	4	5	60	15	20	39
235	Wagga Wagga Christian College	390	FL	215.5		55	100	260	0	5.57		0	1	0	1	0	1	3	3	4	62	15.5	19.5	40

Carcase Results – Class 2 Heavy Domestic 450.1 – 520kg (250.1 to 290)

Exh	Name	Live Weight	Breed	HSCW	Pnly. Pts	Hump	Oss.	MSA Mb	AUS Mb	pH	MSA Index	/45	RFT (mm)	Rib Point /15	P8 Fat	P8 Point /10	Fat Dist. Point /0	MC (1A-7)	MC Point /5	/35	EMA (cm2)	EMA Points /20	/100	Place
138	Finley High School	467	SS	263		60	100	600	4	5.43	64.26	40.16	8	15	12	10	5	2	4	34	65	16.25	90.41	1
144	Gental Simmentals	493	SB	277		70	100	580	3	5.57	63.38	39.61	5	15	12	10	3	2	4	32	72	18	89.61	2
224	St Pauls College	495	AA	275		60	110	560	3	5.59	62.19	38.87	6	15	9	10	4	2	4	33	70	17.5	89.37	3
119	Black Diamond Speckle Parks	504	SPXAA	297		60	120	300	1	5.56	57.72	36.08	6	15	8	10	5	2	4	34	75	18.75	88.83	4
199	North Ulandi	500	LL	308		60	150	290	0	5.59	55.01	34.38	6	15	8	10	5	2	4	34	85	20	88.38	5
159	Jackungah Speckle Park	460	CCXMG	276		60	140	320	1	5.42	55.58	34.74	6	15	10	10	4	2	4	33	90	20	87.74	6
161	Jackungah Speckle Park	473	SP	278		60	120	370	1	5.58	57.93	36.21	5	15	8	10	4	2	4	33	74	18.5	87.71	7
164	Jacob Kerrisk / Shaws Livestock	508	LL	300		60	110	250	0	5.56	57.08	35.68	5	15	10	10	3	2	4	32	80	20	87.68	8
243	Naracoorte High School	494	LL	284		60	100	320	1	5.45	60.26	37.66	5	15	7	9	4	2	4	32	70	17.5	87.16	9
103	Arabar Livestock	488	LLXAA	275		60	140	400	2	5.47	57.17	35.73	8	15	13	10	4	2	4	33	70	17.5	86.23	10
101	Brian Alford	457	CC	265		60	120	300	1	5.52	57.12	35.7	7	15	10	10	4	2	4	33	70	17.5	86.2	11
213	Rutherglen High School	488	LL	286		60	150	320	1	5.57	54.78	34.24	5	15	8	10	4	2	4	33	75	18.75	85.99	12
127	Finley High School	510	AA	281		60	120	400	2	5.58	58.77	36.73	7	15	11	10	4	2	4	33	65	16.25	85.98	13
107	Billabong High School	514	LL	286		55	150	330	1	5.57	54.94	34.34	5	15	8	10	4	2	4	33	74	18.5	85.84	14
117	Black Diamond Speckle Parks	491	SPXAA	286		65	140	490	2	5.53	58.55	36.59	7	15	13	10	3	2	4	32	68	17	85.59	15
124	Jennifer Ellis	514	RP	287		80	120	290	0	5.53	56.81	35.51	6	15	11	10	3	2	4	32	72	18	85.51	16
204	Rigdale Limousin	485	LL	303		60	120	300	1	5.59	57.54	35.96	5	15	8	10	4	2	4	33	65	16.25	85.21	17
106	Billabong High School	508	HH	283		60	120	300	1	5.59	57.28	35.8	8	15	10	10	5	3	3	33	65	16.25	85.05	18
134	Finley High School	467	OOXSS	276		60	120	290	0	5.56	56.63	35.39	5	15	11	10	3	2	4	32	70	17.5	84.89	19
155	Hogan Family	508	MG	279		60	150	280	0	5.54	54.47	34.04	5	15	10	10	3	2	4	32	72	18	84.04	20
187	Longerenong Agricultural College	467	XSXRA	256		60	110	320	1	5.51	58.39	36.49	6	15	10	10	4	2	4	33	58	14.5	83.99	21
191	Meadow Vale Australian Shorthorns	500	AS	266		60	120	300	1	5.57	56.96	35.6	6	15	13	10	3	3	3	31	67	16.75	83.35	22
125	Jennifer Ellis	466	SIXRP	268		60	140	300	1	5.56	56.03	35.02	8	15	8	10	4	3	3	32	65	16.25	83.27	23
140	Finley High School	470	SSXOO	267		55	140	300	1	5.53	56.25	35.16	10	15	14	8	4	2	4	31	68	17	83.16	24
147	Grant High School	475	MG	269		60	120	320	1	5.54	57.81	36.13	10	15	13	10	5	2	4	34	52	13	83.13	25
208	Roly Park Shorthorns	476	AS	284		60	140	280	0	5.58	54.97	34.36	6	15	12	10	2	2	4	31	70	17.5	82.86	26
245	Ballarat Grammar	514	HH	273		60	150	290	0	5.56	54.21	33.88	5	15	12	10	2	2	4	31	70	17.5	82.38	27
154	Gundagai High School	490	AAXAA/GA	268		60	150	210	0	5.54	53.36	33.35	8	15	8	10	5	2	4	34	60	15	82.35	28
123	M. R. Draper & G. Ward	453	RP	247	3	60	120	330	1	5.66	57.93	36.21	5	15	8	10	4	3	3	32	68	17	82.21	29
152	Gundagai High School	487	AA	265		55	140	390	1	5.58	57.18	35.74	6	15	12	10	3	3	3	31	60	15	81.74	30
225	St Pauls College	500	AA	269		60	150	290	0	5.59	54.76	34.23	6	15	10	10	3	2	4	32	62	15.5	81.73	31
246	Ballarat Grammar	512	HH	273		60	150	250	0	5.58	53.56	33.48	5	15	8	10	4	2	4	33	60	15	81.48	32
190	Malton Shorthorns Falls Family	498	AS	279		80	140	330	1	5.58	54.98	34.36	6	15	12	10	2	2	4	31	64	16	81.36	33
223	St Pauls College	506	AA	274		60	120	230	0	5.51	55.65	34.78	5	15	11	10	2	2	4	31	60	15	80.78	34
153	Gundagai High School	499	AA	283		60	150	340	1	5.56	55.08	34.43	5	15	10	10	3	3	3	31	60	15	80.43	35
151	Gundagai High School	508	AA	272		60	120	210	0	5.53	55.51	34.69	6	15	8	10	2	2	4	31	58	14.5	80.19	36

Carcase Results – Class 2 Heavy Domestic 450.1 – 520kg (250.1 to 290)

Exh	Name	Live Weight	Breed	HSCW	Pnlty. Pts	Hump	Oss.	MSA Mb	AUS Mb	pH	MSA Index	/45	RFT (mm)	Rib Point /15	P8 Fat	P8 Point /10	Fat Dist. Point /0	MC (1A-7)	MC Point /5	/35	EMA (cm2)	EMA Points /20	/100	Place
192	Meadow Vale Australian Shorthorns	469	AS	263		55	150	270	0	5.63	53.82	33.64	5	15	12	10	2	3	3	30	65	16.25	79.89	37
178	Longerenong Agricultural College	491	RA	278		60	120	320	1	5.53	57.6	36	8	15	15	6	3	2	4	28	54	13.5	77.5	38
176	Longerenong Agricultural College	502	HH	286		60	120	310	1	5.52	57.16	35.72	6	15	15	6	3	2	4	28	52	13	76.72	39
102	Arabar Livestock	460	LLXSI	240	10	60	150	300	1	5.5	54.35	33.97	6	15	9	10	4	2	4	33	67	16.75	73.72	40
175	Longerenong Agricultural College	483	BAXSS	283		60	120	360	1	5.6	57.78	36.11	5	15	18	0	2	3	3	20	70	17.5	73.61	41
236	Wagga Wagga Christian College	464	FL	261		55	110	300	1	5.51	58.11	36.32	3	7	3	0	2	2	4	13	78	19.5	68.82	42
156	Hogan Family	451	MG	247	3	55	100	230	0	5.51	57.53	35.96	3	7	3	0	2	2	4	13	60	15	60.96	43
237	Wagga Wagga Christian College	452	FL	243	7	55	110	260	0	5.53	56.7	35.44	3	7	3	0	2	2	4	13	75	18.75	60.19	44
113	Black Diamond Speckle Parks	464	LL	279		55	100	200	0	5.59		0	2	0	3	0	1	2	4	5	78	19.5	24.5	45

Carcase Results – Class 3 Export 520.1kg and over (290.1 - 400)

Exh	Name	Live Weight	Breed	HSCW	Pnlty. Pts	Hump	Oss.	MSA Mb	AUS Mb	pH	MSA Index	/45	RFT (mm)	Rib Point /15	P8 Fat	P8 Point /10	Fat Dist. Point /0	MC (1A-7)	MC Point /5	/35	EMA (cm2)	EMA Points /20	/100	Place
145	Grant High School	584	AA	319		60	100	530	3	5.52	63.51	39.69	10	15	12	10	5	2	4	34	72	18	91.69	1
166	Limitless Cattle Co	672	SIXAA	370		70	140	550	3	5.46	59.99	37.49	8	15	13	10	3	2	4	32	75	18.75	88.24	2
137	Finley High School	690	SS	364		70	140	400	2	5.45	57.46	35.91	7	15	10	10	3	2	4	32	88	20	87.91	3
231	The Riverina Anglican College	582	LLXAA	341		70	140	290	0	5.46	55.56	34.73	7	15	8	9	5	2	4	33	85	20	87.73	4
182	Longerenong Agricultural College	560	SS	314		70	150	600	4	5.44	59.72	37.33	8	15	13	10	3	2	4	32	70	17.5	86.83	5
226	St Pauls College	548	AA	295		60	150	380	1	5.5	56.15	35.09	7	15	10	10	4	2	4	33	74	18.5	86.59	6
165	Limitless Cattle Co	586	LLXCC	343		70	120	360	1	5.54	58.78	36.74	12	15	12	10	5	2	4	34	61	15.25	85.99	7
163	Jones Farms	552	SBXAAX BS	300		60	140	350	1	5.54	56.88	35.55	12	15	15	10	5	2	4	34	61	15.25	84.8	8
148	Grant High School	626	SIXSI/H H	353		65	140	390	1	5.54	57.79	36.12	12	15	11	10	4	2	4	33	61	15.25	84.37	9
136	Finley High School	650	SS	345		60	120	350	1	5.53	58.21	36.38	8	15	13	10	3	2	4	32	60	15	83.38	10
181	Longerenong Agricultural College	538	SS	310		55	150	320	1	5.55	55.63	34.77	10	15	12	10	5	2	4	34	58	14.5	83.27	11
222	St Pauls College	586	AA	310		55	140	320	1	5.53	56.36	35.23	11	15	13	10	5	2	4	34	53	13.25	82.48	12
129	Finley High School	568	AAXCC	320		80	150	540	3	5.52	58.19	36.37	6	11	14	10	2	2	4	27	75	18.75	82.12	13
215	Salesian College Sunbury	546	SI	298		70	120	290	0	5.42	56.84	35.53	6	11	12	10	2	2	4	27	78	19.5	82.03	14
150	Gundagai High School	532	AA	293		70	140	610	4	5.42	60.01	37.51	6	11	12	10	2	2	4	27	68	17	81.51	15
110	Billabong High School	666	SI	366		55	150	310	1	5.53	56.01	35.01	12	15	10	10	4	2	4	33	54	13.5	81.51	16
197	North Ulandi	526	AAXLL	301		55	150	310	1	5.53	55.41	34.63	10	15	8	9	4	2	4	32	58	14.5	81.13	17
162	Jones Farms	558	AAXAAX BS	319		70	150	400	2	5.58	56.76	35.48	8	15	17	6	3	2	4	28	70	17.5	80.98	18
232	The Riverina Anglican College	618	RAXSI	339		70	140	340	1	5.58	56.21	35.13	6	11	12	10	3	2	4	28	70	17.5	80.63	19
116	Black Diamond Speckle Parks	722	SP	406	6	70	120	370	1	5.53	58.87	36.79	10	15	14	10	4	2	4	33	67	16.75	80.54	20
196	Naracoorte High School	632	AA	342		60	150	430	2	5.5	57.1	35.69	6	11	10	10	2	2	4	27	70	17.5	80.19	21
111	Billabong High School	540	SI	287	3	55	150	320	1	5.51	55.13	34.46	7	15	8	9	5	2	4	33	62	15.5	79.96	22
214	Salesian College Sunbury	620	SI	330		60	140	360	1	5.59	56.49	35.31	6	11	11	10	2	2	4	27	68	17	79.31	23
167	Limitless Cattle Co	580	SIXAAX BS	311		60	120	360	1	5.55	58.54	36.59	10	15	17	6	2	2	4	27	61	15.25	78.84	24
230	The Riverina Anglican College	592	CC	334		70	120	310	1	5.52	57.54	35.96	8	15	17	6	2	2	4	27	61	15.25	78.21	25
210	Rutherglen High School	588	AS	319		70	120	360	1	5.54	58.03	36.27	6	11	10	10	2	2	4	27	58	14.5	77.77	26
112	Billabong High School	596	SI	326		70	120	310	1	5.53	57.23	35.77	6	11	13	10	2	2	4	27	60	15	77.77	27
205	Rigdale Limousin	536	LL	322		60	140	310	1	5.54	55.64	34.78	6	11	8	9	4	2	4	28	58	14.5	77.28	28
146	Grant High School	628	LL	374		55	120	290	0	5.53	57	35.63	6	11	6	5	1	2	4	21	98	20	76.63	29
179	Longerenong Agricultural College	578	RA	332		60	140	320	1	5.54	56.77	35.48	15	9	14	10	4	2	4	27	55	13.75	76.23	30
174	Longerenong Agricultural College	598	BAXSS	353		60	150	330	1	5.54	56.25	35.16	12	15	6	5	2	2	4	26	60	15	76.16	31
105	Ballarat Grammar	522	HH	284	6	60	150	300	1	5.57	55.04	34.4	9	15	13	10	4	3	3	32	60	15	75.4	32
180	Longerenong Agricultural College	526	RA	303		70	120	300	1	5.63	56.84	35.53	5	9	16	8	2	3	3	22	70	17.5	75.03	33

Carcase Results – Class 3 Export 520.1kg and over (290.1 - 400)

Exh	Name	Live Weight	Breed	HSCW	Pnlty. Pts	Hump	Oss.	MSA Mb	AUS Mb	pH	MSA Index	/45	RFT (mm)	Rib Point /15	P8 Fat	P8 Point /10	Fat Dist. Point /0	MC (1A-7)	MC Point /5	/35	EMA (cm2)	EMA Points /20	/100	Place
114	Black Diamond Speckle Parks	528	SP	307		60	150	300	1	5.53	54.59	34.12	5	9	7	7	3	2	4	23	70	17.5	74.62	34
135	Finley High School	582	SS	329		70	130	210	0	5.54	55.47	34.67	12	15	18	4	2	2	4	25	58	14.5	74.17	35
173	Longerenong Agricultural College	566	BAXRA	324		60	140	390	1	5.54	57.87	36.17	15	9	18	4	3	2	4	20	62	15.5	71.67	36
186	Longerenong Agricultural College	548	XSXRA	314		60	140	310	1	5.54	56.52	35.33	15	9	18	4	4	2	4	21	60	15	71.33	37
216	Salesian College Sunbury	528	SI	277	13	70	150	350	1	5.58	55.41	34.63	7	15	13	10	3	3	3	31	68	17	69.63	38
109	Billabong High School	578	SI	310		60	120	310	1	5.54	57.2	35.75	6	11	5	3	1	2	4	19	54	13.5	68.25	39
242	Naracoorte High School	572	HHXHH /AA	314		70	140	310	1	5.55	56.3	35.19	12	15	30	0	1	2	4	20	52	13	68.19	40
244	Ballarat Grammar	520	HH	280	10	60	140	320	1	5.59	55.41	34.63	5	9	13	10	2	3	3	24	67	16.75	65.38	41
209	Rutherglen High School	636	AAXAA/ SI	367		70	150	310	1	5.54	56.3	35.19	16	7	23	0	2	2	4	13	61	15.25	63.44	42

Exhibitor *List*

- A**
Alford Brian
Arthurs Creek VIC 3099: 1
Arabar Livestock
Balaklava SA 5461: 1
- B**
Bailey Charlotte
SCH1
Ballarat Grammar
Wendouree VIC 3355: 1, SCH1
Billabong High School
Culcairn NSW 2660: 1, SCH1
Black Diamond Speckle Parks
Macorna VIC 3579: 1
BrewerBeef t/as BrewAG P/L
Tallangatta Valley VIC 3701: 1
- D**
M. R. Draper & G. Ward
Arthurs Creek VIC 3099: 1
- E**
Ellis Jennifer
Macclesfield VIC 3782: 1
- F**
Ferguson Erin
Macorna VIC 3579: 1
Finley High School
Finley NSW 2713: 1, SCH1, BON01
- G**
Geelong Grammar
Corio VIC 3214: 1, SCH1
Glental Simmentals
Mallala SA 5502: 1
Grant High School
Mount Gambier SA 5290: 1, SCH1
Gundagai High School
Gundagai NSW 2722: 1, SCH1, BON01
- H**
Hogan Family
Myers Flat VIC 3556: 1, SCH1
- J**
Jackungah Speckle Park
Pine lodge VIC 3631: 1, BON01
Jones Farms
Moorooduc VIC 3933: 1, BON01
- K**
Jacob Kerrisk / Shaw's Livestock
Uranquinty NSW 2652: 1
- L**
Limitless Cattle Co
Mount Magnificent SA 5210: 1, BON01
Lochclyde Pastoral Co
Winchelsea VIC 3241: 1, BON01
Lockhart Central School
Lockhart NSW 2656: 1, SCH1
Longerenong Agricultural College
Dooen VIC 3401: 1, SCH1
- M**
Malcom Lauchlan
SCH1
Malton Shorthorns Falls Family
Finley NSW 2713: 1
Meadow Vale Australian Shorthorns
Riddells Creek VIC 3431: 1, BON01
Mulloon Pastoral Co
Mulloon NSW 2622: 1
Myers Angus
The Rock NSW 2655: 1
- N**
Naracoorte High School
Naracoorte SA 5271: 1, SCH1, BON01
North Ulandi
Marrabel SA 5413: 1, SCH1, BON01
- P**
Palk Jacqui
Eden Valley SA 5235: 1, SCH1
Pelican Rise Pty Ltd
Colac VIC 3250: 1
- R**
Rigdale Limousin
Loch VIC 3945: 1, BON01
Riverton & District High School
Marrabel SA 5413: 1
Roly Park Shorthorns
Lake Boga VIC 3584: 1, SCH1, BON01
Rutherglen High School
Rutherglen VIC 3685: 1, SCH1
- S**
Salesian College Sunbury
Sunbury VIC 3429: 1, SCH1
Seiler Brock
SCH1
S&K Agricultural Services
Eden Valley SA 5235: 1
St Pauls College
Walla Walla NSW 2659: 1, SCH1
- T**
The Riverina Anglican College
Boorooma NSW 2650: 1, SCH1, BON01
Trinity College
Evanston South SA 5116: 1
- W**
Wagga Wagga Christian College
Wagga Wagga NSW 2650: 1
SCH1

Melbourne Royal Beef Carcase Competition *Results Catalogue* 2023

Melbourne Royal® is a registered trademark of
The Royal Agricultural Society of Victoria Limited
ABN 66 006 728 785 ACN 006 728 785

Melbourne Showgrounds
Epsom Road, Ascot Vale 3032
www.melbourne.royal.com.au

List of Office Bearers	As at 9/8/2023
Patron	Her Excellency Professor the Honourable Margaret Gardner AC – Governor of Victoria
Board of Directors	MJ (Matthew) Coleman (President) Dr. CGV (Catherine) Ainsworth (Deputy President) D (Darrin) Grimsey NE (Noelene) King OAM PJB (Jason) Ronald OAM Dr. P (Peter) Hertan R (Robert) Millar T (Tina) Savona K (Kate) O’Sullivan
Chief Executive Officer	B. Jenkins
Company Secretary	D. Ferris
Committee	D. Bolton (Chair) J. McLauchlan S. Nelson D. Newcomen J Sharp C. Smith A. Snaith G. Turnham V. Wenn M Cooney (intern)
Competition Event Manager	Benjamin Cinque Email: cattle@melbourneroyal.com.au
Competitions Administrator	Taylor Blayney



MELBOURNE ROYAL BEEF CARCASS COMPETITION




Melbourne Royal is a member-based, not-for-profit organisation that has been proudly inspiring excellence in agriculture and food production since 1848, conducting a range of world-class events, awards and competitions each year.

Celebrating a remarkable 175 years in 2023, Melbourne Royal looks forward to celebrating agriculture, cultivating events and strengthening communities for many more generations to come.

For more information, visit melbourneroyal.com.au

Contact us

+61 3 9281 7444
info@melbourneroyal.com.au
melbourneroyal.com.au

 @Melbourne.Royal
 @Melbourne.Royal
 Melbourne Royal