

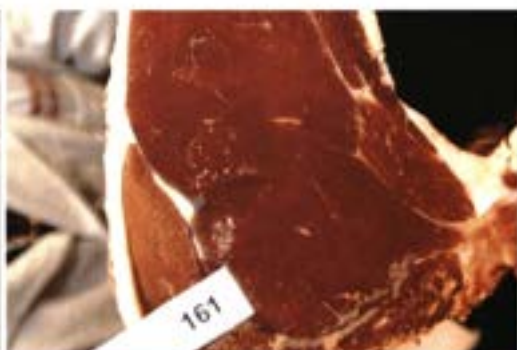


RASV

Royal Melbourne Show
22 September – 2 October 2012

BEEF CARCASS

Catalogue of Results







RASV

Royal Melbourne Show 22 September – 2 October 2012 **BEEF CARCASE** Catalogue of Results

The Royal Agricultural Society of Victoria Limited
ABN 66 006 728 785 ACN 006 728 785

Melbourne Showgrounds
Epsom Road

Ascot Vale VIC 3032
Telephone +61 3 9281 7444
Facsimile +61 3 9281 7592

www.rasv.com.au

List of Office Bearers	As at 16.08.12
Patron	The Hon Alex Chernov AC QC Governor of Victoria
Board of Directors	S.C. Spargo (Chair) D. Pollett Hodgson (Vice Chair) I.I. Bucknall D.S. Chapman M.J. Coleman A.J. Hawkes N.E. King OAM G.J. Phillips J.A. Potter P.J.B. Ronald OAM
President	S.C. Spargo
Vice President	D. Pollett Hodgson
Chief Executive Officer	M. O'Sullivan
Company Secretary	J. Perry
Organising Committee	N. King OAM (Chair) D. Bolton N. Branson B. Crotty M. Neal D. Newcomen A. Snaith D. Spencer F. Stephens G. Turnham
Competition Coordinator	Fiona Looker Telephone (03) 9281 7412 Email fiona.looker@rasv.com.au

2 BEEF CARCASE RESULTS

BEEF CARCASE COMPETITION

REGULATIONS OF BEEF CARCASE COMPETITION

1. The Regulations appearing in this Schedule form part of the General Regulations and conditions of entry to an Event at the Royal Melbourne Show. In the event of any inconsistency between the General Regulations and these Regulations, the General Regulations shall prevail to the extent of the inconsistency unless the General Regulations provide otherwise.

CLOSE OF ENTRIES

2. Entries in the Beef Carcase Competition must be received at RASV's Administration Office, located at Melbourne Showgrounds, Epsom Rd, Ascot Vale, 3032 by no later than 5:00pm on Friday 13 July 2012. Entry Forms must be accompanied by all fees at this time.

ENTRY FEES AND BEDDING FEES

3. Entry Fees for the Beef Carcase Competition (including auction cattle) are as follows:

Each Exhibit: \$55.00 (GST free) for RASV Members
\$75.00 (GST free) for Non RASV Members

Bedding Fee: All Exhibitors are required to pay \$40.00 (GST inc.) for each Exhibit for bedding fees.

4. National Vendor Declaration must accompany livestock traveling to the Showgrounds for the purpose of this competition.

5. Steers and Heifers are eligible to compete, though eligibility for the Borlwick Trophy teams precludes heifers.

6. Each Exhibit must be tractable, and shall be led for Judging.

ARRANGEMENTS FOR HOOF & HOOK

7. The live classes will be representative of the four Market Categories for the carcase appraisal, as follows:

Market Category	HSCW (kg)	Actual fat depth (mm)		
		P8	11/12 Rib	12/13 Rib
A Light Domestic	100 - 180	4 - 8	4 - 6	3 - 6
B Medium Domestic	181 - 240	6 - 10	5 - 8	4 - 7
C Heavy Domestic	241 - 300	8 - 13	6 - 10	5 - 9
D Export	300+	12 - 17	8 - 13	7 - 12

8. All Exhibits will be weighed live, early morning on Friday 21 September 2012

9. The live classes will be finalised once all Exhibits have been weighed, and determined on manageable numbers as deemed by the RASV (approximately 20 Exhibits).

10. All Exhibits must be paraded live before the Judge to be eligible for judging on the hook.

11. Only entries exhibited by a recognised School, College or TAFE (School) will be eligible for the Schools' competition and awards.

12. School or College Exhibits denoted by (B&P) at the time of entry will be eligible for the Bred and Prepared trophy.

13. All Exhibitors shall state on their entry forms:

- the breed, cross of breeds or mixture of breeds;
- the birth date if known, otherwise the month born, of each animal entered so far as this is known;
- the name and breed of the sire and registration ID if known; and
- the name and breed of the dam and registration ID if known.

14. The RASV reserves the right to reject or limit entries at their absolute discretion, at any time, and for any reason. In this regard, Exhibitors are advised that accommodation for Beef Carcase Exhibits may be limited. If entries exceed the quantity that can be suitably accommodated, it may be necessary for the RASV to ballot entries. Exhibitors are also advised to read General Regulation 2.6.

15. For the purpose of this competition Hormone Growth Promotants are not permitted.

16. An animal or carcase which, in the opinion of the Chief Steward, shows secondary sex characteristics will be deemed to be a bull and will not be eligible for an award.

17. All Exhibits must be either polled or dehorned.

18. All Exhibits must comply with the Property Identification Code and National Livestock Identification Scheme legislation of Victoria. Exhibits not appropriately identified by means of an electronic identification will be deemed ineligible. The complete NLIS visual identification number must be provided at the time of entry.

19. The RASV reserves the right to insist that ineligible animals be removed from the Showgrounds at the expense of the Exhibitor upon request of the Chief Steward.

20. In order for Exhibits to be slaughtered, and therefore eligible for competition, Exhibitors must provide a National Vendor Declaration.

21. Subject only to the General Regulations, the Chief Steward reserves the right to make such determinations and directions on any matter in relation to the conduct of the Beef Carcase Competition, as he/she thinks fit.

22. The Chief Steward reserves the right to penalise, disqualify or make ineligible for an award any Exhibit in the Beef Carcase Competition that is determined to be outside of acceptable specifications in regard to weight, eye muscle area, meat colour, fat depth, fat colour, fat distribution and marbling.

23. All Exhibits shall be rung through the nose and at all times shall be led by such nose ring. This includes the unloading of livestock upon arrival at the Showgrounds.

24. All Exhibits for the Beef Carcase Competition are required to be housed as directed at the Showgrounds. Any proposed departure from this requirement by an Exhibitor must receive prior written permission from the RASV.

25. A complete Timetable of Arrangements for the Beef Carcase Section will be forwarded to each Exhibitor prior to the Show. The timetable that appears in this Schedule is subject to change and will be finalised once an indication of entry numbers for this competition is obtained.

ARRANGEMENTS FOR THE ALPA YOUNG AUCTIONEERS COMPETITION

26. Regulations of Beef Carcase Competition apply to the Competition as well as the specific arrangements as set out below.

27. A limited number of Exhibits will be accepted for this competition, therefore preference will be given to those Exhibitors who supported the competitions in its inaugural year.

28. Exhibits entered in the Competition should weigh between 380kg and 440kg live weight. Exhibits that do not meet weight specifications will not be penalised in the live judging component, however it may be reflected in the Exhibit's auction price.

29. Classes will be finalised once all exhibits have been weighed, and will be determined on manageable numbers.

30. All Exhibits will be judged live and then offered for sale by auction.

31. All Exhibits must be paraded live before the Judge on Saturday 22 September to be eligible for auction.

32. All ribbons won during the live judging must be worn by Exhibits during the ALPA Victorian Young Auctioneers Competition.

33. The settling agent will be set by the Australian Livestock & Property Agents Association. The commission rate on sales is 6.0% per animal sold and includes 1.0% to the RASV.

2012 CHARITY STEER



Royal Flying Doctor Service VICTORIA

In 2012, the RASV and ALPA Young Auctioneers Competition are pleased to announce that the proceeds of the final steer to be auctioned during the Competition will be donated to Royal Flying Doctor's Services.

As part of the 2012 Murray Grey Feature Show, the Charity Steer has been kindly donated by the McCrae Family - Dajory Stud, and prepared by Finley High School.

The Charity Steer, exhibit 36, was judged on the hoof, will be graded following the Royal Melbourne Show.

JUDGING OF BEEF CARCASSES

34. Carcasses will be judged within the general parameters of the Australian Beef Carcass Appraisal System (ABCAS), incorporating carcass attributes relevant to Market Specifications and Meat Standards Australia (MSA) developed eating quality standards.

35. Animals entered in Carcass Competitions cannot comply with the pre-slaughter management guidelines of MSA pathways, so their carcasses are not eligible for sale as MSA-graded beef. However, the principles of MSA grading will still be applied in judging the carcasses, according to the following Schedule of maximum points:

1. Market Specification	20 points	3. MSA Eating Quality*	45 points, combined
P8 Fat Depth	10	Ultimate meat pH	Units
Meat Colour	5	Ossification Score	100 - 590
Fat Distribution	5	Tropical Breed Content	0 - 100%
Penalties	As required	Hump Height	mm
2. Saleable Meat Yield	35 points	AUS-MEAT Marbling	0 - 6
		MSA Marbling	100 - 1190
Rib Fat Depth	15	Sex	Male/Female
Eye Muscle Area	20	Total	100 points

36. To receive eating quality points all carcasses must meet MSA minimum standards, as follows:

- | | |
|----|---|
| a) | Minimum 3mm of rib fat |
| b) | Adequate fat distribution |
| c) | Ultimate pH below 5.7 |
| d) | Meat colour of 1b and no greater than 3 |

37. Carcasses will not be penalised for bruising should any occur.

AWARDS FOR BEEF CARCASS COMPETITION

AWARDS - LIVE

38. Awards will be provided for each of the ordinary classes as follows:

- a) Ribbons: 1st, 2nd & 3rd places, plus Highly Commended and Commended.
 b) Prize money: 1st \$25, 2nd \$15, 3rd \$10.

39. First and second placed Exhibits from the ordinary classes will then compete for the following awards, and presented with a Sash:

- a) Champion Light Domestic Steer or Heifer
 b) Reserve Champion Light Domestic Steer or Heifer
 c) Champion Medium Domestic Steer or Heifer
 d) Reserve Champion Medium Domestic Steer or Heifer
 e) Champion Heavy Domestic Steer or Heifer
 f) Reserve Champion Heavy Domestic Steer or Heifer
 g) Champion Export Steer or Heifer
 h) Reserve Champion Export Steer or Heifer
 i) Grand Champion Steer or Heifer

40. The winner of Grand Champion Steer or Heifer will receive \$500 supported by Rural Finance.

41. The highest placed School & College Exhibits from each ordinary class will then compete for the following awards:

- a) Champion School & College Steer or Heifer
 b) Reserve Champion Schools & College Steer or Heifer

42. The highest placed Schools or Colleges Exhibits will be drawn only from the top five Exhibits in each live class, ie: 1st through to 3rd, Highly Commended and Commended. If a class does not have a School or College exhibit amongst these top five, then no Exhibit from that class will compete for Champion or Reserve Champion Schools Steer or Heifer awards.

CARCASS AWARDS

43. Awards will be provided for each of the Light Domestic, Medium Domestic and Heavy Domestic and Export carcass divisions as follows:
 a) Prize money: - 1st \$300, 2nd \$150, 3rd \$50

44. Sashes and wall plaques will also be awarded to:

- a) Champion Light Domestic Carcass
 b) Champion Medium Domestic Carcass
 c) Champion Heavy Domestic Carcass
 d) Champion Export Carcass
 e) Grand Champion Carcass
 f) Champion School & College Carcass

45. The Exhibitor of the Grand Champion Carcass will also be awarded \$1000 by The Royal Agricultural Society of Victoria.

SCHOOL AND COLLEGE PARADERS COMPETITION

46. Students from each School or College entering steers or heifers in the Royal Melbourne Show Beef Carcass Competition may enter the School & College Paraders Competition, which will be held on Sunday 23 September 2012.

47. Upon receipt of Entry in the 2012 Beef Carcass Competition, those Exhibitors that are eligible (ie: Schools and Colleges) will be forwarded a separate Entry form pertaining to the School & College Paraders Competition.

48. Paraders must be an enrolled student of a School or College, and, if not participating as part of a School or College program, must have written permission from their School or College to exhibit of their behalf.

49. Paraders must enter the Paraders Competition under the name of the School or College under which they have entered the Beef Carcass Competition.

50. Exhibits paraded must be entered in the Beef Carcass Competition under the School or College under which it is entered in the Paraders Competition.

51. Entries stating the name, age and School/College must be received at the RASV's Administration Office, located at Melbourne Showgrounds, Epsom Rd, Ascot Vale, 3032 by not later than 5.00pm on Friday 10 August 2012.

52. The number of students from each School or College is restricted to three for each steer or heifer exhibited (as opposed to entered). Points gained in this section contribute to the Most Successful School or College Exhibitor award.

53. Each Parader will be assessed for showmanship, animal/handler relationship preparation of animal, cleanliness of gear and suitability of animal.

54. A white coat or breed uniform recognised by The Royal Agricultural Society of Victoria Limited must be worn by the Parader when parading his/her animal.

55. All animals paraded must comply with the Regulations for Beef Carcass, especially with regard to the use of nose clips and nose rings.

56. Awards will be presented to the Paraders who best prepare an animal for the show ring, attention being given to the manner in which it is brought before the judges.

57. Classes will be arranged in suitable groups based on age.

58. Sashes will be awarded for:

- a) 1st, 2nd and 3rd in each class.
 b) Champion School & College Steer or Heifer Parader.
 c) Reserve Champion School & College Steer or Heifer Parader.

59. A Certificate of Participation will be awarded to all entrants. The RASV may choose to provide these Certificates after the completion of the Show.

MOST SUCCESSFUL SCHOOL OR COLLEGE HOOF & HOOK EXHIBITOR.

60. The Bolt-Burston perpetual trophy plus an annual replica will be awarded to the School or College gaining the highest total number of points in the School & College Paraders, Live Steer and Heifer, and Beef Carcass classes based on the following:

- a) 3 points for - 1st
 b) 2 points for - 2nd
 c) 1 points for - 3rd
 d) 2 points for - Grand Champion
 e) 3 points for - Champion
 f) 2 points for - Reserve Champion

THE MARCUS OLDHAM COLLEGE TROPHY

61. The Marcus Oldham College Perpetual Trophy will be awarded to the highest scoring carcass entered by a School or College. The trophy will remain in the possession of the RASV, and a replica will be awarded to the winning School or College.

4 BEEF CARCASE RESULTS

THE NORTHERN MELBOURNE INSTITUTE OF TAFE TROPHY

62. The Northern Melbourne Institute of TAFE Perpetual Trophy will be awarded to the highest scoring School or College Bred and Prepared carcass. The trophy will remain in the possession of the RASV, and a replica will be presented to the winning School or College.

THE BORTHWICK TROPHY

63. The Borthwick Trophy is celebrating its 60th year at the 2012 Royal Melbourne Show, and is widely recognised as the most prestigious interbreed steer and carcass award in Australia. The conditions of the competition are as under:

- The competition to be between teams of three purebred steers. Heifers are not eligible for the Borthwick Trophy.
- Steers to be led into the judging ring.
- Each team to be representative of any recognised Beef Cattle Breed.
- Each team to be selected from amongst the entries in the ordinary classes by a Breed Panel prior to live judging of these classes.
- Each breed to be represented by one team only.
- The results of both live and carcass judging will be considered in determining the winner of the Borthwick Trophy, with 25% of total points allocated for live judging and 75% of total points allocated for carcass appraisal. (Maximum points awarded by live judge - 100 points).
- Points gained by the steers in the carcass judging (maximum 300 points) to be added to the points awarded alive.
- The winner of the Borthwick Trophy will be the team that gains the highest aggregate points in both the live and carcass judging. (Maximum 400 points).
- The Borthwick Trophy to be competed for in perpetuity, and the name of the winning breed to be engraved on it each year. The Trophy to remain the property of The Royal Agricultural Society of Victoria Limited. A replica of the trophy will be presented to each of the Exhibitors of the winning team.

Past winners of the Borthwick Trophy are as follows:

1953	Angus	1983	Hereford
1954	Angus	1984	Angus
1955	Angus	1985	Poll Hereford
1956	Hereford	1986	Angus
1957	Angus	1987	Angus
1958	Angus	1988	Angus
1959	Angus	1989	Angus
1960	Poll Hereford	1990	Murray Grey
1961	Angus	1991	Charolais
1962	Poll Hereford	1992	Charolais
1963	Angus	1993	Murray Grey
1964	Angus	1994	Murray Grey
1965	Angus	1995	Murray Grey
1966	Angus	1996	Murray Grey
1967	Murray Grey	1997	Hereford
1968	Angus	1998	Shorthorn
1969	Poll Shorthorn	1999	Angus
1970	Poll Shorthorn	2000	Murray Grey
1971	Hereford	2001	Shorthorn
1972	Murray Grey	2002	Shorthorn
1973	Murray Grey	2003	Shorthorn
1974	Angus	2004	Murray Grey
1975	Murray Grey	2005	Charolais
1976	Murray Grey	2007	Charolais
1978	Galloway	2008	Charolais
1979	Galloway	2009	Limousin
1980	Galloway	2010	Simmental
1981	Murray Grey	2011	Limousin
1982	Angus	2012	Limousin

THE CLARK RUBBER STEER BONANZA

64. The Royal Melbourne Show Steer Bonanza is an optional 'opt-in' cash prize pool.

65. All steer and heifer exhibits eligible for the Beef Carcass Competition are eligible to take part.

66. Exhibitors must nominate on their entry form which exhibits they would like to enter in the Bonanza. Each entry is \$50 (incl GST). This fee is in addition to the standard entry fee. Full payment must be made upon entry.

67. Each exhibit may only be entered in the Bonanza once. An exhibitor may choose to enter as many or as few of their exhibits as they wish.

68. An Exhibitor has the option to substitute their Bonanza entry with another of their exhibits already entered in the ordinary classes of the Beef Carcass Competition. The substituted exhibit must be entered under the same Exhibitor Name. Substitutions must be made to the Superintendent's Office no later than 1 hour after the completion of weighing. Regular announcements will be made throughout the Pavilion, and it is the responsibility of the Exhibitor to ensure this deadline is met.

69. Substitutions can be made up until the deadline stated in Regulation 363. No new entries will be accepted after the close of entries on Friday 13 July 2012. Entries will only be accepted via the RASV Beef Carcass Competition Entry Form.

70. Entries in the Bonanza are not transferable between Exhibitors.

71. At the conclusion of carcass judging, the carcass results of all exhibits entered in the Bonanza will be ranked. The carcasses will not be grouped into classes prior to ranking.

72. The Bonanza carcass with the highest score will receive a cash prize of 50% of the total prize pool. The Bonanza carcass with the second highest score will receive a cash prize of 30% of the total prize pool. The Bonanza carcass with the third highest score will receive a cash prize of 20% of the total prize pool.

73. The total cash prize pool is inclusive of GST. If any of the winning exhibitors are not registered for GST, GST will not be paid.

74. If an animal is withdrawn from the Beef Carcass Competition after the close of entries, the Exhibitor may transfer the Bonanza entry to any of their exhibits that have not been entered in the Bonanza. If the Exhibitor has no exhibits that are not entered in the Bonanza, the Bonanza entry of the withdrawn exhibit will be forfeited, and is non-refundable.

75. Prizemoney will be allocated as follows (GST incl):

- 1st: \$2675
- 2nd: \$1605
- 3rd: \$1070

Clark
RUBBER
Have fun!

CONDITIONAL AND BREED SPECIFIC PRIZES

ANGUS

PRIZE: \$500 SUPPORTED BY THE **ANGUS SOCIETY OF AUSTRALIA**.

Awarded to the Exhibitor of the Grand Champion Carcase, provided it is sired by an Angus Bull, as nominated on the entry form.

AUSTRALIAN LOWLINE

PRIZE: \$500 SUPPORTED BY THE **AUSTRALIAN LOWLINE CATTLE ASSOCIATION**.

Awarded to the Exhibitor of the Grand Champion Carcase, provided the sire or dam is a registered Australian Lowline and nominated as such on the entry form.

BEEF SHORTHORN

PRIZE: **JOHN WILLIAMSON MEMORIAL TROPHY** SUPPORTED BY THE **BEEF SHORTHORN SOCIETY OF AUSTRALIA (VICTORIAN BRANCH)**.

Awarded to the Exhibitor of the Beef Shorthorn gaining the highest points for a carcase across all classes combined.

PRIZE: \$200 SUPPORTED BY THE **BEEF SHORTHORN SOCIETY OF AUSTRALIA (FEDERAL COUNCIL)**

Awarded to the Exhibitor of any winning animal in the live judging provided it is a Beef Shorthorn or Beef Shorthorn cross and is the progeny of a by a registered Beef Shorthorn sire or dam.

PRIZE: \$200 SUPPORTED BY THE **BEEF SHORTHORN SOCIETY OF AUSTRALIA (FEDERAL COUNCIL)**

Awarded to the highest scoring Beef Shorthorn or Australian Shorthorn or cross-bred steer or heifer carcase, where either the sire or dam is a registered Beef or Australian Shorthorn and provided that a minimum score of 75 points or more is achieved (highest scoring over all classes)

PRIZE: \$500 SUPPORTED BY THE **BEEF SHORTHORN SOCIETY OF AUSTRALIA (FEDERAL COUNCIL)**

Awarded to the Exhibitor of the Champion Steer on Hoof and Hook combined. Prize money to a maximum of \$500 only.

BELGIAN BLUE

THE FOLLOWING PRIZES ARE SUPPORTED BY THE **BELGIAN BLUE CATTLE SOCIETY INC.**

PRIZE: 1st \$50, 2nd \$25, 3rd \$10, LIVE (PER CLASS).

PRIZE: \$30

Awarded to the Exhibitor of the Live Grand Champion provided it is sired by a pure bred registered Belgian Blue.

PRIZE: \$15

Awarded to the Exhibitor of the Live Reserve Grand Champion provided it is sired by a pure bred registered Belgian Blue.

PRIZE: 1st \$100, 2nd \$50, 3rd \$25, CARCASE (PER CLASS)

PRIZE: \$100

Awarded to the Exhibitor of the Grand Champion Carcase provided it is sired by a pure bred registered Belgian Blue.

PRIZE: \$50

Awarded to the Exhibitor of the Reserve Grand Champion Carcase provided it is sired by a pure bred registered Belgian Blue.

BELTED GALLOWAY

THE FOLLOWING PRIZES ARE SUPPORTED BY THE **AUSTRALIAN BELTED GALLOWAY ASSOCIATION INC.**

PRIZE: \$50

Awarded to the Exhibitor of the highest scoring pure or cross bred Belted Galloway carcase, provided the cross bred is entered as a Belted Galloway.

PRIZE: \$150

Awarded to each Exhibitor of pure or cross bred Belted Galloway carcasses, provided the carcase gains 85 points or higher.

PRIZE: \$500

Awarded to the Exhibitor of Grand Champion Carcase provided it is a Belted Galloway or Belted Galloway cross

PRIZE: \$500

Awarded to the Exhibitor of Grand Champion steer provided it is a Belted Galloway or Belted Galloway cross.

CHAROLAIS

PRIZE: \$400

Awarded to the Exhibitor of the Grand Champion Carcase, provided such Exhibit is sired by a Charolais.

DEXTER

PRIZE: \$200 SUPPORTED BY **DEXTER CATTLE AUSTRALIA INC.**

Awarded to the Exhibitor of any winning animal in the live or carcase judging providing it is a Dexter or Dexter cross sired by a registered Dexter or from a Dexter mating

GALLOWAY

PRIZE: \$500 SUPPORTED BY THE **AUSTRALIAN GALLOWAY ASSOCIATION INC.**

Awarded to the Exhibitor of the Grand Champion Live or Carcase animal provided such exhibit is the progeny of a Galloway or Belted Galloway sire or dam registered with The Australian Galloway Association Inc.

HEREFORD

THE FOLLOWING PRIZES ARE SUPPORTED BY THE **AUSTRALIAN HEREFORD SOCIETY LTD.**

PRIZE: \$1000

Awarded to the Best Hereford/Poll Hereford carcase provided this animal also gains the Grand Champion Carcase Award.

PRIZE: \$200

Awarded to all Hereford/Poll Hereford Carcase gaining 82 points and over.

PRIZE: \$50 SUPPORTED BY **MRS MARGARET YELLAND**.

The Howard W. Yelland Award will be awarded to the Exhibitor of the highest scoring Hereford Carcase.

HIGHLAND

PRIZE: \$600 SUPPORTED BY THE **AUSTRALIAN HIGHLAND CATTLE SOCIETY INC.**

Awarded to the Exhibitor of the Highland gaining both first place and 80 points or higher in any Carcase class, provided the sire or dam is a Highland and nominated on the entry form.

Winning first place entitles the exhibitor to apply to the AHCS by 31 October in the current calendar year for inclusion in the AHCS Carcase Competition.

LIMOUSIN

THE FOLLOWING PRIZES ARE SUPPORTED BY THE **AUSTRALIAN LIMOUSIN BREEDERS SOCIETY LTD.**

PRIZE: \$250

Awarded to the Exhibitor of the Grand Champion Carcase provided it is sired by a Limousin.

PRIZE: \$150

Awarded to each Exhibitor of the Exhibits which win the Borthwick Trophy provided they are Limousins.

6 BEEF CARCASS RESULTS

MURRAY GREY

THE FOLLOWING PRIZES ARE SUPPORTED BY THE MURRAY GREY BEEF CATTLE SOCIETY

PRIZE: \$250

Awarded to the Exhibitor of any of the following Champions; Light Domestic, Medium Domestic, Heavy Domestic steer or heifer, Export steer or heifer, Champion School steer or heifer, as well as Light Domestic Carcase, Medium Domestic Carcase, Heavy Domestic Carcase, Export Carcase and Champion School Carcase, provided it is sired by registered Murray Grey.

PRIZE: \$1000

Awarded to the Grand Champion Carcase provided it is sired by a registered Murray Grey.

PRIZE: \$1000

Awarded to the Grand Champion Led Steer.

PRIZE: \$100 PER EXHIBIT

Awarded to each member of the winning Borthwick Trophy Murray Grey team.

PRIZE: \$250

Awarded to the highest scoring Murray Grey Carcase provided it is sired by a registered Murray Grey.

PRIZE: 1st \$50, 2nd \$30, 3rd \$20 LIVE (PER CLASS).

Exhibits must be sired by a registered Murray Grey and have been entered as such.

PRIZE: 1st \$50, 2nd \$30, 3rd \$20 CARCASS (PER CLASS).

Exhibits must be sired by a registered Murray Grey and have been entered as such.

RED ANGUS

THE FOLLOWING PRIZES ARE SUPPORTED BY THE RED ANGUS SOCIETY OF AUSTRALIA INC.

PRIZE: \$500

Awarded to the Exhibitor of a Red Angus or Red Angus sired crossbred animal that wins Grand Champion led steer, provided there are over 50 entries and has a RASA registered pedigree.

PRIZE: 1st \$150, 2nd \$75, 3rd \$25

Awarded to the Exhibitor of a Red Angus or Red Angus cross steer, placing 1st, 2nd or 3rd on the hook.

PRIZE: \$1000

Awarded to the Exhibitor of a Red Angus or Red Angus crossbred animal winning Grand Champion Carcase, provided there is over 50 entries and has a RASA registered pedigree.

PRIZE: \$100 PER EXHIBIT

Awarded to the Exhibitor(s) of Red Angus exhibits winning the Borthwick Trophy.

RED POLL

THE FOLLOWING PRIZES ARE SUPPORTED BY THE AUSTRALIAN RED POLL CATTLE BREEDERS INC. (VICTORIAN REGION)

PRIZE: \$250

Awarded to the Exhibitor of the Grand Champion Carcase, provided such Exhibit is a pure-bred Red Poll by a registered sire.

PRIZE: \$200

Awarded to the Exhibitor of the Highest Scoring pure bred Red Poll Steer.

PRIZE: \$200

Awarded to the Exhibitor of the Highest Scoring Cross Bred Steer provided it is at least 50% Red Poll.

SANTA GERTRUDIS

PRIZE: GRAND CHAMPION \$2000 OR \$1000 IF LESS THAN 50 CARCASS LED STEER ENTRIES supported by THE SANTA GERTRUDIS BREEDERS (AUST.) ASSOCIATION.

Awarded to the respective Exhibitors, provided the carcase is a Santa Gertrudis.

SHORTHORN

PRIZE: \$250 SUPPORTED BY SHORTHORN BEEF (VICTORIAN BRANCH)

Awarded to the Exhibitor of the Grand Champion provided such Exhibit is a pure bred Shorthorn. Name of Sire and Dam to be stated on the Entry Form.

PRIZE: \$100 SUPPORTED BY SHORTHORN BEEF (VICTORIAN BRANCH)

Awarded to the exhibitor of a Shorthorn steer placing 1st in the live class provided such an exhibit is by a registered sire or dam.

PRIZE: \$100 SUPPORTED BY SHORTHORN BEEF (VICTORIAN BRANCH)

Awarded to the exhibitor of a Shorthorn steer placing 1st on the hook provided such an exhibit is by a registered sire or dam.

PRIZE: \$250 SUPPORTED BY SHORTHORN BEEF (VICTORIAN BRANCH)

Awarded to the exhibitor of a Shorthorn steer gaining above 80 points.

PRIZE: The JOHN CRILLY MEMORIAL TROPHY will be awarded to the breeder of the highest scoring purebred Shorthorn Carcase.

SIMMENTAL

THE FOLLOWING SIMMENTAL PRIZES ARE SPONSORED BY THE VICTORIAN BRANCH OF THE AUSTRALIAN SIMMENTAL BREEDERS ASSOCIATION PROVIDED THE WINNING CARCASS IS NOMINATED ON THE ENTRY FORM AS SIMMENTAL, SIMMENTAL CROSS, SIMBEEF (MINIMUM 25% OR MORE SIMMENTAL) OR SIMANGUS.

PRIZE: \$500

Awarded to the exhibitor of the Light Domestic Champion Carcase.

PRIZE: \$200

Awarded to the highest scoring Light Domestic Simmental Carcase if not the winner.

PRIZE: \$500

Awarded to the exhibitor of the Medium Domestic Champion Carcase.

PRIZE: \$200

Awarded to the highest scoring Medium Domestic Simmental Carcase if not the winner.

PRIZE: \$500

Awarded to the exhibitor of the Heavy Domestic Champion Carcase.

PRIZE: \$200

Awarded to the highest scoring Heavy Domestic Simmental Carcase if not the winner.

PRIZE: \$500

Awarded to the exhibitor of the Export Champion Carcase.

PRIZE: \$200

Awarded to the highest scoring Export Champion Simmental Carcase if not the winner.

PRIZE: \$1500

Awarded to the exhibitor of the Grand Champion Carcase.

PRIZES \$1200

Awarded to the winner of the Borthwick Trophy.

PRIZE: \$500

Awarded to exhibitor of the Grand Champion on the Hoof.

SQUARE MEATERS

PRIZE \$200

Awarded to the Exhibitor of the Grand Champion Live or Carcase animal provided it is a Square Meaters, sired by a Square Meaters.

PRIZE \$100

Awarded to the Exhibitor of the Highest scoring Square Meaters steer or heifer on the "Hook" (must score over 80 points to be eligible for the prize), providing the animal is nominated as a Square Meaters or Square Meaters cross, exhibit to be the progeny of a registered Square Meaters sire or dam.

AUSTRALIAN BEEF CARCASS APPRAISAL SYSTEM (ABCAS)



The Australian Beef Carcass Appraisal System ranks beef carcasses on their overall merit, and gives feedback to producers about compliance to market specifications, the yield of saleable meat and the potential eating quality of the meat.

ABCAS combines the extensive experience of the NSW Department of Primary Industries in carcass judging and evaluation with the advanced technology of the world's most comprehensive grading system, Meat Standards Australia (MSA). Practices to improve and optimise meat quality have come directly from research by the Co-operative Research Centre (CRC) for Beef Quality.

ABCAS focuses on the factors that producers can control. In commercial grading, MSA accounts for many factors that affect eating quality but which the producer cannot control, such as pre-slaughter management, livestock handling, hanging method, chilling and ageing.

As far as possible, carcass competitions and educational activities should be structured in accordance with MSA grading requirements to optimise meat quality and demonstrate best practice. Please note that although ABCAS provides grading information on all carcasses, in many competitions they will not be eligible for sale as MSA-graded beef, either because they do not meet MSA licensing conditions, or because they cannot meet requirements for pre-slaughter management (e.g. no mixing of different mobs of cattle, and direct delivery from farm to abattoir).

To assess market suitability, the basic specifications of a carcass are judged for compliance against the specifications of the appropriate market category.

1. - Compliance to Market Specifications (20 points total)

Most markets require carcasses to meet basic specifications of age (dentition), sex, weight and P8 (rump) fat depth. Dentition is usually checked in the live cattle, and is not part of the carcass assessment, while some markets specify only steers.

1.1 - P8 Fat Depth (10 points) is measured on the hot carcass at the P8 site, over the rump, and is the method of describing fatness in the AUS-MEAT national carcass description language. It is commonly used to set market targets and for payment of premiums and discounts. Optimum P8 fat depth is the range set for each class (Market Category) in the carcass specifications.

1.2 - Meat Colour (5 points) is recorded using AUS-MEAT standard meat colour chips in a range of 1a (very pale) to 7 (very dark purple). Colour strongly influences consumer appeal, with bright, pinkish colours in the range 1b to 3 being most acceptable to consumers. Carcasses must meet the MSA specification of Meat colour 1b to 3 to receive eating quality points.

1.3 - Fat Distribution (5 points) Ideally, a carcass will have a thin, even fat cover over all the important cuts, especially over the rump and forward along the backline. This contributes to eating quality by slowing the chilling rate, and reduces weight loss due to dehydration as the carcass chills.

Carcasses will lose points for inadequate cover, or for heavy, wasteful deposits. Key areas for assessment of excessive fat deposits are the subcutaneous fat (especially over the ribs), intermuscular (seam) fat and internal fat in the cod, udder, ribs and brisket.

1.4 - Fat Colour is recorded for your information at the end of the eating quality section but has no direct impact on eating quality; excessive yellowing or softness may affect the saleability of the carcass. Fat colour is assessed on the internal seam fat at the quartered site using the AUS-MEAT chips and ranges from 0 (bright white) to 9 (very yellow).

There are no points allocated for fat colour but individual competitions may apply penalty points (max. 5) if a carcass exceeds Fat colour 3 or if a market specification for fat colour is set.

1.5 - Penalties may be applied to carcasses that:

- fall outside the specified weight range (usually 1 point per kg outside)
- Exceed Fat colour 3 or fall outside the specified fat colour range
- Show Secondary Sexual Characteristics (bull or stag)
- Fall outside specifications for dentition
- Exhibit obvious defects, e.g. bruising, blood splash, injection site damage.
- Carcasses must have adequate fat cover over the highlighted areas to receive maximum points.

2. - Saleable Meat Yield (35 points total)

- Saleable meat yield is the proportion of the carcass that is saleable as primal cuts and meat trimmings. It excludes bone and waste fat. High-yielding carcasses are preferred, and they are heavily muscled with a thin, even fat cover, but the fat depth and distribution must be adequate to meet quality requirements.

2.1 - Rib Fat Depth (15 points) is a good indicator of carcass yield with over-fat animals having lower yields. It is measured in millimetres at the quartering site (usually 10/11th or 12/13th rib). Optimum rib fat depth is the range set for each class (Market Category) in the specifications. To receive eating quality points, carcasses must meet the MSA minimum standard of 3mm at the quartering site.

2.2 - Eye Muscle Area (20 points) is a good indicator of the red meat content of the carcass. It is measured in square centimetres at the quartering site (10/11th or 12/13th rib) and points awarded according to the area measured in relation to the carcass weight. The larger the rib eye area in relation to the carcass weight the higher the points awarded.

3. - MSA Eating Quality (45 points, combined)

When Meat Standards Australia (MSA) grades a carcass, grading is based on the principles that:

1. The potential meat quality of an animal must be realised as far as possible by minimising stress between farm and slaughter, and by optimising chilling/electrical stimulation conditions during processing
2. There are known variable factors that affect the eating quality of individual muscles and adjustments are made for their effect.

The MSA Grading Model predicts eating quality of 40 muscles by 6 different cooking methods. It applies all our current knowledge about the factors affecting meat quality - which muscles they affect, by how much, and what interactions there are with other factors. These have been defined by a large research effort and more than 439 000 consumer product tests, involving some 62 800 consumers. In the Australian Beef Carcass Appraisal System the MSA eating quality score is the average predicted MSA eating quality score of 11 major primal cuts, cooked by their optimum method. Scores have been scaled to deliver a maximum of 45 points for eating quality. If carcasses fail to meet MSA minimum requirements, they are below the benchmark standard for high quality table beef and will not receive an eating quality score.

3.1 - Ultimate pH pH is a measure of acidity / alkalinity levels of the meat. It is very important for keeping quality (shelf life) and is related to its cooking properties, colour and consumer acceptance.

After slaughter, the reserves of glycogen (energy) in the animals' muscles are converted to lactic acid, causing the pH to fall. As long as there is adequate glycogen present at slaughter, the pH will fall to within the normal range of 5.4 to 5.7. If there is not enough glycogen (due to stress or poor nutrition) then pH will remain above the acceptable limit of pH 5.70 and the meat is likely to be dark in colour, with poor keeping quality.

High pH meat is more difficult to cook to the right degree of doneness. At the same temperature as a cooked normal steak, it appears much rarer and if further cooked will lose its juices and become tough and dry.

- MSA rejects carcasses with pH over 5.70
- A slight downward adjustment is made to eating quality of all cuts from carcasses high in the acceptable 5.70 range.

To maintain high glycogen levels it is important to maintain a high level of nutrition and water prior to slaughter and minimise transport and handling stress.

8 BEEF CARCASS RESULTS

Eating quality variables and their effect

In commercial grading, once cattle have been slaughtered and have met processor requirements for eligibility, the grader enters information about each carcass and the MSA Model predicts the eating quality of each cut (visit www.msagrading.com for further details). Predictions are scientifically based and validated by the extensive MSA consumer testing program.

Processor requirements include:

1. Meeting the MSA pH decline "window" - the rate of chilling and amount of electrical stimulation to optimise meat quality, determined by CRC research)

2. Cattle must be from a licensed producer / saleyard and must be accompanied by an MSA vendor declaration.

3. Direct consignment cattle must be killed the day after dispatch.

4. No mixing or drafting of different mobs of cattle.

Please note that the structure of some competitions may preclude the carcasses from commercial grading. In this case, the assessments are provided for education and feedback.

3.2 - Ossification (maturity) and Carcass Weight

Ossification score is a measure of physiological maturity of the beef carcass. Hot Standard Carcass Weight (HSCW) is used in conjunction with the ossification score to identify carcasses with greater weight for maturity - faster grown cattle have better eating quality.

As beef cattle mature the cartilage present around the bones of the spinal column gradually change into bone (ossify). The rate at which this occurs is reasonably predictable but is affected by factors such as sex and nutrition. The scale of ossification runs from 100 to 590.

Cuts from carcasses with lower ossification at the same weight are graded higher. Increasing ossification has a cut-by-cut effect with a high effect on some cuts (e.g. rump) and a low effect on others (e.g. oyster blade).

Ossification score is influenced by a number of other factors:

- Heifers tend to have higher ossification scores at the same age compared to steers
- Hormonal Growth Promotants (HGP) - treatment tends to increase ossification scores
- Nutritional setbacks or injury can increase ossification score, and this is not reversible.

Ossification score is assessed at three different locations on the sawn chine: the 5 sacral vertebrae (Tail), 6 Lumbar (back) and first 13 thoracic vertebrae (ribs).

3.3 - Tropical Breed Content (TBC) % and Hump Height

MSA data clearly shows that cattle with tropical breed content have a higher risk of delivering "unacceptable" beef to consumers. Research by the Beef CRC has found that these breeds do carry more genes associated with toughness, but if animals are well managed before slaughter and optimally processed, the differences are small. MSA research has determined that the major negative effect is toughening of the striploin, cube roll, tenderloin and oyster blade - all high value grilling cuts. The effect is smaller in the cuts with higher connective tissue such as brisket, topside, outside (silverside) and eye round.

The percentage of tropical breed content is taken into account by the grading model in combination with other factors. All cuts from 100% tropical breeds can still meet acceptable MSA consumer standards if the cattle are within age and fat limits and optimum eating quality interventions such as tenderstretch hanging, and ageing of cuts, are applied.

In crossbred cattle the hump height is an easily measured indicator of the percentage tropical breed content (TBC %). Animals of the same TBC can show different levels of visible traits such as hump, pizzle and ear length. Analysis of MSA data has confirmed that when adjusted for carcass weight, hump height can also be used to estimate the 'tropical breed effect' on eating quality. Hump height is measured in increments of 5mm on the hump muscle (*M. Rhomboideus*) on the animals' neck.

The tropical breed content (TBC) is supplied by the producer on the MSA Vendor Declaration or as the breed description on the competition entry form. Values are expressed as a percentage: 0, 12, 18, 25, 38, 50, 75, 100.

The grading model adjusts hump height for carcass weight and ossification, then checks this against the declared TBC% and applies whichever is the greater of the two eating quality adjustments.

3.4 - MSA and AUS-MEAT Marbling Score

Marbling is the intramuscular fat (IMF), which appears as fine flecks within the muscle. It is deposited unevenly throughout the body, increasing through the carcass towards the neck and decreasing towards the tail. As cattle fatten, deposits accumulate in all the main fat depots (under the skin, around the internal organs, between the muscles and inside the muscles) but some cattle have the genetic ability to favour the development of marbling within the muscles.

To maximise marbling, cattle must be on good nutrition, at least during the finishing stage, and well finished.

MSA research associates increased marbling with higher eating quality scores for many grilling and roasting cuts. The effect is greatest in the loin cuts (cube roll and striploin) but it is possible to achieve good eating quality without visible marbling.

The MSA grader assesses marbling on the exposed rib eye (eye-muscle) at the quartering site. AUS-MEAT marbling is assessed on a scale of 0 to 6, reported in tenths within each score, and is based on the total amount of marbling within the eye muscle.

An MSA-specific marbling score is also given on a scale of 100 to 1190, in increments of 10, with emphasis on its fineness and how it is distributed. This is thought to relate more closely to eating quality.

3.5 - Sex

There are small differences in eating quality between steers and heifers, other factors being equal. Although small, the effect of sex is rather complex, with heifers having a lower eating quality in some muscles and higher in others compared to steers.

The biological basis for the sex effect is not clear at this stage.

3.6 - Rib Fat

In ABCAS, Rib fat depth is primarily used as an indicator of saleable meat yield, but it also plays two roles in eating quality. Firstly, MSA requires a minimum of 3mm of subcutaneous fat at the quartering site with even fat distribution required over the entire body. This fat cover helps avoid eating quality problems caused by a rapid or irregular pattern of chilling (see fat distribution). Secondly, fatter carcasses have slightly improved eating quality, over and above that associated with marbling and in this case a small upward adjustment is made to the grilling cuts.

3.7 - Other variable factors affecting eating quality

There are other factors affecting eating quality in the MSA model, but most are usually constant across competition groups, or are outside the producer's control. The factors include:

3.7.1 - Hang Method

Tenderstretch hanging (from the pelvis) has a number of significant advantages over the traditional hanging from the Achilles tendon (AT or hock), including:

- Significant improvement in eating quality from most of the major high-priced cuts
- A reduced need for post-slaughter ageing to improve eating quality
- Significant improvement in eating quality of tropical breed types
- Counteracts the negative eating quality effects of hormonal growth promotants (HGPs)

3.7.2 - Hormonal Growth Promotants (HGPs)

HGPs have a negative effect on eating quality, especially in the grilling cuts, and this effect will soon become part of the eating quality calculation in the MSA model.

3.7.3 - Milk Fed Vealer (MFV)

Unweaned calves produce beef with better eating quality compared to weaned calves of similar age and fatness. The MSA model adjusts scores for all cuts.

3.7.4 - Saleyards

The extra stress of saleyard handling compared to direct transport from farm to abattoir has been shown to reduce eating quality. The MSA model adjusts scores across the carcass.

3.7.5 - Ageing

Storing beef carcasses or vacuum-packed cuts for up to 21 days at 0-1°C improves tenderness. Improvement is greatest in AT hung carcasses, in those with higher tropical breed content and those treated with HGPs.

HOW TO IMPROVE YOUR SCORE

The feedback from your score sheet provides a great deal of information and can identify areas for future improvement. When preparing cattle for a competition, remember that high scores come from three main factors:

- Meeting the weight, fat, sex and dentition specifications of the class
- High yield of saleable meat - optimum fat cover and heavy muscling
- High eating quality - young and well nourished, not stressed, with marbling as a bonus.

An "average" young animal will achieve a high score if it is fed well in the final six weeks, it is not excessively stressed in the 24 hours before slaughter and it meets the correct weight and fat specifications. Very high scores are possible by retaining these features and increasing saleable meat yield.

1. - Meeting market specifications

Key indicators: HSCW; sex; dentition; P8 fat depth; Meat colour; Fat colour.

Meeting the weight/fat target is the key starting point for achieving a high score. Achieving a weight and fat target is a complex combination of management and animal factors - frame size, muscling, genetics - and nutrition. Heavily muscled or large framed cattle require higher level of nutrition (and/or a longer time) to put on the same fat depth.

Optimal meat colour comes from cattle that are younger, have high levels of nutrition and low pre-slaughter stress (see meat quality).

Ideal fat colour (firm and white) results from feeding a grain-based ration. Young, grass-fed cattle produce a creamy-white fat colour, which is highly acceptable for most markets. Deeper yellow fat is undesirable and comes with older, grass-fed cattle. Some feeds can change the characteristics of fat, for example, large amounts of lupins can produce fat that is soft and greasy.

2. - Improving saleable meat yield

Key indicators: Eye-muscle area (EMA), rib fat depth.

"Yield" is the weight of saleable cuts as a percentage of carcass weight. It is not to be confused with dressing percentage which is the ratio of carcass to live weight. High-yielding carcasses are heavily muscled with optimum fat depth.

Among cattle meeting market specifications and minimum quality requirements for grading, the greatest potential to improve your score is by increasing yield. CRC research confirms that high yielding carcasses contain significantly more beef.

Ensure fat depth is within the optimum specifications - this will maximize your yield points with the particular animal. Overfat carcasses require more trimming, resulting in lower yield.

To increase EMA points, and therefore yield, after fat depth is optimized, in future you will need to select a more muscular animal. Consider these points:

- Crossbreed, using high-yielding sire breeds:
- Select bulls for moderate frame and heavy muscling, either visually or with help from BREEDPLAN EBVs for higher yield and EMA
- Heavily muscled cattle occur in most breeds, you don't have to use large European types.
- More muscular cattle usually put on less fat, especially if they are large framed - they may need more feed or longer preparation time to reach the target fat depth
- Females from heavily muscled bulls are just as functional for breeding, as long as you avoid the extremes.

3. - Improving eating quality

Key indicators: pH, Ossification score, Tropical Breed Content, Hump height, Marbling, Meat colour

The above key indicators along with other factors such as hanging method and ageing combine to produce the final eating quality score. As some factors interact with others, it is not possible to allocate points independently to each factor.

A score of zero in this section means the carcass failed to meet one or more of the minimum requirements for grading. This does not mean the beef has no value, but does mean its value has been severely downgraded against the industry's minimum quality benchmark.

If you received zero in the eating quality section, use the individual feedback assessments to identify the reason. It may be pH over 5.7, meat colour over Chip 3, rib fat depth less than 3mm or inadequate fat distribution. Any of these factors will result in a complete loss of meat quality points, and should be given highest priority for correction in the future.

High pH or dark Meat colour are signs of pre-slaughter stress and low energy reserves at slaughter. Ensure as a minimum that nutrition is kept at a high level in the two weeks prior to slaughter, the animal has a quiet temperament and there is minimum handling and minimum time between farm and slaughter.

Inadequate rib fat or fat distribution - feed a better quality ration with sufficient energy or feed for longer prior to slaughter.

Once the carcass has met minimum grading requirements the best ways to maximize your eating quality score are:

- Ensure optimum pH (5.4-5.6) and meat colour (1b to 1c) by building up energy reserves before slaughter (good nutrition, minimum stress, avoid mixing with strange cattle, minimise handling, minimum time from farm to slaughter)
- Minimise the tropical breed content (hump height)
- Do not use hormonal growth promotants (HGP)
- Increase marbling by using proven genetics (BREEDPLAN EBVs and GeneStar Marbling)
- Ensure good growth, without setbacks, and a fat cover near the top of the optimum range
- Aim for lower ossification score by faster growth for age

Apart from these animal factors, research by the Beef CRC and MSA has defined other significant factors that can be used to improve meat quality.

These are either included in MSA grading requirements or the variable factors in the meat quality calculation. They include:

- Minimising pre-slaughter stress by conducting necessary pre-slaughter assessments well beforehand (say 2 weeks), and transporting cattle direct to the abattoir for slaughter without delay
- Ensuring chilling and electrical stimulation are operated by the abattoir to optimum specifications
- Hanging carcasses by tenderstretch to improve the eating quality of most major cuts and reduce the need for ageing
- Ageing cuts after slaughter to increase tenderness.

Further Information

Meat Standards Australia - www.msagradeg.com

Beef CRC - www.beef.crc.org.au

NSW Department of Primary Industries - www.dpi.nsw.gov.au

BREED REFERENCES

AA - Angus	BW - British White	RA - Red Angus
AC - ABC Composite	BZ - Bazadaise	PH - Poll Hereford
AL - Australian Lowline	CC - Charolais	RP - Red Poll
AS - Australian Shorthorn	DX - Dexter	SD - South Devon
BA - Blonde D'Aquitaine	FF - Friesian	SG - Santa Gertrudis
BF - Braford	GA - Galloway	SI - Simmental
BG - Brangus	GV - Gelbvieh	SM - Simbrah
BL - Blonde D'Aquitaine	HH - Hereford	SS - Shorthorn
BS - Beef Shorthorn	LL - Limousin	SQ - Square Meaters
BV - Braunvieh	MG - Murray Grey	WB - Welsh Black

10 BEEF CARCASE RESULTS

ENTRIES

- 1 Ashwood Park Charolais: (CC), 23/09/11 Bred by H A Seeley S: Ashwood Park Ebling.
- 2 Ashwood Park Charolais: (CCXCC/SH), 01/05/11 Bred by H A Seeley S: Ashwood Park C25E.
- 3 Ashwood Park Charolais: (CCXRA), 01/03/11 Bred by H A Seeley S: Ashwood Park C24E.
- 4 Ashwood Park Charolais: (CC), 02/09/11 Bred by H A Seeley S: Vernola Hank.
- 5 Ashwood Park Charolais: (CC), 24/08/11 Bred by H A Seeley S: Ashwood Park Ebling.
- 6 B C & E M Atkins: (MG), 02/09/11 Bred by B C & E M Atkins S: Michaelong Trump Card A15, D: Silvergums Wallflower D332.
- 7 Barham High School: (PHXAA), 11/12/11 Bred by T Heffer.
- 8 Barham High School: (PH), 25/08/11 Bred by N J & J L Eagle S: Willowood Burma 3, D: Willowood Royal Tigress 49.
- 9 Barham High School: (MG), 12/12/11 Bred by G & A Martin S: Corrella Panic.
- 10 Barham High School: (RP), 04/09/11 Bred by S Storm & Sons S: Stormley Ice, D: Eurimbla Sanity.
- 11 Barham High School: (BG), 01/12/11 Bred by Keogh Cattle Co.
- 12 Billabong High School: (LL), 19/09/11 Bred by Mandayen Limousins S: Posthaven Polled Urban Cowboy, D: Mandayen Crystal B809.
- 13 Billabong High School: (SD), 29/05/11 Bred by S & S Hamson S: Kimdeen Halmark, D: Kimdeen Sheree.
- 14 Billabong High School: (LL), 23/05/11 Bred by Ballina Limousins S: Donna Valley Polled Zipper, D: Donna Valley Rochel.
- 15 Billabong High School: (LL), 28/09/11 Bred by Mandayen Limousins S: Wulfs Waldo T928W, D: Ramornie Daphne U5.
- 16 Billabong High School: (LLXAA/LLXAA), 04/09/11 Bred by Mandayen Limousins S: Mandayen Limflex E92, D: Mandayen Linflex E125.
- 17 Billabong High School: (SPXAL), 24/07/11 Bred by G & J Knight S: Wanamara Champagne Pretender.
- 18 Billabong High School: (LL), 29/08/11 Bred by Mandayen Limousins S: Wulfs Waldo T928W, D: Mandayen Very Special.
- 19 Billabong High School: (SPXAL), 24/07/11 Bred by G & J Knight S: Wanamara Champagne Pretender.
- 20 Billabong High School: (AAXSI), 11/08/11 Bred by J & J Pampa.
- 21 Black Caviar Steer Syndicate: (SIXSI/AA), 01/01/11 Bred by Corinda Downs.
- 22 Mr & Mrs I & A Burnside: (MG), 25/09/11 Bred by I & H Burnside S: Cratloe Billy A17, D: Cratloe Linda C21.
- 23 Mr & Mrs I & A Burnside: (MG), 01/10/11 Bred by I & A Burnside S: Michaelong Advance C1, D: Cratloe Hope Z28.
- 24 Chair Christian School: (LLXLL/AA), 25/11/11 Bred by E Lissenden S: Bruangil Park 642, D: Mt Teken 105.
- 25 Chair Christian School: (LL), 30/09/11 Bred by E Lissenden S: Mt Teken 518, D: Mt Teken 425.
- 26 Chair Christian School: (LL), 06/11/11 Bred by H Krutsch S: Vesper Hill 457, D: Bruangil Park 565.
- 27 Chair Christian School: (LL), 30/10/11 Bred by H Krutsch S: Vesper Hill 457, D: Vesper Hill 283.
- 28 Chair Christian School: (MG), 11/11/11 Bred by Siekman & Kent S: Gilldon Conargo C55, D: Kentsie Emily rose.
- 29 Claidhemh Organic Beef: (AA), 01/05/11.
- 30 Claidhemh Organic Beef: (AA), 01/04/11.
- 31 R Draper: (RP), 01/01/12 Bred by R Draper S: Redward Pipone.
- 32 Emmanuel College Inc: (AA), 13/03/11 Bred by G Lavender & M Drake.
- 33 Emmanuel College Inc: (HH), 20/08/11 Bred by K T & B L Hodge S: South Boorook Mumbai.
- 34 Emmanuel College Inc: (AA), 20/02/11 Bred by G Lavender & M Drake.
- 35 Emmanuel College Inc: (HH), 30/08/11 Bred by K T & B L Hodge S: Mundook Driza-bone, D: Mundook Driza-bone.
- 36 Finley High School: (MG), 18/09/11 Bred by Dajory Stud S: Dajory Bombay D11, D: Dajory Opal E38.
- 37 Finley High School: (AAXCC), 03/08/11 Bred by D & D Sexton.
- 38 Finley High School: (SS), 14/09/11 Bred by G & J Knight S: Nero Lock Duke, D: Grawenjobar Blance 74th.
- 39 Finley High School: (SS), 26/04/11 Bred by Finley High School S: Nero E.L. Balance B082, D: Finley High School Elite.
- 40 Finley High School: (CC), 13/09/11 Bred by Ashwood Park Charolais S: Ham Mogo U23, D: Ashwood Park Claire 2.
- 41 Finley High School: (LL), 09/08/11 Bred by B & S Griffiths S: Mandayen Guardian A488, D: Beckenham Concerto E10.
- 42 Finley High School: (PH), 30/05/11 Bred by J & M Doyle.
- 43 Finley High School: (HH), 03/08/11 Bred by Tondara Herefords S: Dunoon Sage A703, D: Tondara Curley 122.
- 44 Finley High School: (GAXAA), 05/07/11 Bred by Glenburn Station.
- 45 Finley High School: (AA), 20/07/11 Bred by J Montgomery.
- 46 Finley High School: (RAXHH), 17/09/11 Bred by J Colwell S: Trevone Park Wisdom, D: Trevone Park Wisdom.
- 47 Finley High School: (AA), 10/10/11 Bred by R & J Hawkins.
- 48 Finley High School: (SI), 04/03/11 Bred by T Baker S: Woonallee Cowboy, D: Woonallee 8049.
- 49 Finley High School: (LL), 21/11/11 Bred by B & S Griffiths S: Mandayen Guardian A488, D: Sandastre Luvly E12.
- 50 Geelong Grammar School, Timbertop: (CCXMG), 01/01/11 Bred by Geelong Grammar School, Timbertop S: Paringa West Wing.
- 51 Geelong Grammar School, Timbertop: (MG), 01/01/11 Bred by Geelong Grammar School, Timbertop S: Timbertop B12.
- 52 Geelong Grammar School, Timbertop: (MG), 01/01/11 Bred by Geelong Grammar School, Timbertop S: Timbertop B18.
- 53 Geelong Grammar School, Timbertop: (SPXMG/AA), 01/01/11 Bred by Geelong Grammar School, Timbertop S: King George.
- 54 Geelong Grammar School, Timbertop: (MG), 01/01/11 Bred by Geelong Grammar School, Timbertop S: Timbertop B18, D: Timbertop B18.
- 55 Geelong Grammar School, Timbertop: (MG), 01/01/11 Bred by Geelong Grammar School, Timbertop S: Kingston Park Zapping, D: Kingston Park Zapping.
- 56 Geelong Grammar School, Timbertop: (AAXMG), 01/01/11 Bred by Geelong Grammar School, Timbertop S: Ellingson Identity, D: Ellingson Identity.
- 57 Geelong Grammar School, Timbertop: (AAXMG), 01/01/11 Bred by Geelong Grammar School, Timbertop S: Ellingson Identity.
- 58 Geelong Grammar School, Timbertop: (AAXMG), 01/01/11 Bred by Geelong Grammar School, Timbertop S: Schaff Net Income.
- 59 Geelong Grammar School, Timbertop: (AAXMG), 01/01/11 Bred by Geelong Grammar School, Timbertop S: Ellingson Identity.
- 60 B & A Gill: (LL), 25/08/11 Bred by B & A Gill S: Bruangil Park Dynamo, D: Bruangil Park Abby.
- 61 B & A Gill: (LLXLL/AA), 20/09/11 Bred by B & A Gill S: Bruangil Park Dynamo.
- 62 B & A Gill: (LLXLL/AA), 08/09/11 Bred by B & A Gill S: Bruangil Park Dynamo.
- 63 Glenburn Station: (AA), 14/08/11 Bred by Glenburn Station.
- 64 Glenburn Station: (AA), 01/08/11 Bred by Glenburn Station.
- 65 Glenburn Station: (SIXAA), 09/11/11 Bred by Pert Angus.
- 66 Glenburn Station: (AA), 29/05/11 Bred by Glenburn Station.
- 67 Glenburn Station: (MG), 09/01/12 Bred by Glenburn Station.
- 68 Glenburn Station: (AA), 08/07/11 Bred by Glenburn Station.
- 69 Glenburn Station: (AAXGA), 14/10/11 Bred by Glenburn Station.
- 70 Glenormiston - South West Tafe: (AA), 02/04/11 Bred by Glenormiston - South West Tafe.
- 71 Glenormiston - South West Tafe: (HH), 01/08/11 Bred by K T & B C Hodge S: Mundook Driza-bone.
- 72 Glenormiston - South West Tafe: (RP), 30/04/11 Bred by Turanga Red Poll S: Turanga Kowallah, D: Red Hot Goldah.
- 73 Glenormiston - South West Tafe: (SD), 15/08/11 Bred by Tesbury Partnership S: Tesbury Elwood, D: Tesbury Dianne D11.
- 74 Glenormiston - South West Tafe: (SD), 17/08/11 Bred by Tesbury Partnership S: Tesbury Gadlora Zion, D: Tesbury Ziola Z6.
- 75 Glenormiston - South West Tafe: (SD), 28/08/11 Bred by Tesbury Partnership S: Tesbury Eddie E39, D: Tesbury Emily E53.
- 76 Goulburn Valley Grammar: (RA), 28/08/11 Bred by Boland Family S: Trevone Park Red Rock, D: Trevone Park Red Rock.
- 77 Goulburn Valley Grammar: (RA), 01/01/11 Bred by Mcdonald Family S: Ferndale Park Bustor, D: Yonda Grange 356.

- 78 C & J Grant: (MG), 01/06/11 Bred by C & J Grant S: Kelso Domino D27, D: Kelso Katherine D45
- 79 C & J Grant: (MG), 22/09/11 Bred by C & J Grant S: Lindsay Dedicate D163, D: Kelso Elsa B8
- 80 C & J Grant: (MG), 01/05/11 Bred by C & J Grant S: Kelso Eureka E11, D: Hovea park Dulcie D8
- 81 C & J Grant: (MG), 30/03/11 Bred by C & J Grant S: Kelso Eureka E11, D: Kelso Elsa D5
- 82 Grant High School: (MG), 15/05/11 Bred by C & J Grant S: Lindsay Windsor A219, D: Kelso Donna A17
- 83 Grant High School: (AL), 20/06/11 Bred by Grand High School S: Argio Park Frank, D: Grant High Mystique Lilly
- 84 Grant High School: (MG), 10/10/11 Bred by C & J Grant S: Lindsay Dedicate 0163, D: Kelso Trina D49 Tw
- 85 Grant High School: (SI), 08/06/11 Bred by G C & V J Muller S: Rellum Farms Carisma, D: Rellum farms Lilly 36
- 86 B & S Griffiths: (LL), 19/11/11 Bred by B J & S J Griffiths S: Mandayen Guardian A488, D: Mandayen Pretty Lady D1179
- 87 B & S Griffiths: (LL), 10/07/11 Bred by B J & S J Griffiths S: Mandayen Guardian A488, D: Beckenham Callistemon C4
- 88 B & S Griffiths: (LL), 11/11/11 Bred by B J & S J Griffiths S: Mandayen Guardian A488, D: Sandastre Ecstasy
- 89 Gundagai High School: (AA), 20/09/11 Bred by Gundagai High School S: Bongongo D28, D:
- 90 Gundagai High School: (AA), 15/07/11 Bred by Abingdon Station
- 91 Gundagai High School: (AA), 08/09/11 Bred by Gundagai High School S: Bongongo D28, D:
- 92 Gundagai High School: (AA), 25/07/10 Bred by Abingdon Station
- 93 Kerang Technical High School: (LL), 01/11/11 Bred by A & M Van Der Drift
- 94 Kerang Technical High School: (LL), 01/09/11 Bred by A & M Van Der Drift
- 95 Kerang Technical High School: (LL), 01/11/11 Bred by A & M Van Der Drift
- 96 Kerang Technical High School: (LL), 09/09/11 Bred by A & M Van Der Drift
- 97 Kerang Technical High School: (LL), 01/09/11 Bred by A & M Van Der Drift
- 98 Kerang Technical High School: (LL), 01/09/11 Bred by A & M Van Der Drift
- 99 Kerang Technical High School: (LL), 01/09/11
- 100 Kerang Technical High School: (LLCMG), 01/09/11 Bred by C Campbell
- 101 Kerang Technical High School: (LLXAA), 01/09/11 Bred by A & M Van Der Drift (WITHDRAWN)
- 102 Kerang Technical High School: (LLXCAA), 01/09/11 Bred by A & M Van Der Drift
- 103 Kerang Technical High School: (LLXMG), 01/09/11 Bred by C Campbell
- 104 Kerang Technical High School: (LL), 01/11/11 Bred by A & M Van Der Drift
- 105 Mrs J Knight: (AL), 21/07/11 Bred by S: Wanamara Guinness, D: Colombo Park Zerlina
- 106 H Krutsch: (LLXLL/HH), 16/08/11 Bred by H Krutsch S: Vesper Hill 294, D: Vesper Hill 10B
- 107 Mrs E Lissenden: (LL), 05/10/11 Bred by E Lissenden S: The Pines Victor, D: Mt Teken 340
- 108 Longerenong College: (RA), 06/08/11 Bred by Longerenong College S: Warranty, D: Yonda Grange D04
- 109 Longerenong College: (RAXHH/CC), 30/07/11 Bred by Longerenong College S: Marksman B19, D: Longerenong 9.32
- 110 Longerenong College: (MG), 28/03/11 Bred by Arki Murray Grey Stud S: Arki Buster B35, D: Windhaven Expo
- 111 Longerenong College: (CC), 15/05/11 Bred by K & V Winfield S: Uren by Cross Laurel
- 112 Longerenong College: (CCXBA/HH), 03/08/11 Bred by Longerenong College S: Palgrove Walkover, D: Longerenong 6.20
- 113 Longerenong College: (SS), 16/03/11 Bred by R A & J K Brook S: Marallen Humdinger, D: Eloora Sparkling Light E48
- 114 Longerenong College: (RAXHH/CC), 29/07/11 Bred by Longerenong College S: Red Robin, D: Longerenong 6.55
- 115 Longerenong College: (CCXAA), 14/03/11 Bred by Delamere Charolais S: Delamere Drumstick, D:
- 116 Longerenong College: (LLXRA), 23/08/11 Bred by Longerenong College S: Jupiter Crush, D: Yonda Grange C08
- 117 Longerenong College: (LL X RA), 07/10/11 Bred by Longerenong College S: Jupiter Crush, D:
- 118 Longerenong College: (LL), 17/09/11 Bred by Mainstream Limousins S: Mainstream Artichoke, D:
- 119 Longerenong College: (LL), 15/11/11 Bred by S: Homestation B3206
- 120 Longerenong College: (LL), 10/11/11 Bred by Mainstream Limousins S: Home Station B3206
- 121 Longerenong College: (LL X RA), 02/10/11 Bred by Longerenong College S: Jupiter Crush, D: Yonda Grange D09
- 122 Longerenong College: (LL), 15/04/11 Bred by J & J Repper S: Donna Valley Polled Condor, D: Gluepot Lady
- 123 K & G Lorains: (AL), 16/09/11 Bred by K & G Lorains S: Whitby Farm Freeman, D: Whitby Farm Wonola
- 124 Mc Kay Bros: (SS), 26/09/11 Bred by McKay Bros S: Marschay Endeavour, D: Marschay B79
- 125 Mortlake P.12 College: (AA), 13/03/11 Bred by J & K Bamford S: Banquet Darryn D401
- 126 G C & V J Muller: (SI), 18/06/11 Bred by G C & V J Muller S: Rellum Farms Carisma
- 127 Nagle College: (HH), 27/07/11 Bred by Mawarra Herefords S: Lismore More, D: Cherry Ripe 280
- 128 Nagle College: (HH), 28/06/11 Bred by K Davies S: Mawarra Upperclass
- 129 Nagle College: (MG), 05/08/11 Bred by K & L Treasure S: Mulberry New Design
- 130 Nagle College: (HH), 11/08/11 Bred by K Davies S: Mawarra Underbool
- 131 Nagle College: (LL), 12/08/11 Bred by D & G Freshwater S: Cliftonview Yes
- 132 Nagle College: (BVXMG), 06/10/11 Bred by K & L Treasure
- 133 Nagle College: (RAXSI/AA), 18/08/11 Bred by Cameron Bros
- 134 Nagle College: (LL), 02/09/11 Bred by D & G Freshwater S: Birubi Ernie
- 135 Nagle College: (BAXAA), 12/10/11 Bred by Bellpark Blondes S: Renard Archer
- 136 Northern Melbourne Institute of Tafe: (CCXAA), 02/03/11 Bred by Northern Melbourne Institute of Tafe S: Glen Aim A13E
- 137 Northern Melbourne Institute of Tafe: (BAXAA), 01/07/11 Bred by Old Kentucky Blondes S: Rahnik Dreamer
- 138 Northern Melbourne Institute of Tafe: (AA), 19/03/11 Bred by Northern Melbourne Institute of Tafe S: Strathewen Yellowstone A60
- 139 Northern Melbourne Institute of Tafe: (CCXAA), 07/03/11 Bred by Northern Melbourne Institute of Tafe S: Glenlea Aim A13E
- 140 Northern Melbourne Institute of Tafe: (BAXHH), 06/07/11 Bred by Old Kentucky Blondes S: Rahnik Dreamer
- 141 Northern Melbourne Institute of Tafe: (CCXAA), 14/02/11 Bred by Northern Melbourne Institute of Tafe S: Glenlea Aim A13E
- 142 Northern Melbourne Institute of Tafe: (CCXAA), 11/02/11 Bred by Northern Melbourne Institute of Tafe S: Glenlea Aim A13E
- 143 Northern Melbourne Institute of Tafe: (CCXAA), 04/02/11 Bred by Northern Melbourne Institute of Tafe S: Glenlea Aim A13E
- 144 J O'Brien: (LL), 21/02/11 Bred by J O'Brien S: Romn Made to Order, D: Bonian Polled Zuri
- 145 Onward Murray Greys: (MG), 16/09/11 Bred by Onward Murray Greys S: Kelso Babalon, D: Ondlong Sally 29th
- 146 Onward Murray Greys: (MG), 30/08/11 Bred by Onward Murray Greys S: Onward Farouk, D: Onward Titian D43
- 147 Miss J Parker: (AAXMG), 24/08/11 Bred by J Parker S: Kanandra Valley Alton Brook Y19
- 148 Miss J Parker: (MG), 03/08/11 Bred by J Parker S: Willalooka Nokuna
- 149 Powe Family: (MG), 08/11/11 Bred by Powe & Vernon S: Ayr Park Banjo
- 152 Rural Industry Skill Training: (LL), 22/08/11 Bred by Conquest Limousins S: Conquest Young Knight, D: Conquest Yo-Yo
- 153 Rural Industry Skill Training: (LL), 10/06/11 Bred by Conquest Limousins S: Conquest Devils Child, D: Timor Hannah
- 154 Rural Industry Skill Training: (AAXBG/JJ), 03/10/11 Bred by Rachel Alexander S: Midnight, D: Winton Park Cheesecake
- 155 Rural Industry Skill Training: (BLXBG), 18/08/11 Bred by Corumbene Brangus

12 BEEF CARCASS RESULTS

- 156 **Rutherglen High School:** (WB), 07/08/11 Bred by D Laird S: Maldwyn King, D: Yarunga Jean
- 157 **Rutherglen High School:** (WB), 01/06/11 Bred by Rutherglen High School S: Silvermetal Huw
- 158 **Rutherglen High School:** (WB), 01/12/10 Bred by C & T Sedgman S: Silver Metal Hopcyn, D: Blackwater Park Yvonne
- 159 **Rutherglen High School:** (CCXWB), 01/01/11 Bred by W Jones S: Fallsview C25, D: Silvermetal Sm509
- 160 **Rutherglen High School:** (AA), 05/07/11 Bred by Fernhill Angus Stud S: T C Franklin
- 161 **Mrs L Senger:** (ALXPH), 21/03/11 Bred by Ms L Senger S: Colombo Park Debussy
- 162 **Dr K Sieben:** (BAXMG), 12/09/11 Bred by K G & J E Sieben S: Rahnik Dark Knight, D: Bottlesford W37
- 163 **Dr K Sieben:** (BAXMG), 10/09/11 Bred by K G & J E Sieben S: Rahnik Dark Knight, D: Bottlesford X37
- 164 **Six-Four-C:** (SI), 04/05/11 Bred by A Copping S: Rellum farms Eliminator, D: Auscan Antionette
- 165 **St Mary of The Angels College:** (LLXLL/SS), 20/06/11 Bred by Nelson Family
- 166 **St Mary of The Angels College:** (SI), 04/10/11 Bred by H Du Vallon S: Clitheroe Casanova, D: Clitheroe Shanon
- 167 **St Mary of The Angels College:** (BLXSSX), 13/08/11 Bred by Nelson Family S: Three Way Superstar (WITHDRAWN)
- 168 **St Mary of The Angels College:** (CCXSG), 01/01/12 Bred by P Loeffel
- 169 **St Mary of The Angels College:** (AL), 16/09/11 Bred by K & G Lorains S: Whitby Farm Freeman, D: Whitby Farm Wanda
- 170 **St Mary of The Angels College:** (CB), 01/12/11
- 171 **St Mary of The Angels College:** (BLXSSX), 08/08/11 Bred by Nelson Family S: Three Way Superstar
- 172 **St Pauls College:** (MG), 01/10/11 Bred by S & J Priestly
- 173 **St Pauls College:** (SIXAA), 20/09/11 Bred by C & K Schulz
- 174 **St Pauls College:** (AA), 20/09/11 Bred by St Paul's College
- 175 **St Pauls College:** (SIXAA), 16/09/11 Bred by C & K Schulz
- 176 **St Pauls College:** (AAXHH), 25/10/11 Bred by St Paul's College
- 177 **Miss L Stewart:** (AA), 01/03/10 Bred by L Stewart S: Te Mania Africa A217
- 178 **Miss L Stewart:** (AA), 02/03/10 Bred by L Stewart S: Te Mania Daiquiri D19
- 179 **Miss L Stewart:** (AA), 03/03/10 Bred by L Stewart S: Te Mania Daiquiri D19
- 180 **Miss L Stewart:** (AA), 04/03/10 Bred by L Stewart S: Te Mania Daiquiri D19
- 181 **Sutherland & Sutherland:** (MG), 19/02/11 Bred by S: Thologolong Wodonga
- 182 **Team H/Alberni Family:** (CCXSS), 01/01/11 Bred by M Alberni S: Ditto, D: Broome Ooria Wallflower
- 183 **Team H/Alberni Family:** (CCXSS), 01/01/11 Bred by T Alberni S: Ditto, D: Broome Outwit Wayard
- 184 **Team H/C & L Daley:** (SD), 15/09/11 Bred by C & L Daley S: The bend Digger, D: The bend Bayley
- 185 **Team H/E.J. Angus/D & C Grylls:** (AA/SIXAA), 07/10/11 Bred by Pert Angus S: Pert Dream On C112, D: Pert Angus Equator
- 186 **Team H/E.J. Angus/D & C Grylls:** (AA), 08/12/11 Bred by E J Angus S: E.J. Astron D40
- 187 **Team H/E.J. Angus/D & C Grylls:** (AA), 06/11/11 Bred by E J Angus S: E.J. Astron D40
- 188 **Team H/R & C Nuttall/J & S Nuttall:** (AAXHH), 21/07/11
- 189 **Team H/Rigdale & Parkdale Willows Limousin:** (LLXAA), 28/08/11 Bred by Parkdale Willows S: Donna Valley Poll Bring It On
- 190 **Team H/Rigdale & Parkdale Willows Limousin:** (LL), 28/07/11 Bred by Parkdale Willows S: Willow Park Xtra Koolkid, D: Two Rock Claudia
- 191 **Team H/The Bend South Devons:** (SD), 08/09/11 Bred by The Bend South Devons S: The Bend C27 Cobber, D: The Bend T05 Ebony
- 192 **Team H/The Bend South Devons:** (SD), 29/08/11 Bred by The Bend South Devons S: The Bend E35 Eveready, D: The Bend E16 Esther
- 193 **The Hamilton & Alexandra College:** (AA), 01/03/11 Bred by J & K Bamford S: Banquet Darryn D491
- 194 **The Hamilton & Alexandra College:** (AA), 15/03/11 Bred by S & N Branson S: Banquet Darryn D491 (WITHDRAWN)
- 195 **Tippetts Glengyron:** (SS), 15/10/11 Bred by Tippetts Glengyron S: Sprys Imf Legend E020, D: Glengyron Rose 59
- 196 **Tippetts Glengyron:** (SS), 02/12/11 Bred by Tippetts Glengyron S: Sprys Imf Legend E020, D: Glengyron Rose 73
- 197 **Urrbrae Agricultural High School:** (CCXSS), 16/06/11 Bred by A Hurst S: Rosedale Dartmoor
- 198 **Urrbrae Agricultural High School:** (SI), 10/04/11 Bred by Woonallee Simmentals S: Woonallee Cowboy, D: Woonallee 8302
- 199 **Wagga Wagga High School:** (CCXHH), 01/03/11
- 200 **Wagga Wagga High School:** (AA), 01/03/11 Bred by P Goldman
- 201 **Wagga Wagga High School:** (SS), 09/07/11 Bred by T Willis
- 202 **Wallawong Murray Greys:** (MG), 09/07/11 Bred by Wallawong Murray Greys S: Wallawong Ripsnorter, D: Wallawong Dawn 10th
- 203 **Wallawong Murray Greys & Toqueza Ltd:** (MG), 15/07/11 Bred by Toqueza Ltd S: Wallawong Real Deal
- 204 **Wattlewood & H C Glover & Son:** (MG), 01/07/11 Bred by S: Crafoe Anton A6
- 205 **Wattlewood & H C Glover & Son:** (MG), 01/07/11 Bred by S: Crafoe Anton A6
- 206 **Wattlewood & H C Glover & Son:** (MG), 01/07/11 Bred by S: Crafoe Anton A6
- 207 **Wattlewood & H C Glover & Son:** (MG), 01/07/11 Bred by S: Crafoe Anton A6
- 208 **Williams River Cattle Co:** (MG), 26/10/11 Bred by R & H Muscat S: Glenliam Farm Drover D107
- 209 **Williams River Cattle Co:** (MG), 08/10/11 Bred by Williams River Cattle Co S: Glenliam Farm Zeppelin Z80
- 210 **Williams River Cattle Co & Richardson Pastoral Co:** (MG), 15/09/11 Bred by Richardson Pastoral Co S: Glenliam Farm Detonator D14
- 211 **Williams River Cattle Co & Richardson Pastoral Co:** (MG), 20/10/11 Bred by Richardson Pastoral Co S: Glenliam Farm Detonator D14
- 212 **Williams River Cattle Co & T & J Morton:** (LLXMG), 23/09/11 Bred by T & J Morgan S: Greenacres Bakelite
- 213 **Williams River Cattle Co & T & J Morton:** (LLXMG), 17/11/11 Bred by T & J Morgan S: Greenacres Bakelite
- 214 **Williams River Cattle Co & T & J Morton:** (LLXMG), 18/12/11 Bred by T & J Morgan S: Greenacres Bakelite
- 215 **Yanco Agricultural High School:** (SS), 12/09/11 Bred by Outback Shorthorns S: Sprys Solution E006, D: Evlio Ledgers Caramello Z28
- 216 **Yanco Agricultural High School:** (LL), 10/04/11 Bred by Yanco Agricultural High School S: Ambledale Black Doutron
- 217 **Yanco Agricultural High School:** (SS), 15/09/11 Bred by Glenalbyn Properties S: Sprys Tic Canyon
- 218 **Yanco Agricultural High School:** (SS), 22/08/11 Bred by Outback Shorthorns S: Sprys Solution E006, D: Outback Actress D53
- 219 **Yanco Agricultural High School:** (LL), 16/12/11 Bred by B J & S J Griffiths S: Mandayen Guardian, D: Beckenham Zsa Zsa
- 220 **Yanco Agricultural High School:** (LL), 19/07/11 Bred by B J & S J Griffiths S: Mandayen Guardian, D: Beckenham Vision of Gold
- 221 **Yanco Agricultural High School:** (AA), 03/10/11 Bred by The Glen Pastoral
- 222 **Yanco Agricultural High School:** (AAXSS), 15/07/11 Bred by Sprys Shorthorns S: Waukaru Patent 8161
- 223 **Yanco Agricultural High School:** (MGXAA), 05/09/11 Bred by The Glen Pastoral S: Cudgegong Park Bass
- 224 **Yanco Agricultural High School:** (LL), 28/08/11 Bred by G R & K A Hedger S: Garren Park Bailey, D: Garren park Danette
- 226 **Yanco Agricultural High School:** (LL), 07/10/11 Bred by Progress Limousin S: Premier Dodge Ram E76, D: Ultimate Ellen
- 227 **Yanco Agricultural High School:** (SS), 06/07/11 Bred by Outback Shorthorns S: Futurity Convertible C109, D: Outback Fay E58
- 228 **Yanco Agricultural High School:** (SS), 16/07/11 Bred by G & L Spry S: Lone Pine Jettstat D012
- 229 **Yanco Agricultural High School:** (SS), 06/09/11 Bred by S & A Carter S: Emross Legendary Stuff, D: Blackjack Fenders Clipper
- 230 **Finley High School:** (HH), 17/10/11 Bred by Tondara Herefords S: Smithston Classic Hit, D: Tondara Leonie 71

2012 ROYAL MELBOURNE SHOW BEEF CARCASS COMPETITION

LIVE CHAMPION AWARDS

GRAND CHAMPION STEER OR HEIFER

Exhibit 49, Finley High School, (Limousin)
(bred by B & S Griffiths)

CHAMPION LIGHT DOMESTIC STEER OR HEIFER

Exhibit 169, St Mary of the Angels College, (Australian Lowline)
(bred by K & G Lorains)

RESERVE CHAMPION LIGHT DOMESTIC STEER OR HEIFER

Exhibit 187, Team H / E.J. Angus / D & C Grylls, (Angus)

CHAMPION MEDIUM DOMESTIC STEER OR HEIFER

Exhibit 49, Finley High School, (Limousin)
(bred by B & S Griffiths)

RESERVE CHAMPION MEDIUM DOMESTIC STEER OR HEIFER

Exhibit 210, Williams River Cattle Co. & Richardson Pastoral Co. (Murray Grey)

CHAMPION HEAVY DOMESTIC STEER OR HEIFER

Exhibit 16, Billabong High School, (Limousin/Angus x Limousin/Angus)
(bred by Mandayen Limousins)

RESERVE CHAMPION HEAVY DOMESTIC STEER OR HEIFER

Exhibit 188, Team H / R & C Nuttall / J & S Nuttall, (Angus x Hereford)

CHAMPION EXPORT STEER OR HEIFER

Exhibit 21, Black Caviar Steer Syndicate, (Simmental x Simmental/Angus)
(bred by Corinda Downs)

RESERVE CHAMPION EXPORT STEER OR HEIFER

Exhibit 64, Glenburn Station, (Angus)

14 BEEF CARCASS RESULTS

LIVE CLASS RESULTS

CLASS 1 - Light Domestic

- 1st 169 St Mary of The Angels College (AL)
2nd 187 Team H/E.J. Angus/D & C Grylls (AA)
3rd 123 K & G Lorains (AL)

CLASS 2 - Heat 1 - Medium Domestic

- 1st 195 Tippetts Glengyron (SS)
2nd 17 Billabong High School (SPxAL)
3rd 24 Chairo Christian School (LLxLL/AA)
4th 88 B & S Griffiths (LL)
5th 4 Ashwood Park Charolais (CC)

CLASS 2 - Heat 2 - Medium Domestic

- 1st 49 Finley High School (LL)
2nd 211 Williams River Cattle Co & Richardson Past Co (MG)
3rd 3 Ashwood Park Charolais (CC)
4th 27 Chairo Christian School (LL)
5th 26 Chairo Christian School (LL)

CLASS 2 - Heat 3 - Medium Domestic

- 1st 210 Williams River Cattle Co & Richardson Past Co (MG)
2nd 77 Goulburn Valley Grammar (RA)
3rd 214 Williams River Cattle Co & T & J Morton (LLxMG)
4th 18 Billabong High School (LL)
5th 149 Powe Family (MG)

CLASS 3 - Heat 1 - Heavy Domestic

- 1st 5 Ashwood Park Charolais (CC)
2nd 161 Mrs L Senger (ALxPH)
3rd 69 Glenburn Station (AAxGA)
4th 204 Wattlewood & H C Glover & Son (MG)
5th 226 Yanco Agricultural High School (LL)

CLASS 3 - Heat 2 - Heavy Domestic

- 1st 132 Nagle College (BVxMG)
2nd 106 H Krutsch (LLxLL/HH)
3rd 120 Longerenong College (LL)
4th 95 Kerang Technical High School (LL)
5th 129 Nagle College (MG)

CLASS 3 - Heat 3 - Heavy Domestic

- 1st 224 Yanco Agricultural High School (LL)
2nd 91 Gundagai High School (AA)
3rd 213 Williams River Cattle Co & T & J Morton (LLxMG)
4th 145 Onward Murray Greys (MG)
5th 62 B & A Gill (LLxLL/RP)

CLASS 3 - Heat 4 - Heavy Domestic

- 1st 134 Nagle College (LL)
2nd 117 Longerenong College (LL x RA)
3rd 221 Yanco Agricultural High School (AA)
4th 131 Nagle College (LL)
5th 190 Team H/Rigdale & Parkdale Willows Limousin (LL)

CLASS 3 - Heat 5 - Heavy Domestic

- 1st 16 Billabong High School (LLxAA/LLxAA)
2nd 65 Glenburn Station (SixAA)
3rd 121 Longerenong College (LL x RA)
4th 185 Team H/E.J. Angus/D & C Grylls (AA/SixAA)
5th 25 Chairo Christian School (LL)

CLASS 3 - Heat 6 - Heavy Domestic

- 1st 188 Team H/R & C Nuttall/J & S Nuttall (AAxHH)
2nd 44 Finley High School (GAxAA)
3rd 2 Ashwood Park Charolais (CCxCC/SH)
4th 76 Goulburn Valley Grammar (RA)
5th 202 Wallawong Murray Greys (MG)

CLASS 4 - Heat 1 - Export

- 1st 64 Glenburn Station (AA)
2nd 203 Wallawong Murray Greys & Toqueza Ltd (MG)
3rd 87 B & S Griffiths (LL)
4th 99 Kerang Technical High School (LL)
5th 197 Urrbrae Agricultural High School (CCxSS)

CLASS 4 - Heat 2 - Export

- 1st 21 Black Caviar Steer Syndicate (SixSI/AA)
2nd 68 Glenburn Station (AA)
3rd 1 Ashwood Park Charolais (CCxRA)
4th 70 Glenormiston - South West TAFE (AA)
5th 141 Northern Melbourne Institute of TAFE (CCxAA)

SCHOOL AND COLLEGE AWARDS

MOST SUCCESSFUL SCHOOLS OR COLLEGE EXHIBITOR

THE BOTT-BURSTON TROPHY

Yanco Agricultural High School

CHAMPION SCHOOLS LED STEER OR HEIFER

Exhibit 49, Finley High School, (Limousin)

RESERVE CHAMPION SCHOOLS LED STEER OR HEIFER

Exhibit 16, Billabong High School, (Limousin/Angus x Limousin/Angus)

School (Top 5 placings)	1st 3 points		2nd 2 points		3rd 1 point		Grand Champion 2 points		Champion 3 points		Reserve Champion 2 points		Total
Yanco Agricultural High School	7	21	4	8	4	4	0	0	0	0	1	2	35
Billabong High School	2	6	3	6	2	2	1	2	3	9	1	2	27
Finley High School	4	12	4	8	2	2	0	0	0	0	0	0	22
Longerenong College	3	9	3	6	4	4	0	0	1	3	0	0	22
St Mary of the Angels Nathalia	2	6	2	4	1	1	0	0	1	3	0	0	14

PARTICIPATING SCHOOLS AND COLLEGES

Barham High School
 Billabong High School
 Chairo Christian School
 Emmanuel College
 Finley High School
 Geelong Grammar School Timbertop
 Glenormiston College South West TAFE
 Goulburn Valley Grammar
 Grant High School
 Gundagai High School
 Kerang Technical High School
 Longerenong College

Mortlake P12 College
 Nagle College
 Northern Melbourne Institute of TAFE
 Rural Industry Skill Training
 Rutherglen High School
 St Mary of the Angels Nathalia
 St Pauls College
 The Hamilton & Alexandra School
 Urrbrae Agricultural High School
 Wagga Wagga High School
 Yanco Agricultural High School

SCHOOL AND COLLEGE PARADERS AWARDS

CHAMPION SCHOOL STEER OR HEIFER PARADER

Kate Henne (Northern Melbourne Institute of TAFE)

RESERVE CHAMPION SCHOOL STEER OR HEIFER PARADER

Jessica Crick (Yanco Agricultural High School)

SCHOOL AND COLLEGE PARADERS CLASS RESULTS

CLASS 1

1st	Georgia Nelson	St Mary of the Angels Nathalia
2nd	Holly Jukes	Barham High School
3rd	Michelle Barnes	Finley High School
4th	Harrison Daley	Gundagai High School
HC	Connor McPherson	St Pauls College
C	Joseph Carberry	Gundagai High School

CLASS 2

1st	Troy Kylstra	Yanco Agricultural High School
2nd	Kylie Fairfull	Yanco Agricultural High School
3rd	Lauren Hannaford	St Pauls College
4th	Kaitlin Shannon	Barham High School
HC	Victoria Alexander	Finley High School
C	Emilie Harrison	Finley High School

CLASS 3

1st	Logan Manwarring	Yanco Agricultural High School
2nd	Annie Pumpa	Billabong High School
3rd	Brooke Thomson	Wagga Wagga High School
4th	Thomas Burns	Finley High School
HC	Callum Clayton	Wagga Wagga High School
C	Sophie Anderson	Rutherglen High School)

CLASS 4

1st	Kaitlyn McKay	Yanco Agricultural High School
2nd	Jack Nelson	St Mary of the Angels Nathalia
3rd	Emily Pinnuck	Billabong High School
4th	Nicole Fairley	Yanco Agricultural High School
HC	Vanessa Angel	Wagga Wagga High School
C	Lucy Godde	Billabong High School

CLASS 5

1st	Keilan Webster Bamford	Mortlake P12 College
2nd	Caleb Catena	Finley High School
3rd	Odette Mara	Yanco Agricultural High School
4th	Shinae Harrison	Finley High School
HC	Forest Brain	Finley High School
C	Abbie Hoskin	Finley High School

CLASS 6

1st	Aimee Bolton	Goulburn Valley Grammar
2nd	Alexander Chester	St Mary of the Angels Nathalia
3rd	Alex O'Leary	Finley High School
4th	Billie-Joe Carberry	Gundagai High School
HC	Shelley Talbot	St Pauls College
C	Kiarna Mason	Billabong High School

CLASS 7

1st	Kimberley Henningsen	Grant High School
2nd	James Littlehales	Yanco Agricultural High School
3rd	Will Petersen	Yanco Agricultural High School
4th	Damien Wilson	Finley High School
HC	Teagen Georgeson	Barham High School
C	Hayley Fairfull	Yanco Agricultural High School

CLASS 8

1st	Jack Anthony	Finley High School
2nd	Darcy Booth	Yanco Agricultural High School
3rd	Zoe Howe	Yanco Agricultural High School
4th	Gavin Low	Chairo Christian School
HC	Jess Burrage	Nagle College
C	Gabrielle Robinson	Rutherglen High School

CLASS 9

1st	Nikki Williamson	Finley High School
2nd	Nicole Muller	Grant High School
3rd	Madalan Page	Billabong High School
4th	Paige Williams	Nagle College
HC	Joel Bidley	Chairo Christian School
C	Dan Martin	Rutherglen High School

CLASS 10

1st	Ryan Konzag	Urrbrae Agricultural High School
2nd	Jessica Power	Yanco Agricultural High School
3rd	Courtney Lillard	Urrbrae Agricultural High School
4th	Andrew Thorn	Yanco Agricultural High School
HC	Miles Hunt	Gundagai High School
C	Murray VanderDrift	Kerang Technical High School

CLASS 11

1st	Jessica Johnston	Yanco Agricultural High School
2nd	Kate Redenbach	Nagle College
3rd	Tamyka Schroeter	St Pauls College
4th	Jake Smith	St Pauls College
HC	Jesse Chappell	Nagle College
C	Emma Prescott	Rutherglen High school

CLASS 12

1st	Jessica Crick	Yanco Agricultural High School
2nd	Brandon Sykes	Nagle College
3rd	Rudi McEwin	Urrbrae Agricultural High School
4th	Brittany Henry	Nagle College
HC	Rachael Hirs	Nagle College
C	Inez Mara	Yanco Agricultural High School

CLASS 13

1st	Dianna Branson	The Hamilton & Alexandra College
2nd	April Salzke	Billabong High School
3rd	Harrison Lightbody	Urrbrae Agricultural High School
4th	Matthew Angel	Longerenong College
HC	Stephanie-Jane O'Keefe	Billabong High School
C	Sophie Brewer	RIST

CLASS 14

1st	Erin Amott	Longerenong College
2nd	Hannah Gregory	Urrbrae Agricultural High School
3rd	Dylan Fox	Longerenong College
4th	Kieran Kennedy	Glenormiston SW TAFE
HC	Shannon Peters	Nagle College
C	Angus Barnden	Longerenong College

CLASS 15

1st	Kate Cross	Longerenong College
2nd	Christiaan Condon	Longerenong College
3rd	Katie Gallpen	Longerenong College
4th	Kathleen Cooper	Longerenong College
HC	Larissa Hofstede	Longerenong College
C	Matthew Kirby	Northern Melb Institute of TAFE

CLASS 16

1st	Kate Henne	Northern Melb Institute of TAFE
2nd	Melissa McGowan	Longerenong College
3rd	Timothy Pratten	Northern Melb Institute of TAFE
4th	Kim Cooke	Glenormiston College SW TAFE
HC	Jessica Butcher	Longerenong College
C	Rebecca Dalla	Longerenong College

BEEF CARCASE CHAMPION AWARDS

GRAND CHAMPION CARCASE

Exhibit 13, Billabong High School (South Devon) – 92.690 points
(bred by S & S Hamson)

CHAMPION LIGHT DOMESTIC CARCASE

Exhibit 9, Barham High School (Murray Grey) – 88.600 points
(bred by G & A Martin)

CHAMPION MEDIUM DOMESTIC CARCASE

Exhibit 182, Team H / Alberni Family (Charolais x Shorthorn) – 90.248 points

CHAMPION HEAVY DOMESTIC CARCASE

Exhibit 13, Billabong High School (South Devon) – 92.690 points
(bred by S & S Hamson)

CHAMPION EXPORT CARCASE

Exhibit 114, Longerenong College (Red Angus x Hereford) – 90.433 points

CHAMPION SCHOOLS CARCASE

THE MARCUS OLDHAM COLLEGE TROPHY

Exhibit 13, Billabong High School (South Devon) – 92.690 points
(bred by S & S Hamson)

HIGHEST SCORING SCHOOL BRED AND PREPARED CARCASE

THE NORTHERN MELBOURNE INSTITUTE OF TAFE TROPHY

Exhibit 114, Longerenong College (Red Angus x Hereford) – 90.433 points

CLARK RUBBER STEER BONANZA

1st Exhibit 49, Finley High School (Limousin) – 90.09 points
(bred by B & S Griffiths)

2nd Exhibit 102, Kerang Technical High School (Limousin x Angus) – 90.048 points
(bred by A & M Van Der Drift)

3rd Exhibit 155, Rural Industry Skill Training (Blonde d'Aquitaine x Brangus) – 89.626 points
(bred by Corumbene Brangus)

THE BORTHWICK TROPHY

AWARDED TO

LIMOUSIN

Exhibit 120, Longerenong College, 89.152 points

Exhibit 97, Kerang Technical High School, 86.867 points

Exhibit 49, Finley High School, 90.090 points

Place	Breed	Exhibit Numbers		
		1	2	3
1	Limousin	120	97	49
2	Simmental	85	48	198
3	Murray Grey	203	172	211
4	Charolais	111	40	5
5	South Devon	73	74	75
6	Red Angus	108	76	77
7	Angus	68	64	193
8	Shorthorn	195	229	228
9	Australian Lowline	123	105	169
10	Hereford	127	130	43
11	Welsh Black	156	157	158
12	Red Poll	10	31	72

Live Score	Carcass Points			Carcass Total	Grand Total
	1	2	3		
95	89.152	86.867	90.090	266	361.109
85	85.940	89.195	83.612	259	343.747
90	87.200	76.865	84.319	248	338.384
85	79.719	85.371	87.677	253	337.767
85	83.690	87.938	78.433	250	335.061
90	79.463	81.362	82.942	244	333.767
95	79.008	80.554	72.667	232	327.229
85	83.880	77.681	78.677	240	325.238
85	75.586	81.345	78.861	236	320.792
85	80.844	79.393	74.201	234	319.438
85	72.683	75.787	82.219	231	315.689
85	69.809	71.349	72.662	214	298.820

HISTORICAL WINNERS OF THE BORTHWICK TROPHY

1953 Angus	1968 Angus	1983 Hereford	1998 Shorthorn
1954 Angus	1969 Poll Shorthorn	1984 Angus	1999 Angus
1955 Angus	1970 Poll Shorthorn	1985 Poll Hereford	2000 Murray Grey
1956 Hereford	1971 Hereford	1986 Angus	2001 Shorthorn
1957 Angus	1972 Murray Grey	1987 Angus	2002 Shorthorn
1958 Angus	1973 Murray Grey	1988 Angus	2003 Shorthorn
1959 Angus	1974 Angus	1989 Angus	2004 Murray Grey
1960 Poll Hereford	1975 Murray Grey	1990 Murray Grey	2005 Charolais
1961 Angus	1976 Murray Grey	1991 Charolais	2006 Charolais
1962 Poll Hereford	1977 Murray Grey	1992 Charolais	2007 Charolais
1963 Angus	1978 Galloway	1993 Murray Grey	2008 Limousin
1964 Angus	1979 Galloway	1994 Murray Grey	2009 Limousin
1965 Angus	1980 Galloway	1995 Murray Grey	2010 Simmental
1966 Angus	1981 Murray Grey	1996 Murray Grey	2011 Limousin
1967 Murray Grey	1982 Angus	1997 Hereford	2012 Limousin

CELEBRATING 60 YEARS OF THE BORTHWICK TROPHY

CHAMPION LIGHT DOMESTIC CARCASE

Exhibit 9, Barham High School (Murray Grey) – 88.600 points
(bred by G & A Martin)

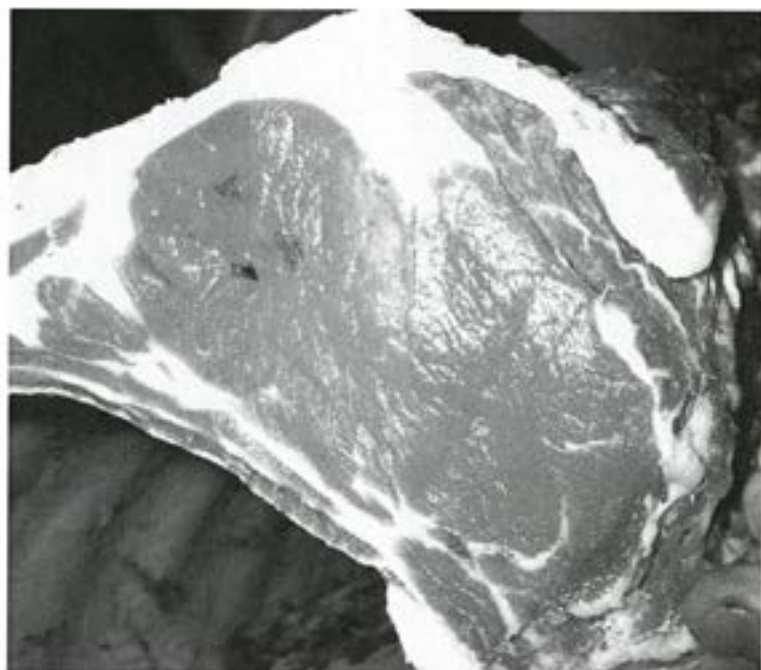
**CHAMPION MEDIUM DOMESTIC CARCASE**

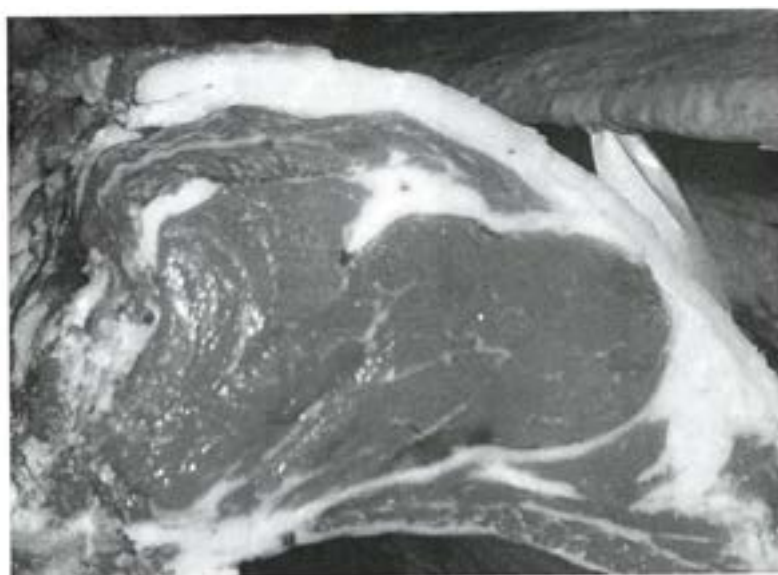
Exhibit 182, Team H / Alberni Family (Charolais x Shorthorn) – 90.248 points



Please note colours in photos may not give a true representation of actual colour.
Holes in eye muscle are due to the thermometer and electrode during pH testing.

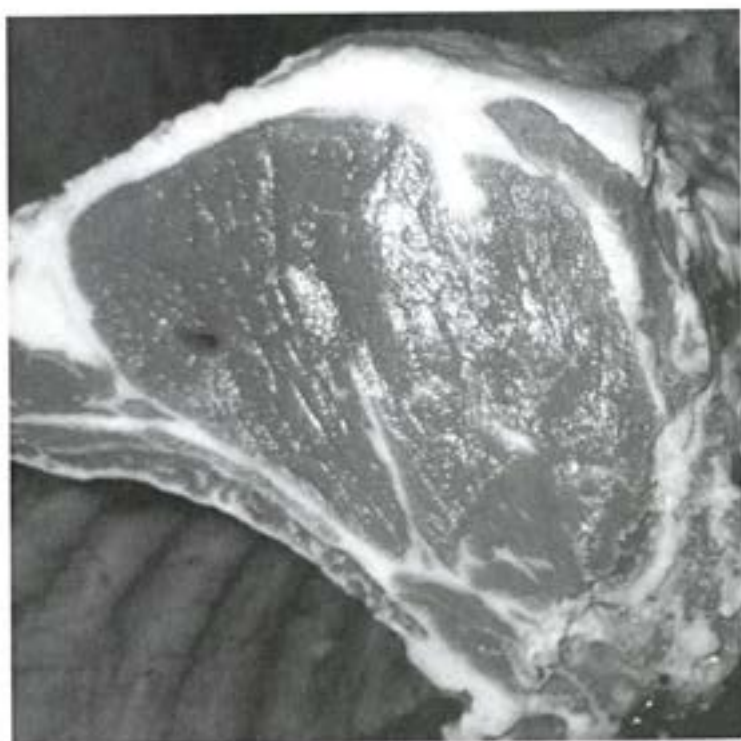
CHAMPION HEAVY DOMESTIC & GRAND CHAMPION CARCASS

Exhibit 13, Billabong High School (South Devon) – 92.690 points
(bred by S & S Hamson)



CHAMPION EXPORT CARCASS

Exhibit 114, Longerenong College (Red Angus x Hereford) – 90.433 points



Please note colours in photos may not give a true representation of actual colour.
Holes in eye muscle are due to the thermometer and electrode during pH testing.

ROYAL MELBOURNE SHOW CARCASE COMPETITION 2012

Competition Date: 24/09/2012

Quarterming Site: 10-11 Rib

Class: 1 - A - Light Domestic - Weight 100 - 180 Kg

Body	Tag ID	Market	Live Weight	HSCW	Dress	Breed Type	Exhibitor Details	P8 Fat (mm) / 10	MC 1a-7 / 5	FC Value / 5	DIST / 5	Penalty	Total / 20	RFT (mm) / 15	EMA sq / 20	Total / 35	TBC	Sex	Hump	OSS	AUS MB	MSA MB	pH	Total / 45	Grand				
9		A	325	179	55%	MG	Barham High School	10	6	1C	5	1	4.5	0	15.5	6	15.0	69	20.0	35.0	0	M	50	100	1.0	370	5.53	38.100	88.600
187		A	308	170	55%	AA	Team H/E J Angus / D & C Grylls	8	10	1C	5	1	4	0	19.0	4	15.0	63	18.1	33.1	0	M	50	100	0.0	200	5.56	36.248	88.388
170		A	292	175	60%	CB	St Mary of The Angels College	8	10	3	2	0	2.5	0	14.5	6	15.0	67	19.9	34.9	38	M	65	100	1.0	300	5.60	37.329	84.774
28		A	343	174	51%	MG	Chairo Christian School	5	10	1B	5	1	2.5	0	17.5	3	10.0	64	18.3	28.3	0	M	55	100	0.0	250	5.51	36.648	82.489
105		A	291	154	53%	AL	Mrs J Knight	9	8	2	4	1	3	0	15.0	7	13.0	56	15.6	28.6	0	M	45	100	1.0	320	5.54	37.705	81.345
169		A	321	164	51%	AL	St Mary of The Angels College	10	6	2	4	1	3.5	0	13.5	4	15.0	55	14.2	29.2	0	M	50	120	1.0	340	5.54	36.195	78.861
83		A	258	140	54%	AL	Grant High School	9	8	2	4	1	2.5	0	14.5	4	15.0	51	14.1	29.1	0	M	45	120	0.0	220	5.50	34.157	77.745
123		A	308	169	55%	AL	K & G Lorains	10	6	2	4	1	3	0	13.0	5	15.0	50	10.9	25.9	0	M	50	110	1.0	300	5.57	36.700	75.586

DisclaimerLegend

Should an operator of the ABCAS competition model utilise the "spare" market category, and compile score results that differ to the default options, MSA will not assume responsibility for complaints relating to competition results.

*Market Specifications

P8 Fat - P8 Fat (mm)
 MC - Meat Colour (1a - 7)
 FC - Fat Colour (0 - 8)
 DIST - Fat Distribution (1 - 5)

** Saleable Meat Yield

RFT - Rib Fat (mm)
 EMA - Eye Muscle Area (sq cm)

*** MSA - Eating QualityMSA Specification

TBC - Tropical Breed Content (%)
 Sex - Male or Female (M/F)
 Hump - Hump Height (mm)
 OSS - Ossification (100 - 590)
 AUSMB - AusMeat Marbling (0 - 9)
 MSAMB - MSA Marbling (100 - 1100)
 pH - Meat pH

To receive eating quality points, carcasses must meet minimum MSA specifications.
 Reasons carcasses receive no points:

1. Rib Fat less than 3mm
2. Fat Distribution inadequate
3. pH above 5.7
4. Meat Colour of 1a or greater than 3

22 BEEF CARCASE RESULTS

ROYAL MELBOURNE SHOW CARCASE COMPETITION 2012

Competition Date: 24/09/2012

Quarterming Site: 10-11 Rib

Class: 2 - B - Medium Domestic - Weight 180.1 - 240 Kg

Body	Tag ID	Market	Live Weight	HSCW	Dress	Breed Type	Exhibitor Details	P8 Fat (mm) / 10	MC 1a-7 / 5	FC Value	DIST / 5	Penalty	Total / 20	RFT (mm) / 15	EMA sq / 20	Total / 35	TBC	Sex	Hump	OSS	AUS MB	MSA MB	pH	Total / 45	Grand			
182	B	411	233	57%	CCxSS	Team H / Alberni Family	9	10	1C	5	0	3.5	0	18.5	5	15.0	81	20.0	35.0	0	M	55	100	0.0	250	5.58	36.748	90.248
49	B	385	209	54%	LL	Finley High School	9	10	1C	5	1	2.5	0	17.5	5	15.0	73	20.0	35.0	0	M	45	100	0.0	320	5.48	37.590	90.090
27	B	395	237	60%	LL	Chairo Christian School	8	10	1C	5	1	2.5	0	17.5	6	15.0	85	20.0	35.0	0	M	60	100	0.0	250	5.56	36.781	89.281
86	B	390	237	61%	LL	B & S Griffiths	6	10	1C	5	1	2.5	0	17.5	5	15.0	93	20.0	35.0	0	M	60	100	0.0	210	5.65	36.414	88.914
3	B	394	225	57%	CC	Ashwood Park Charolais	5	9	1B	5	1	2.5	0	16.5	5	15.0	78	20.0	35.0	0	M	65	100	1.0	340	5.61	37.400	88.900
24	B	376	232	62%	LLxLL	Chairo Christian School	8	10	1B	5	0	2	0	17.0	5	15.0	95	20.0	35.0	0	M	60	100	0.0	250	5.50	36.757	88.757
53	B	443	227	51%	SPxMG	Geelong Grammar School Timbertop	7	10	1C	5	1	3.5	0	18.5	7	15.0	68	15.8	30.8	0	M	60	100	2.0	430	5.57	39.352	88.636
5	B	430	226	53%	CC	Ashwood Park Charolais	5	9	1C	5	0	2.5	0	16.5	7	15.0	72	18.1	33.1	0	M	60	100	1.0	350	5.55	38.043	87.677
149	B	412	221	54%	MG	Powe Family	10	10	2	4	1	3.5	0	17.5	7	15.0	70	17.5	32.5	0	M	60	100	1.0	310	5.52	37.671	87.631
50	B	395	215	54%	CCxMG	Geelong Grammar School Timbertop	8	10	1B	5	2	3	0	18.0	5	15.0	75	20.0	35.0	0	F	50	130	0.0	280	5.62	34.176	87.176
201	B	413	228	55%	SS	Wagga Wagga High School	8	10	1C	5	1	3	0	18.0	7	15.0	68	15.7	30.7	0	M	60	120	2.0	410	5.53	37.419	86.112
210	B	410	233	57%	MG	Williams River / Richardson	11	8	2	4	0	2.5	0	14.5	7	15.0	73	18.1	33.1	0	M	45	110	1.0	340	5.63	37.371	84.935
8	B	434	232	53%	PH	Barham High School	9	10	1C	5	1	3	0	18.0	7	15.0	68	15.3	30.3	0	M	65	100	0.0	210	5.54	36.576	84.905
19	B	348	196	56%	SPxAL	Billabong High School	10	10	1C	5	0	3.5	0	18.5	6	15.0	61	14.6	29.6	0	M	55	120	1.0	330	5.62	36.500	84.647
211	B	392	226	58%	MG	Williams River / Richardson	9	10	2	4	1	3	0	17.0	5	15.0	70	17.0	32.0	0	M	60	130	1.0	310	5.51	35.314	84.319
67	B	348	198	57%	MG	Glenburn Station	10	10	1B	5	1	3.5	0	18.5	6	15.0	61	14.5	29.5	0	M	50	110	0.0	240	5.54	36.076	84.041
59	B	419	220	53%	AAxMG	Geelong Grammar School Timbertop	10	10	1C	5	1	3.5	0	18.5	7	15.0	63	13.6	28.6	0	M	55	110	1.0	320	5.48	36.867	83.962
195	B	325	188	56%	SS	Tippetts Glengyron	7	10	1C	5	0	3	0	18.0	4	12.0	63	16.5	28.5	0	M	50	110	1.0	360	5.49	37.376	83.880
73	B	435	238	55%	SD	Glenormiston - South West TAFE	12	6	1C	5	3	4	0	15.0	10	11.0	81	20.0	31.0	0	M	60	100	0.0	300	5.59	37.690	83.690
146	B	434	230	53%	MG	Onward Murray Greys	10	10	2	4	2	3	0	17.0	7	15.0	70	16.6	31.6	0	M	55	120	0.0	230	5.46	34.700	83.341
196	B	376	221	59%	SS	Tippetts Glengyron	9	10	2	4	2	3	0	17.0	4	12.0	72	18.6	30.6	0	M	65	120	1.0	300	5.56	35.686	83.275

BEEF CARCASE RESULTS 23

Class: 2 - B - Medium Domestic - Weight 180.1 - 240 Kg (continued)

Body	Tag ID	Market	Live Weight	HSCW	Dress	Breed Type	Exhibitor Details	P&F Fat (mm) / 10	MC 1a-7 / 5	FC Value	DIST / 5	Penalty	Total / 20	RFT (mm) / 15	EMA sq / 20	Total / 35	TBC	Sex	Hump	OSS	AUS MB	MSA MB	pH	Total / 45	Grand				
77		B	427	232	54%	RA	Goulburn Valley Grammar	13	4	1B	5	1	3	0	12.0	6	15.0	69	15.9	30.9	0	M	60	100	3.0	530	5.68	40.048	82.942
183		B	402	229	57%	CCxSS	Team H / Alberni Family	7	10	1C	5	2	3	0	18.0	3	8.0	75	19.6	27.6	0	M	55	100	1.0	350	5.67	37.381	82.938
52		B	370	193	52%	MG	Geelong Grammar School Timbertop	8	10	2	4	0	3	0	17.0	5	15.0	57	12.7	27.7	0	M	60	100	1.0	340	5.66	37.400	82.060
161		B	438	232	53%	ALxPH	Mrs L Senger	9	10	3	2	1	3.5	0	15.5	6	15.0	67	14.8	29.8	0	M	50	140	2.0	450	5.48	36.614	81.878
58		B	406	221	54%	AAxMG	Geelong Grammar School Timbertop	5	9	1C	5	1	3	0	17.0	5	15.0	62	12.9	27.9	0	M	65	100	0.0	280	5.62	36.810	81.749
209		B	419	229	55%	MG	Williams River Cattle Co	13	4	1B	5	1	3.5	0	12.5	8	15.0	67	15.0	30.0	0	M	55	100	2.0	400	5.43	39.186	81.723
186		B	337	190	56%	AA	Team H/E j Angus / D & C Grylls	8	10	1C	5	1	2.5	0	17.5	4	12.0	59	14.1	26.1	0	M	55	100	1.0	300	5.48	37.343	80.905
119		B	389	229	59%	LL	Longerenong College	4	7	2	4	2	2.5	0	13.5	4	12.0	80	20.0	32.0	0	M	65	100	0.0	160	5.54	34.619	80.119
207		B	390	216	55%	MG	Wattlewood & H C Glover & Son	10	10	1C	5	0	3	0	18.0	8	15.0	54	8.9	23.9	0	M	60	100	1.0	370	5.57	38.152	80.026
88		B	363	215	59%	LL	B & S Griffiths	9	10	1C	5	1	2.5	0	17.5	3	8.0	81	20.0	28.0	0	M	60	110	0.0	200	5.55	34.186	79.686
38		B	438	233	53%	SS	Finley High School	9	10	2	4	1	3	0	17.0	10	11.0	67	14.7	25.7	0	M	55	110	1.0	300	5.64	36.843	79.516
35		B	348	199	57%	HH	Emmanuel College Inc	4	7	2	4	0	3	0	14.0	3	8.0	73	20.0	28.0	0	M	55	100	1.0	330	5.51	37.367	79.367
29		B	412	220	53%	AA	Claidhemh Organic Beef	9	10	2	4	3	3	0	17.0	3	8.0	71	18.1	26.1	0	M	65	110	0.0	290	5.58	35.824	78.939
154		B	328	185	56%	AAxBG	Rural Industry Skill Training	6	10	2	4	1	2.5	0	16.5	3	8.0	66	18.5	26.5	19	M	50	110	1.0	340	5.60	36.743	78.715
168		B	331	193	58%	CCxSG	St Mary of The Angels College	5	9	1B	5	1	2	0	16.0	3	8.0	74	20.0	28.0	0	M	65	100	0.0	190	5.52	34.662	78.662
23		B	428	222	52%	MG	Mr & Mrs I & A Burnside	11	8	1C	5	2	4	0	17.0	11	9.0	63	13.4	22.4	0	M	50	110	2.0	450	5.53	39.238	78.651
147		B	427	226	53%	AAxMG	Miss J Parker	11	8	1B	5	1	3	0	16.0	8	15.0	57	9.7	24.7	0	M	60	100	1.0	330	5.56	37.967	78.626
17		B	350	193	55%	SPxAL	Billabong High School	10	10	2	4	1	2	0	16.0	4	12.0	58	13.2	25.2	0	M	60	120	2.0	400	5.57	36.786	78.010
54		B	354	185	52%	MG	Geelong Grammar School Timbertop	6	10	1C	5	1	3	0	18.0	4	12.0	53	11.1	23.1	0	M	50	100	0.0	250	5.42	36.710	77.836
208		B	381	214	56%	MG	Williams River Cattle Co	10	10	1B	5	1	3	0	18.0	10	11.0	63	14.1	25.1	0	F	50	140	1.0	300	5.49	34.505	77.645
56		B	420	227	54%	AAxMG	Geelong Grammar School Timbertop	6	10	1C	5	2	3.5	0	18.5	8	15.0	54	7.9	22.9	0	M	60	120	0.0	290	5.54	36.129	77.502
69		B	434	240	55%	AAXGA	Glenburn Station	14	2	1C	5	2	3	0	10.0	8	15.0	67	14.0	29.0	0	M	60	130	3.0	570	5.61	38.224	77.261
55		B	436	219	50%	MG	Geelong Grammar School Timbertop	15	0	3	2	1	4	0	6.0	8	15.0	71	18.2	33.2	0	M	55	100	1.0	350	5.64	38.038	77.244

24 BEEF CARCASE RESULTS

Class: 2 - B - Medium Domestic - Weight 180.1 - 240 Kg (continued)

Body	Tag ID	Market	Live Weight	HSCW	Dress	Breed Type	Exhibitor Details	P8 Fat (mm) / 10	MC 1a-7 / 5	FC Value	DIST / 5	Penalty	Total / 20	RFT (mm) / 15	EMA sq / 20	Total / 35	TBC	Sex	Hump	OSS	AUS MB	MSA MB	pH	Total / 45	Grand
172		B	403	234	58%	MG	St Pauls College	8 10	1B 5	1 3.5	0	18.5	10 11.0	60 10.6	21.6	0	M	60	100	0.0	220	5.58	36.738	76.865	
30		B	436	228	52%	AA	Claidhernh Organic Beef	10 10	3 2	2 3	0	15.0	6 15.0	59 10.6	25.6	0	M	55	130	1.0	340	5.64	35.786	76.393	
33		B	382	215	56%	HH	Emmanuel College Inc	8 10	2 4	1 2.5	0	16.5	4 12.0	62 13.5	25.5	0	M	55	120	0.0	210	5.62	34.143	76.127	
34		B	409	231	56%	AA	Emmanuel College Inc	5 9	2 4	1 3	0	16.0	3 8.0	65 13.7	21.7	0	M	60	110	1.0	370	5.65	36.829	74.554	
51		B	397	209	53%	MG	Geelong Grammar School Timbertop	13 4	1C 5	1 3	0	12.0	7 15.0	54 9.5	24.5	0	M	55	110	1.0	350	5.54	37.390	73.900	
4		B	327	187	57%	CC	Ashwood Park Charolais	6 10	1C 5	1 2.5	0	17.5	3 8.0	53 10.9	18.9	0	M	50	110	2.0	400	5.59	37.410	73.855	
148		B	392	232	59%	MG	Miss J Parker	14 2	3 2	0 3	0	7.0	8 15.0	66 14.2	29.2	0	M	55	120	1.0	320	5.55	36.667	72.866	
7		B	430	239	56%	PHXAA	Barham High School	14 2	2 4	1 3.5	0	9.5	7 15.0	60 10.2	25.2	0	M	70	110	2.0	400	5.62	37.433	72.106	
31		B	430	231	54%	RP	R Draper	12 6	2 4	3 3.5	0	13.5	11 9.0	62 12.0	21.0	0	M	50	110	0.0	280	5.54	36.819	71.349	
10		B	421	218	52%	RP	Barham High School	16 0	2 4	1 3.5	0	7.5	7 15.0	55 9.3	24.3	0	M	55	100	1.0	350	5.48	38.052	69.809	
37		B	441	233	53%	AAXCC	Finley High School	14 2	2 4	0 3.5	0	9.5	10 11.0	60 10.7	21.7	0	F	55	170	4.0	640	5.61	36.638	67.856	
11		B	356	209	59%	BG	Barham High School	7 10	2 4	2 2.5	0	16.5	3 8.0	53 8.9	16.9	38	M	70	110	0.0	250	5.55	34.805	67.250	
219		B	378	222	59%	LL	Yanco Agricultural High School	6 10	6 0	2 2.5	0	12.5	2 4.0	72 18.5	22.5	0	M	60	100	0.0	210	6.08	0.000	34.998	
32		B	380	210	55%	AA	Emmanuel College Inc	7 10	4 1	2 2.5	0	13.5	2 4.0	59 12.2	16.2	0	M	55	130	0.0	250	5.77	0.000	29.744	

Disclaimer Legend

Should an operator of the ABCAS competition model utilise the "spare" market category, and compile score results that differ to the default options, MSA will not assume responsibility for complaints relating to competition results.

*Market Specifications

P8 Fat - P8 Fat (mm)
MC - Meat Colour (1a - 7)
FC - Fat Colour (0 - 8)
DIST - Fat Distribution (1 - 5)

** Saleable Meat Yield

RFT - Rib Fat (mm)
EMA - Eye Muscle Area (sq cm)

*** MSA - Eating Quality MSA Specification

TBC - Tropical Breed Content (%)
Sex - Male or Female (M/F)
Hump - Hump Height (mm)
OSS - Ossification (100 - 590)
AUSMB - AusMeat Marbling (0 - 9)
MSAMB - MSA Marbling (100 - 1100)
pH - Meat pH

To receive eating quality points, carcasses must meet minimum MSA specifications. Reasons carcasses receive no points:

1. Rib Fat less than 3mm
2. Fat Distribution inadequate
3. pH above 5.7
4. Meat Colour of 1a or greater than 3

ROYAL MELBOURNE SHOW CARCASS COMPETITION 2012

Competition Date: 24/09/2012

Quarterming Site: 10-11 Rib

Class: 3 - C - Heavy Domestic - Weight 240.1 - 300 Kg

Body	Tag ID	Market	Live Weight	HSCW	Dress	Breed Type	Exhibitor Details	PB Fat (mm) / 10	MC 1a-7 / 5	FC Value	DIST / 5	Penalty	Total / 20	RFT (mm) / 15	EMA sq / 20	Total / 35	TBC	Sex	Hump	OSS	AUS MB	MSA MB	pH	Total / 45	Grand				
13		C	500	272	54%	SD	Billabong High School	10	10	1C	5	2	3.5	0	18.5	7	15.0	84	20.0	35.0	0	M	60	100	2.0	410	5.59	39.190	92.690
135		C	440	257	58%	BAA	Nagle College	9	10	1B	5	1	2.5	0	17.5	10	15.0	82	20.0	35.0	0	M	70	100	1.0	360	5.44	38.105	90.605
45		C	452	251	56%	AA	Finley High School	15	6	1C	5	0	4	0	15.0	7	15.0	81	20.0	35.0	0	M	60	100	3.0	520	5.58	40.095	90.095
102		C	528	299	57%	LLAA	Kerang Technical High School	13	10	2	4	1	3	0	17.0	8	15.0	90	20.0	35.0	0	M	50	100	1.0	350	5.54	38.048	90.048
62		C	466	276	59%	LLLL	B & A Gill	10	10	1C	5	1	2.5	0	17.5	7	15.0	88	20.0	35.0	0	M	50	110	1.0	340	5.53	37.376	89.876
155		C	450	245	54%	BLxBG	Rural Industry Skill Training	10	10	1C	5	0	3	0	18.0	8	15.0	75	18.1	33.1	25	F	50	120	1.0	330	5.55	38.524	89.626
103		C	477	262	55%	LLxMG	Kerang Technical High School	13	10	1C	5	0	3	0	18.0	7	15.0	82	20.0	35.0	0	M	60	120	1.0	310	5.59	36.514	89.514
214		C	424	251	59%	LLxMG	Williams River Cattle/T&J Morton	10	10	1C	5	1	3	0	18.0	8	15.0	84	20.0	35.0	0	M	60	100	0.0	180	5.48	36.376	89.376
213		C	456	266	58%	LLxMG	Williams River Cattle/T&J Morton	10	10	2	4	0	4	0	18.0	9	15.0	80	19.0	34.0	0	M	65	120	1.0	370	5.53	37.357	89.375
120		C	447	269	60%	LL	Longerenong College	12	10	2	4	2	2.5	0	16.5	7	15.0	93	20.0	35.0	0	M	60	100	1.0	310	5.54	37.652	89.152
137		C	405	293	59%	BAA	Northern Melb. Institute of TAFE	10	10	1B	5	2	3.5	0	18.5	11	13.0	87	20.0	33.0	0	M	65	110	1.0	370	5.60	37.448	88.948
224		C	468	277	59%	LL	Yanco Agricultural High School	9	10	1C	5	0	2.5	0	17.5	7	15.0	83	19.7	34.7	0	M	60	120	1.0	330	5.64	36.652	88.866
15		C	464	276	59%	LL	Billabong High School	10	10	1C	5	0	2.5	0	17.5	6	15.0	81	18.7	33.7	0	M	65	100	1.0	330	5.56	37.667	88.841
212		C	471	273	58%	LLxMG	Williams River Cattle/T&J Morton	10	10	1C	5	0	3	0	18.0	6	15.0	85	20.0	35.0	0	M	60	130	1.0	330	5.60	35.781	88.781
140		C	506	292	58%	BAAxHH	Northern Melb. Institute of TAFE	11	10	1C	5	1	4	0	19.0	10	15.0	80	16.7	31.7	0	M	60	100	1.0	320	5.50	37.995	88.650
175		C	500	284	57%	SixAA	St Pauls College	7	9	1C	5	1	3	0	17.0	7	15.0	82	18.5	33.5	0	M	50	110	2.0	430	5.50	38.105	88.617
12		C	417	245	59%	LL	Billabong High School	10	10	1C	5	1	2.5	0	17.5	6	15.0	78	19.8	34.8	0	M	45	100	0.0	190	5.44	36.319	88.616
2		C	518	290	56%	CCxCC	Ashwood Park Charolais	13	10	2	4	1	3.5	0	17.5	8	15.0	82	18.0	33.0	0	M	55	140	3.0	580	5.62	38.143	88.609
93		C	472	276	58%	LL	Kerang Technical High School	6	8	1C	5	0	3	0	16.0	6	15.0	88	20.0	35.0	0	M	60	100	1.0	310	5.57	37.376	88.376
199		C	494	275	56%	CCxHH	Wagga Wagga High School	8	10	2	4	2	2.5	0	16.5	9	15.0	84	20.0	35.0	0	M	60	120	1.0	360	5.45	36.843	88.343
26		C	402	243	60%	LL	Chairo Christian School	8	10	2	4	1	2.5	0	16.5	7	15.0	80	20.0	35.0	0	M	60	120	1.0	350	5.55	36.757	88.257

Class: 3 - C - Heavy Domestic - Weight 240.1 - 300 Kg (continued)

26 BEEF CARCASE RESULTS

Body	Tag ID	Market	Live Weight	HSCW	Dress	Breed	Exhibitor	Details	P8 Fat (mm) / 10	MC 1a-7 / 5	FC Value	DIST / 5	Penalty	Total / 20	RFT (mm) / 15	EMA sq / 20	Total / 35	TBC	Sex	Hump	OSS	AUS MB	MSA MB	pH	Total / 45	Grand				
132		C	446	252	57%	BVxMG	Nagle College		10	10	1C	5	1	3.5	0	18.5	10	15.0	70	14.6	29.6	0	M	60	100	2.0	450	5.49	39.995	88.136
173		C	469	269	57%	SixAA	St Pauls College		10	10	1C	5	1	3	0	18.0	7	15.0	77	17.1	32.1	0	M	60	110	2.0	430	5.61	38.067	88.117
74		C	472	243	51%	SD	Glenormiston - South West TAFE		10	10	2	4	2	3.5	0	17.5	8	15.0	71	16.0	31.0	0	M	55	100	2.0	440	5.61	39.414	87.938
109		C	538	299	56%	RAxHH	Longerenong College		9	10	1C	5	0	3	0	18.0	5	13.0	88	20.0	33.0	0	M	65	110	1.0	340	5.55	36.876	87.876
122		C	460	291	63%	LL	Longerenong College		8	10	2	4	2	3	0	17.0	6	15.0	100	20.0	35.0	0	M	70	120	10.0	280	5.62	35.710	87.710
221		C	476	268	56%	AA	Yanco Agricultural High School		14	8	1B	5	1	4	0	17.0	7	15.0	79	18.3	33.3	0	M	60	120	1.0	370	5.61	36.810	87.081
131		C	470	286	61%	LL	Nagle College		12	10	1B	5	0	3	0	18.0	9	15.0	82	18.3	33.3	0	M	60	130	0.0	280	5.46	35.548	86.878
134		C	480	296	62%	LL	Nagle College		14	8	2	4	1	3	0	15.0	10	15.0	94	20.0	35.0	0	M	65	130	1.0	380	5.58	36.767	86.767
222		C	518	291	56%	AAxSS	Yanco Agricultural High School		10	10	1C	5	2	3	0	18.0	8	15.0	78	15.6	30.6	0	M	60	100	1.0	350	5.58	38.038	86.654
133		C	472	267	57%	RAxSI	Nagle College		10	10	2	4	2	2.5	0	16.5	9	15.0	74	15.5	30.5	0	M	60	100	2.0	430	5.56	39.414	86.452
63		C	534	297	56%	AA	Glenburn Station		14	8	2	4	1	3.5	0	15.5	10	15.0	80	16.2	31.2	0	M	55	110	3.0	520	5.58	39.471	86.171
18		C	418	243	58%	LL	Billabong High School		10	10	1C	5	0	3	0	18.0	5	13.0	98	20.0	33.0	0	F	60	130	1.0	300	5.56	35.024	86.024
191		C	444	256	58%	SD	Team H / The Bend South Devons		6	8	2	4	2	3	0	15.0	10	15.0	80	19.9	34.9	0	M	55	130	1.0	320	5.62	36.024	85.951
85		C	508	299	59%	SI	Grant High School		10	10	2	4	2	3	0	17.0	9	15.0	81	16.6	31.6	0	M	65	130	2.0	430	5.65	37.357	85.940
117		C	472	274	56%	LLxRA	Longerenong College		11	10	1C	5	0	3	0	18.0	11	13.0	77	16.6	29.6	0	M	60	100	1.0	360	5.55	38.162	85.758
124		C	457	256	56%	SS	McKay Bros		10	10	1B	5	1	3	0	18.0	9	15.0	73	16.0	31.0	0	M	65	110	0.0	240	5.51	36.562	85.534
192		C	538	299	56%	SD	Team H / The Bend South Devons		10	10	2	4	1	4	0	18.0	6	15.0	81	16.6	31.6	0	M	60	130	1.0	350	5.65	35.876	85.459
40		C	461	268	58%	CC	Finley High School		8	10	1C	5	1	3	0	18.0	4	10.0	86	20.0	30.0	0	M	65	100	1.0	320	5.49	37.371	85.371
95		C	449	273	61%	LL	Kerang Technical High School		7	9	1C	5	1	3	0	17.0	5	13.0	88	20.0	33.0	0	M	65	100	0.0	180	5.56	35.357	85.357
177		C	564	291	52%	AA	Miss L Stewart		10	10	1C	5	1	4	0	19.0	9	15.0	72	12.2	27.2	0	M	60	120	3.0	570	5.56	38.705	84.930
104		C	464	270	58%	LL	Kerang Technical High School		8	10	1C	5	0	2.5	0	17.5	4	10.0	87	20.0	30.0	0	M	65	100	1.0	330	5.52	37.386	84.886
230		C	425	249	59%	HH	Finley High School		10	10	2	4	2	3	0	17.0	6	15.0	74	17.2	32.2	0	M	60	130	1.0	300	5.62	35.295	84.469
176		C	466	255	55%	AAxHH	St Pauls College		10	10	1C	5	1	3.5	0	18.5	6	15.0	68	13.2	28.2	0	M	65	100	1.0	320	5.60	37.600	84.338

BEEF CARCASE RESULTS 27

Class: 3 - C - Heavy Domestic - Weight 240.1 - 300 Kg (continued)

Body	Tag ID	Market	Live Weight	HSCW	Dress	Breed Type	Exhibitor Details	P8 Fat (mm) / 10	MC 1a-7 / 5	FC Value	DIST / 5	Penalty	Total / 20	RFT (mm) / 15	EMA sq / 20	Total / 35	TBC	Sex	Hump	OSS	AUS MB	MSA MB	pH	Total / 45	Grand				
60		C	473	294	62%	LL	B & A Gill	5	7	1C	5	1	2.5	0	14.5	5	13.0	94	20.0	33.0	0	M	60	100	0.0	260	5.47	36.790	84.290
84		C	484	256	55%	MG	Grant High School	10	10	1B	5	1	4	0	19.0	8	15.0	69	13.7	28.7	0	M	55	110	0.0	230	5.51	36.419	84.131
205		C	455	257	56%	MG	Wattlewood & H C Glover & Son	7	9	2	4	1	3	0	16.0	8	15.0	71	14.8	29.8	0	M	55	130	3.0	520	5.56	38.224	83.975
25		C	496	297	60%	LL	Chairo Christian School	14	8	2	4	2	2.5	0	14.5	5	13.0	101	20.0	33.0	0	M	70	100	0.0	200	5.52	36.376	83.876
44		C	516	298	58%	GAXAA	Finley High School	14	8	3	2	1	3.5	0	13.5	9	15.0	83	17.8	32.8	0	M	60	130	2.0	450	5.51	37.457	83.761
185		C	504	277	55%	AAxSI	Team H/E J Angus / D & C Grylls	8	10	1C	5	3	2.5	0	17.5	6	15.0	72	13.5	28.5	0	M	55	100	1.0	340	5.60	37.681	83.679
198		C	532	299	56%	SI	Urrbrae Agricultural High School	13	10	3	2	1	3	0	15.0	5	13.0	84	18.3	31.3	0	M	60	130	2.0	450	5.62	37.333	83.612
160		C	524	278	53%	AA	Rutherglen High School	11	10	1C	5	1	3.5	0	18.5	5	13.0	73	14.0	27.0	0	M	60	100	1.0	380	5.56	38.029	83.501
6		C	474	268	57%	MG	B C & E M Atkins	10	10	2	4	1	3	0	17.0	10	15.0	72	14.3	29.3	0	M	55	120	1.0	300	5.56	36.624	82.940
200		C	506	281	56%	AA	Wagga Wagga High School	9	10	1C	5	2	3	0	18.0	5	13.0	77	16.0	29.0	0	M	60	130	1.0	350	5.58	35.852	82.812
153		C	417	251	60%	LL	Rural Industry Skill Training	5	7	1C	5	0	2	0	14.0	6	15.0	82	20.0	35.0	0	F	55	140	0.0	250	5.46	33.681	82.681
164		C	530	298	56%	SI	Six Four C	9	10	2	4	2	2.5	0	16.5	4	10.0	86	19.5	29.5	0	M	60	130	2.0	400	5.55	36.529	82.528
206		C	436	243	56%	MG	Wattlewood & H C Glover & Son	11	10	1C	5	1	3	0	18.0	9	15.0	63	11.5	26.5	0	M	60	120	2.0	440	5.49	37.981	82.485
90		C	444	245	55%	AA	Gundagai High School	10	10	2	4	2	3	0	17.0	9	15.0	66	13.0	28.0	0	M	60	110	1.0	340	5.56	37.390	82.408
189		C	488	277	57%	LLxAA	Team H / Rigdale & Parkdale Willows	8	10	1C	5	2	2.5	0	17.5	4	10.0	81	18.6	28.6	0	M	55	130	2.0	400	5.61	36.305	82.388
100		C	488	283	58%	LLxMG	Kerang Technical High School	12	10	2	4	2	4	0	18.0	9	15.0	74	14.1	29.1	0	M	60	130	0.0	260	5.54	35.205	82.287
158		C	462	268	58%	WB	Rutherglen High School	8	10	2	4	2	3	0	17.0	4	10.0	87	20.0	30.0	0	M	60	130	0.0	300	5.64	35.219	82.219
171		C	430	255	59%	BLxSS	St Mary of The Angels College	7	9	2	4	2	2	0	15.0	5	13.0	84	20.0	33.0	0	M	60	130	0.0	220	5.43	34.124	82.124
163		C	435	264	61%	BAxMG	Dr K Sieben	9	10	1C	5	2	4	0	19.0	9	15.0	66	11.3	26.3	0	M	60	120	1.0	340	5.51	36.786	82.076
129		C	440	255	58%	MG	Nagle College	12	10	3	2	2	3	0	15.0	9	15.0	69	13.8	28.8	0	M	60	140	3.0	540	5.62	38.114	81.917
106		C	445	268	60%	LLxLL	H Krutch	8	10	1C	5	1	2.5	0	17.5	4	10.0	83	20.0	30.0	0	M	60	130	0.0	250	5.56	34.414	81.914
227		C	432	244	56%	SS	Yanco Agricultural High School	9	10	2	4	1	3	0	17.0	7	15.0	63	11.4	26.4	0	M	55	100	1.0	360	5.67	37.952	81.366
76		C	528	298	56%	RA	Goulbourn Valley Grammar	10	10	2	4	1	3.5	0	17.5	11	13.0	74	12.7	25.7	0	M	65	100	1.0	360	5.59	38.143	81.362

28 BEEF CARCASE RESULTS

Class: 3 - C - Heavy Domestic - Weight 240.1 - 300 Kg (continued)

Body	Tag ID	Market	Live Weight	HSCW	Dress	Breed Type	Exhibitor Details	P8 Fat (mm) / 10	MC 1a-7 / 5	FC Value	DIST / 5	Penalty	Total / 20	RFT (mm) / 15	EMA sq / 20	Total / 35	TBC	Sex	Hump	OSS	AUS MB	MSA MB	pH	Total / 45	Grand				
71		C	470	250	53%	HH	Glenormiston - South West TAFE	14	8	1C	5	2	4	0	17.0	12	11.0	73	16.5	27.5	0	M	55	100	0.0	200	5.56	36.686	81.203
118		C	479	297	62%	LL	Longerenong College	5	7	1C	5	2	2.5	0	14.5	4	10.0	104	20.0	30.0	0	M	60	100	0.0	230	5.46	36.576	81.076
174		C	508	269	53%	AA	St Pauls College	10	10	3	2	2	3	0	15.0	9	15.0	70	13.1	28.1	0	M	45	110	2.0	420	5.67	37.976	81.072
46		C	467	256	55%	RAxHH	Finley High School	10	10	1C	5	1	4	0	19.0	7	15.0	67	12.6	27.6	0	M	40	100	0.0	220	5.49	34.452	81.035
127		C	512	285	56%	HH	Nagle College	10	10	2	4	2	3	0	17.0	9	15.0	71	12.2	27.2	0	M	60	120	1.0	310	5.61	36.638	80.844
162		C	467	271	58%	BAxMG	Dr K Sieben	10	10	2	4	2	3.5	0	17.5	11	13.0	70	12.9	25.9	0	M	60	110	1.0	350	5.47	37.424	80.837
166		C	446	247	55%	SI	St Mary of The Angels College	9	10	1C	5	1	2.5	0	17.5	5	13.0	71	15.7	28.7	0	M	60	130	0.0	220	5.50	34.129	80.289
226		C	436	253	58%	LL	Yanco Agricultural High School	9	10	1C	5	1	2.5	0	17.5	6	15.0	68	13.4	28.4	0	M	60	130	0.0	230	5.57	34.143	80.063
91		C	462	265	57%	AA	Gundagai High School	16	4	1C	5	2	3.5	0	12.5	12	11.0	79	18.5	29.5	0	M	50	110	1.0	360	5.42	37.438	79.482
108		C	544	300	55%	RA	Longerenong College	15	6	1C	5	0	4	0	15.0	10	15.0	70	10.3	25.3	0	M	60	100	2.0	400	5.65	39.186	79.463
218		C	476	260	55%	SS	Yanco Agricultural High School	15	6	2	4	2	3	0	13.0	10	15.0	69	13.3	28.3	0	M	65	110	2.0	420	5.41	38.110	79.458
130		C	485	264	54%	HH	Nagle College	14	8	3	2	2	4	0	14.0	10	15.0	73	15.2	30.2	0	M	55	130	0.0	260	5.67	35.148	79.393
65		C	487	254	52%	SixAA	Glenburn Station	10	10	2	4	2	2.5	0	16.5	3	7.0	80	20.0	27.0	0	F	45	140	1.0	370	5.57	35.690	79.190
181		C	484	262	54%	MG	Sutherland & Sutherland	10	10	3	2	3	4	0	16.0	6	15.0	69	13.2	28.2	0	M	60	160	2.0	410	5.57	34.967	79.133
14		C	451	277	61%	LL	Billabong High School	8	10	2	4	1	2.5	0	16.5	3	7.0	80	18.0	25.0	0	M	60	100	1.0	340	5.56	37.381	78.899
159		C	494	279	56%	CCxWB	Rutherglen High School	5	7	3	2	1	3	0	12.0	6	15.0	75	15.0	30.0	0	M	60	110	1.0	330	5.66	36.829	78.840
215		C	536	292	54%	SS	Yanco Agricultural High School	12	10	1C	5	1	3.5	0	18.5	9	15.0	66	8.7	23.7	0	M	60	130	1.0	350	5.59	36.510	78.754
228		C	536	296	55%	SS	Yanco Agricultural High School	13	10	3	2	0	3	0	15.0	9	15.0	71	11.2	26.2	0	M	60	110	2.0	400	5.67	37.471	78.677
75		C	484	268	55%	SD	Glenormiston - South West TAFE	15	6	1C	5	2	3	0	14.0	4	10.0	86	20.0	30.0	0	M	55	110	0.0	200	5.54	34.433	78.433
204		C	432	245	57%	MG	Wattlewood & H C Glover & Son	15	6	3	2	0	4	0	12.0	9	15.0	67	13.6	28.6	0	M	65	130	2.0	410	5.59	37.286	77.868
42		C	552	293	53%	PH	Finley High School	7	9	1C	5	1	3.5	0	17.5	4	10.0	76	14.3	24.3	0	M	70	150	2.0	440	5.60	35.900	77.704
229		C	516	273	53%	SS	Yanco Agricultural High School	15	6	2	4	1	3	0	13.0	9	15.0	72	13.9	28.9	0	M	50	140	1.0	360	5.66	35.819	77.681
145		C	456	258	57%	MG	Onward Murray Greys	9	10	3	2	2	2.5	0	14.5	5	13.0	68	13.0	26.0	0	M	65	110	1.0	320	5.63	36.776	77.242

BEEF CARCASE RESULTS 29

Class: 3 - C - Heavy Domestic - Weight 240.1 - 300 Kg (continued)

Body	Tag ID	Market	Live Weight	HSCW	Dress	Breed Type	Exhibitor Details	P8 Fat (mm) / 10	MC 1a-7 / 5	FC Value / 5	DIST / 5	Penalty	Total / 20	RFT (mm) / 15	EMA sq / 20	Total / 35	TBC	Sex	Hump	OSS	AUS MB	MSA MB	pH	Total / 45	Grand				
128		C	449	252	56%	HH	Nagle College	10	10	2	4	2	3	0	17.0	5	13.0	61	9.6	22.6	0	M	60	100	0.0	240	5.59	36.686	76.242
22		C	461	250	54%	MG	Mr & Mrs I & A Burnside	6	8	2	4	1	3	0	15.0	7	15.0	59	8.6	23.6	0	M	55	100	1.0	300	5.55	37.605	76.212
57		C	463	247	53%	AAxMG	Geelong Grammar School Timbertop	10	10	1C	5	2	3	0	18.0	5	13.0	59	8.9	21.9	0	M	55	120	1.0	320	5.53	36.195	76.076
157		C	477	269	56%	WB	Rutherglen High School	6	8	2	4	2	2.5	0	14.5	3	7.0	78	17.6	24.6	0	M	60	110	1.0	320	5.57	36.671	75.787
184		C	448	259	58%	SD	Team H/C & L Daley	9	10	3	2	6	2.5	0	14.5	4	10.0	71	14.6	24.6	0	M	60	130	1.0	360	5.66	35.810	74.879
47		C	450	246	55%	AA	Finley High School	12	10	3	2	1	3	0	15.0	11	13.0	59	9.0	22.0	0	M	55	100	0.0	270	5.66	37.562	74.533
43		C	466	265	57%	HH	Finley High School	8	10	3	2	1	3.5	0	15.5	3	7.0	79	18.5	25.5	0	M	65	130	0.0	240	5.55	33.157	74.201
156		C	433	257	59%	WB	Rutherglen High School	4	5	2	4	1	2.5	0	11.5	4	10.0	75	17.0	27.0	0	M	70	120	0.0	240	5.57	34.171	72.683
193		C	514	300	58%	AA	The Hamilton & Alexandra College	18	0	3	2	2	4	0	6.0	12	11.0	82	17.1	28.1	0	M	65	130	3.0	510	5.57	38.610	72.667
72		C	542	285	53%	RP	Glenormiston - South West TAFE	14	8	2	4	3	3	0	15.0	6	15.0	60	6.0	21.0	0	M	55	130	2.0	390	5.59	36.671	72.662
78		C	520	300	58%	MG	C & J Grant	19	0	2	4	3	3	0	7.0	10	15.0	71	10.8	25.8	0	M	65	140	2.0	460	5.58	37.367	70.209
188		C	528	285	54%	AAxHH	Team H / R & C Nuttall / J & S Nuttall	24	0	2	4	1	4	0	8.0	10	15.0	71	12.2	27.2	0	M	75	170	1.0	350	5.50	34.743	69.949
217		C	504	279	55%	SS	Yanco Agricultural High School	20	0	1C	5	0	4	0	9.0	16	3.0	70	12.2	15.2	0	M	60	120	2.0	400	5.58	37.467	61.653
41		C	495	300	61%	LL	Finley High School	10	10	4	1	2	2.5	0	13.5	5	13.0	105	20.0	33.0	0	M	60	110	1.0	340	5.92	0.000	46.500
220		C	443	273	62%	LL	Yanco Agricultural High School	10	10	6	0	2	2.5	0	12.5	6	15.0	75	15.6	30.6	0	M	65	110	0.0	180	6.17	0.000	43.057
89		C	430	248	58%	AA	Gundagai High School	13	10	4	1	1	2.5	0	13.5	10	15.0	67	13.3	28.3	0	M	55	130	3.0	500	5.74	0.000	41.810
190		C	471	290	62%	LL	Team H / Rigdale & Parkdale Willows	6	8	4	1	2	2.5	0	11.5	4	10.0	102	20.0	30.0	0	M	65	150	0.0	300	6.09	0.000	41.500
79		C	448	253	56%	MG	C & J Grant	9	10	4	1	2	4	0	15.0	9	15.0	61	9.5	24.5	0	M	55	110	1.0	350	5.84	0.000	39.465
152		C	408	247	61%	LL	Rural Industry Skill Training	5	7	1C	5	1	1.5	0	13.5	2	4.0	107	20.0	24.0	0	M	55	100	0.0	180	5.55	0.000	37.500

Disclaimer Legend

Should an operator of the ABCAS competition model utilise the "spare" market category, and compile score results that differ to the default options, MSA will not assume responsibility for complaints relating to competition results.

*Market Specifications

P8 Fat - P8 Fat (mm)
MC - Meat Colour (1a - 7)
FC - Fat Colour (0 - 8)
DIST - Fat Distribution (1 - 5)

** Saleable Meat Yield

RFT - Rib Fat (mm)
EMA - Eye Muscle Area (sq cm)

*** MSA - Eating Quality MSA Specification

TBC - Tropical Breed Content (%)
Sex - Male or Female (M/F)
Hump - Hump Height (mm)
OSS - Ossification (100 - 590)
AUSMB - AusMeat Marbling (0 - 9)
MSAMB - MSA Marbling (100 - 1100)
pH - Meat pH

To receive eating quality points, carcasses must meet minimum MSA specifications.
Reasons carcasses receive no points:

1. Rib Fat less than 3mm
2. Fat Distribution inadequate
3. pH above 5.7
4. Meat Colour of 1a or greater than 3

30 BEEF CARCASE RESULTS

ROYAL MELBOURNE SHOW CARCASE COMPETITION 2012

Competition Date: 24/09/2012

Quarterming Site: 10-11 Rib

Class: 4 - D - Export - Weight 300.1 - 430 Kg

Body	Tag ID	Market	Live Weight	HSCW	Dress	Breed	Exhibitor Details	P8 Fat (mm) / 10	MC 1a-7 / 5	FC Value / 5	DIST / 5	Penalty	Total / 20	RFT (mm) / 15	EMA sq / 20	Total / 35	TBC	Sex	Hump	OSS	AUS MB	MSA MB	pH	Total / 45	Grand				
114		D	552	310	56%	RAxHH	Longerenong College	12	10	1C	5	1	3	0	18.0	9	15.0	90	20.0	35.0	0	M	60	110	1.0	370	5.59	37.433	90.433
48		D	574	324	56%	SI	Finley High School	13	10	2	4	0	3.5	0	17.5	9	15.0	95	20.0	35.0	0	M	70	130	1.0	360	5.54	36.695	89.195
98		D	540	319	59%	LL	Kerang Technical High School	10	8	1B	5	1	3	0	16.0	8	15.0	102	20.0	35.0	0	M	65	120	2.0	460	5.50	38.152	89.152
21		D	706	406	58%	SIxSI	Black Caviar Steer Syndicate	18	8	2	4	3	3.5	0	15.5	9	15.0	105	20.0	35.0	0	M	60	140	2.0	430	5.63	37.324	87.824
94		D	592	359	61%	LL	Kerang Technical High School	10	8	2	4	2	4	0	16.0	10	15.0	101	20.0	35.0	0	M	65	130	1.0	340	5.60	36.638	87.638
203		D	540	341	63%	MG	Wallawong Murray Greys / Toqueeza	10	8	1C	5	1	3	0	16.0	8	15.0	102	20.0	35.0	0	M	70	130	1.0	330	5.56	36.200	87.200
97		D	532	325	61%	LL	Kerang Technical High School	14	10	2	4	0	2.5	0	16.5	7	13.0	93	20.0	33.0	0	M	60	130	2.0	440	5.64	37.367	86.867
16		D	508	312	61%	LLxAA	Billabong High School	10	8	1C	5	0	2.5	0	15.5	7	13.0	101	20.0	33.0	0	M	75	110	2.0	420	5.58	37.476	85.976
202		D	514	327	64%	MG	Wallawong Murray Greys	15	10	1C	5	3	3	0	18.0	8	15.0	101	20.0	35.0	0	F	65	150	0.0	190	5.55	32.586	85.586
99		D	572	347	61%	LL	Kerang Technical High School	10	8	1B	5	0	3	0	16.0	7	13.0	110	20.0	33.0	0	M	65	130	1.0	320	5.53	36.048	85.048
70		D	596	330	55%	AA	Glenormiston - South West TAFE	15	10	2	4	3	4	0	18.0	10	15.0	80	13.2	28.2	0	M	70	130	3.0	570	5.61	38.590	84.790
165		D	580	355	61%	LLxLL	St Mary of The Angels College	9	7	1C	5	2	2.5	0	14.5	7	13.0	102	20.0	33.0	0	M	70	120	1.0	300	5.54	36.571	84.071
20		D	546	313	57%	AAxSI	Billabong High School	11	9	1C	5	1	4	0	18.0	11	15.0	77	13.1	28.1	0	M	60	130	2.0	410	5.53	37.376	83.427
121		D	510	307	60%	LLXRA	Longerenong College	14	10	1C	5	2	3.5	0	18.5	10	15.0	74	11.9	26.9	0	M	65	120	1.0	370	5.58	37.371	82.772
223		D	540	308	57%	MGxAA	Yanco Agricultural High School	19	6	1C	5	1	3.5	0	14.5	7	13.0	84	17.5	30.5	0	M	55	120	2.0	410	5.54	37.429	82.389
144		D	588	369	63%	LL	J O'Brien	10	8	3	2	2	4	0	14.0	8	15.0	96	18.7	33.7	0	M	80	150	0.0	270	5.55	34.467	82.161
180		D	594	328	55%	AA	Miss L Stewart	14	10	2	4	1	3	0	17.0	7	13.0	80	13.4	26.4	0	M	60	120	4.0	630	5.60	38.667	82.048
139		D	592	355	60%	CCxAA	Northern Melb Institute of TAFE	13	10	2	4	2	4	0	18.0	9	15.0	81	11.5	26.5	0	M	60	140	2.0	440	5.59	37.329	81.821
82		D	568	317	56%	MG	Grant High School	13	10	2	4	2	4	0	18.0	10	15.0	72	9.9	24.9	0	M	60	130	3.0	550	5.59	38.595	81.457
1		D	626	353	56%	CCXRA	Ashwood Park Charolais	17	10	2	4	1	3.5	0	17.5	12	15.0	78	10.0	25.0	0	M	60	120	3.0	590	5.51	38.957	81.436
80		D	564	341	60%	MG	C & J Grant	15	10	2	4	2	4	0	18.0	13	15.0	79	11.6	26.6	0	M	75	140	2.0	400	5.56	36.771	81.406

Class: 4 - D - Export - Weight 300.1 - 430 Kg (continued)

BEEF CARCASE RESULTS 31

Body	Tag ID	Market	Live Weight	HSCW	Dress	Breed Type	Exhibitor Details	P8 Fat (mm) / 10	MC 1a-7 / 5	FC Value	DIST / 5	Penalty	Total / 20	RFT (mm) / 15	EMA sq / 20	Total / 35	TBC	Sex	Hump	OSS	AUS MB	MSA MB	pH	Total / 45	Grand				
178		D	602	326	54%	AA	Miss L Stewart	15	10	2	4	1	3.5	0	17.5	6	11.0	82	14.7	25.7	0	M	65	140	3.0	550	5.48	38.133	81.327
107		D	512	309	60%	LL	Mrs E Lissenden	10	8	1C	5	2	2.5	0	15.5	6	11.0	84	17.4	28.4	0	M	65	100	1.0	300	5.58	37.362	81.231
125		D	580	335	58%	AA	Mortlake P.12 College	19	6	1B	5	2	3	0	14.0	5	9.0	92	19.5	28.5	0	M	50	120	3.0	540	5.57	38.590	81.116
64		D	550	315	57%	AA	Glenburn Station	19	6	1B	5	0	3.5	0	14.5	11	15.0	77	12.9	27.9	0	M	65	140	3.0	510	5.54	38.186	80.554
39		D	680	392	58%	SS	Finley High School	19	6	2	4	0	3	0	13.0	10	15.0	91	13.8	28.8	0	M	65	120	3.0	520	5.48	38.733	80.512
141		D	618	364	59%	CCxAA	Northern Melb Institute of TAFE	18	8	1C	5	2	3.5	0	16.5	14	13.0	84	12.4	25.4	0	M	65	130	3.0	500	5.65	38.619	80.488
113		D	638	353	55%	SS	Longerenong College	14	10	2	4	2	3.5	0	17.5	10	15.0	77	9.4	24.4	0	M	65	140	3.0	520	5.66	38.176	80.090
111		D	672	411	61%	CC	Longerenong College	10	8	1C	5	2	2.5	0	15.5	4	6.0	108	20.0	26.0	0	M	70	120	3.0	500	5.60	38.219	79.719
88		D	598	339	57%	AA	Glenburn Station	20	4	2	4	1	4	0	12.0	13	15.0	84	14.6	29.6	0	M	60	140	2.0	430	5.53	37.367	79.008
197		D	548	313	57%	CCxSS	Urrbrae Agricultural High School	21	2	2	4	2	3	0	9.0	13	15.0	85	17.6	32.6	0	M	65	130	2.0	400	5.58	37.362	78.932
179		D	622	330	53%	AA	Miss L Stewart	18	10	1B	5	0	3	0	18.0	6	11.0	77	11.5	22.5	0	M	60	130	3.0	570	5.50	38.248	78.753
115		D	732	426	58%	CCxAA	Longerenong College	16	10	1B	5	1	3	0	18.0	14	13.0	88	9.0	22.0	0	M	75	140	3.0	550	5.57	38.638	78.631
216		D	608	373	61%	LL	Yanco Agricultural High School	9	7	3	2	1	2.5	0	11.5	5	9.0	105	20.0	29.0	0	M	75	110	2.0	430	5.60	37.719	78.219
116		D	596	346	58%	LLxRA	Longerenong College	19	6	1C	5	1	3	0	14.0	11	15.0	80	11.7	26.7	0	M	70	120	2.0	390	5.48	37.438	78.184
92		D	706	414	59%	AA	Gundagai High School	22	0	2	4	3	4	0	8.0	16	9.0	109	20.0	29.0	0	M	70	150	4.0	600	5.60	38.510	75.510
87		D	556	338	61%	LL	B & S Griffiths	8	5	1C	5	1	2.5	0	12.5	4	6.0	104	20.0	26.0	0	M	65	130	1.0	300	5.61	35.267	73.767
112		D	574	338	59%	CCxBA	Longerenong College	8	5	1C	5	1	2.5	0	12.5	4	6.0	100	20.0	26.0	0	M	75	130	1.0	300	5.59	35.252	73.752
142		D	608	351	58%	CCxAA	Northern Melb Institute of TAFE	20	4	2	4	2	3.5	0	11.5	17	7.0	88	15.8	22.8	0	M	75	120	3.0	550	5.54	39.367	73.678
96		D	516	319	62%	LL	Kerang Technical High School	6	1	1C	5	2	2.5	0	8.5	5	9.0	99	20.0	29.0	0	M	70	120	1.0	310	5.54	36.148	73.648
110		D	580	318	55%	MG	Longerenong College	9	7	2	4	1	3.5	0	14.5	7	13.0	71	9.2	22.2	0	M	65	150	2.0	400	5.58	36.124	72.830
61		D	552	333	60%	LLxLL	B & A Gill	5	0	1C	5	1	2.5	0	7.5	5	9.0	111	20.0	29.0	0	M	65	120	0.0	200	5.56	34.162	70.662
143		D	712	415	58%	CCxAA	Northern Melb Institute of TAFE	20	4	1C	5	2	2.5	0	11.5	19	3.0	98	15.6	18.6	0	M	60	130	2.0	440	5.54	38.124	68.267
136		D	718	402	56%	CCxAA	Northern Melb Institute of TAFE	20	4	1C	5	1	3.5	0	12.5	17	7.0	86	10.0	17.0	0	M	70	140	3.0	530	5.54	38.657	68.202

32 BEEF CARCASE RESULTS

Class: 4 - D - Export - Weight 300.1 - 430 Kg (continued)

Body	Tag ID	Market	Live Weight	HSCW	Dress	Breed Type	Exhibitor Details	P8 Fat (mm) / 10	MC 1a-7 / 5	FC Value	DIST / 5	Penalty	Total / 20	RFT (mm) / 15	EMA sq / 20	Total / 35	TBC	Sex	Hump	OSS	AUS MB	MSA MB	pH	Total / 45	Grand				
138		D	698	399	57%	AA	Northern Melb Institute of TAFE	20	4	2	4	1	3.5	0	11.5	14	13.0	73	3.0	16.0	0	M	70	130	3.0	580	5.57	38.705	66.177
66		D	622	355	57%	AA	Glenburn Station	20	4	18	5	2	4	0	13.0	16	9.0	67	3.6	12.6	0	M	55	140	5.0	770	5.59	38.605	64.187
81		D	558	324	58%	MG	C & J Grant	13	10	4	1	4	3.5	0	14.5	9	15.0	78	12.6	27.6	0	M	60	170	2.0	460	5.75	0.000	42.115
126		D	536	315	59%	SI	G C & V J Muller	10	8	2	4	4	3	0	15.0	4	6.0	79	14.0	20.0	0	M	65	140	2.0	410	6.10	0.000	34.999

Disclaimer Legend

Should an operator of the ABCAS competition model utilise the "spare" market category, and compile score results that differ to the default options, MSA will not assume responsibility for complaints relating to competition results.

*Market Specifications

P8 Fat - P8 Fat (mm)
 MC - Meat Colour (1a - 7)
 FC - Fat Colour (0 - 8)
 DIST - Fat Distribution (1 - 5)

** Saleable Meat Yield

RFT - Rib Fat (mm)
 EMA - Eye Muscle Area (sq cm)

*** MSA - Eating Quality MSA Specification

TBC - Tropical Breed Content (%)
 Sex - Male or Female (M/F)
 Hump - Hump Height (mm)
 OSS - Ossification (100 - 590)
 AUSMB - AusMeat Marbling (0 - 9)
 MSAMB - MSA Marbling (100 - 1100)
 pH - Meat pH

To receive eating quality points, carcasses must meet minimum MSA specifications.
 Reasons carcasses receive no points:

1. Rib Fat less than 3mm
2. Fat Distribution inadequate
3. pH above 5.7
4. Meat Colour of 1a or greater than 3

The Royal Agricultural
Society of Victoria



RASV

**ROYAL
MELBOURNE
SHOW**

Melbourne Showgrounds
Epsom Road
Ascot Vale VIC 3032

Telephone +61 3 9281 7444
Facsimile +61 3 9281 7592
Email info@rasv.com.au

www.rasv.com.au

www.royalshow.com.au

The Royal Agricultural Society of Victoria Limited
ABN 66 006 728 785 ACN 006 728 785

