

ROYAL
MELBOURNE
DAIRY SHOW

1999 Catalogue of Results



EXCELLENCE IN AGRICULTURE

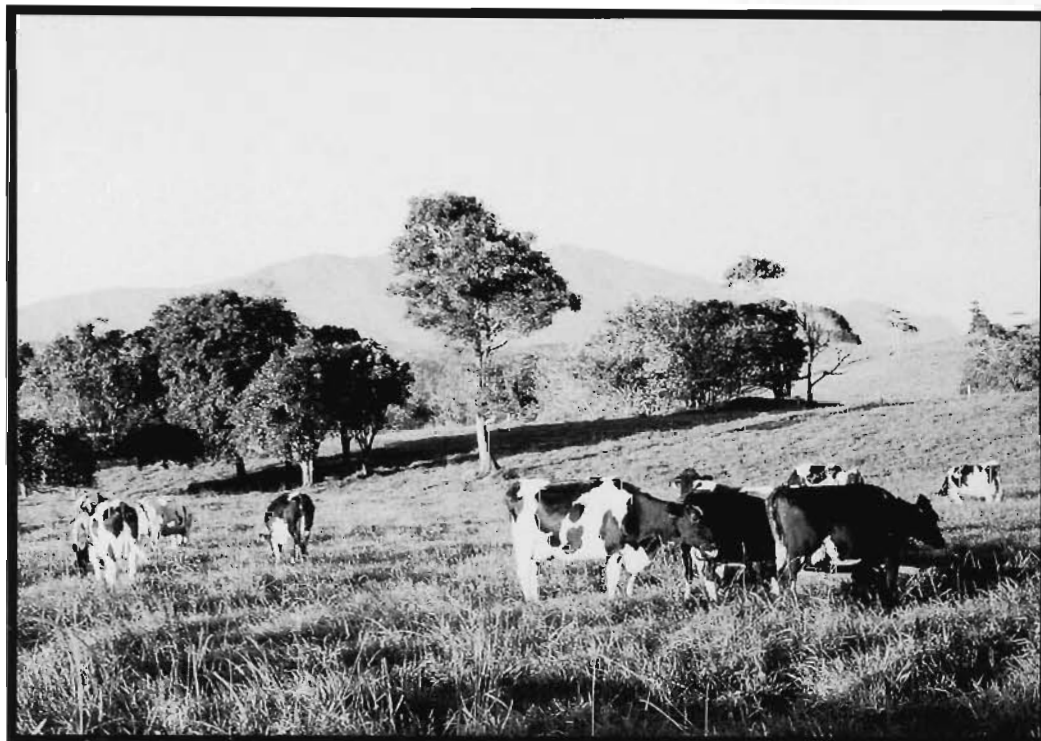


AUSTRALIAN DAIRY CORPORATION



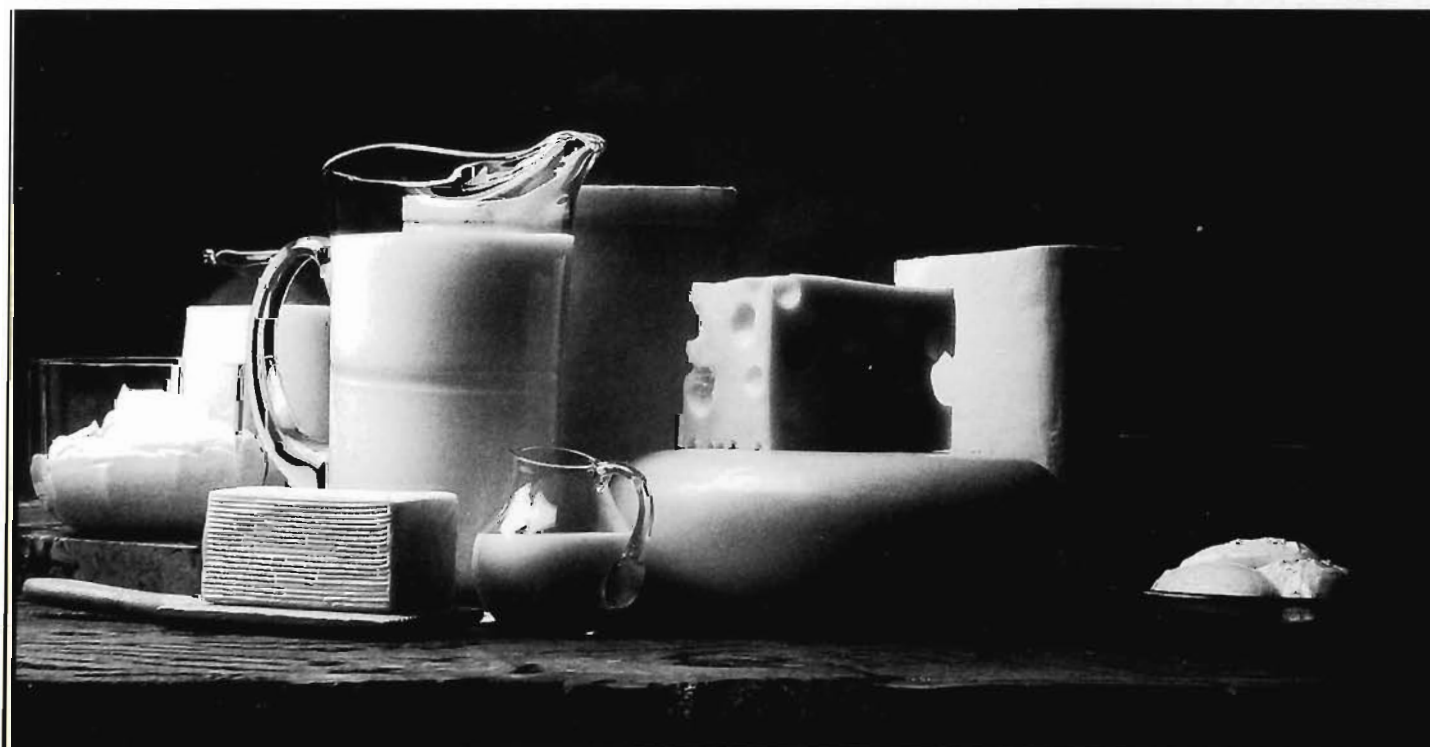
AUSTRALIAN DAIRY CORPORATION

Delivering Service and Support to Australia's Dairy Industry



**The Australian Dairy Corporation is proud to be the major sponsor of
the Royal Melbourne Dairy Show.**

**We would like to congratulate all exhibitors for another outstanding year and for their contribution
to a world-class industry producing world-class products.**



**More information from the Australian Dairy Corporation and on Australian dairy products
is available at:**

www.dairycorp.com.au

CONTENTS

THE ROYAL MELBOURNE DIARY SHOW – 1999

Office Bearers

JUDGING

1999 Judging Panel

Scoring Criteria

RESULTS

Trophy Awards

Butter Section

Dried Milk Products

Chocolate Section

Cheese Section

Yoghurt Section

Cream Section

Dairy Desserts

Philadelphia Cheesecake Challenge Section

Flavoured Milk Section

Ice Cream Section

Innovation Award & Packaging Award

Non Bovine Section

EXHIBITORS

Index to Exhibitors

The Royal Agricultural Society of Victoria Limited

ACN 006 728 785

Royal Melbourne Showgrounds, Ascot Vale, Victoria 3032 Australia
Tel: (03) 9281 7444 Fax: (03) 9376 2973 (email:rasv@melbourne.net)

LIST OF OFFICE BEARERS, 1999 - 2000

(as at 20.7.99)

PATRON-IN-CHIEF

His Excellency, The Honorable Sir William Deane, AC, KBE
Governor-General of the Commonwealth of Australia

PATRON

His Excellency, The Honorable Sir James Gobbo, AC
Governor of Victoria

BOARD OF DIRECTORS

(CH) J. H. Seymour	C.R. Lyons
I.I. Bucknall	R.G.A Clarke
J.M. Burston	B. E. Laws
C.J. Fox	G.J. Sheppard

PRESIDENT

J. H. Seymour

COUNCIL

	Mrs J. Allen		K. Jordan
(T)	The Hon. Tom Austin	(LC)	C.R. Kelly
(LC)	R.T. Balderstone, CMG, MC	(LC)	J.W. Kelly
	J. Balfour Brown		N.E. King
	D.G. Beard	(LC)	R.B. Langdon
	W.R.R. Beggs, AM		L.R. Latta
	R.S. Bell		B.E. Laws
(LC)	A.C. Bott		Mrs E.R. Lithgow
(LC)	J.K. Buchanan, AM	(VP)	C.R. Lyons
	I.I. Bucknall		M.T. Marriott
(LC)	J.M. Burston		P. McMahon
(LC)	R.M. Butler		The Hon. Pat McNamara, MLA
(LC)	Sir Rupert Clarke, Bart, MBE	(LC)	J.K. Morton, AM
	R.G.A. Clarke	(LC)	C.O. Moore
	B.M. Crotty		F.J. Neilson
(LC)	W.D. Crowley, QPM		G.J. Phillips
(LC)	E. Drinkwater		J.W. Rae, OAM
	N.A. Edwards, APM		B.W.A. Redpath
	Professor L. Falvey	(LC)	J.S.A. Robb
	K.A. Finnin		P.J.B. Ronald
(VP)	C.J. Fox		I.McC. Rough
(LC)	C.B. Gardiner		A.F. Rowden
(TLC)	J.M. Gardiner		A.J. Russell
(LC)	R.B. Gerrand		J.H. Seymour
(LC)	A. Gibson		S.R. Shelmerdine
(LC)	W. McL. Greaves		G.J. Sheppard
	R.F. Haselgrove		G.B. Starritt
(LC)	J.G.W. Head, OAM	(TLC)	G.R. Starritt, AM, OBE
	W.H. Hill		I.McK. Starritt
(LC)	G. Howell	(LC)	F.R.I. Stephens
		(LC)	K.W. Urquhart
		(LC)	R.G. Walker, OAM
			J.C. Watson
		(LC)	The Hon. Vernon Wilcox, CBE, QC
		(TLC)	G.P.H. Wilson, CMG

LEGEND: (T) denotes Trustee
(VP) denotes Vice-President
(LC) denotes Life Councillor
(CH) denotes Chairman of Board

CHIEF EXECUTIVE

Peter Payne FCA

COMPANY SECRETARY

Adnan Mansour BBus, FCPA, FCIS, FAI

JUDGES

CHAIRMAN

D Wilkins

JUDGES – Butter, Milk, Cheese

U. Berger	L Lane
K Caferella	A Oesch
R Doherty	R Prince
G Fly	L Sharp
R Freeman	N Willman
J Irwin	S McKay

D Brown

JUDGES – Chocolate

A Debono E Haun B Meuller

JUDGES – Ice Cream

G Baker S Cutri A Smyth

JUDGES – Packaging

J Irwin K Caferella

JUDGES – Cheesecake

K Caferella L Brushfield

STEWARDS

D Day C Day

SCORING CRITERIA

PHILIDAPHIA CHEESECAKE CHALLENGE

Criteria

Flavour & Aroma	45pts
Body & Texture	35pts
Presentation	20pts

Awards

Gold	94-100pts
Silver	92-93.5pts

NON BOVINE CHEESE

Criteria

Flavour & Aroma	50pts
Texture	30pts
Condition, Colour, Finish	20pts

Awards

Gold	94-100pts
Silver	92-93.5pts

NON BOVINE YOGURT

Criteria

Flavour & Aroma	50pts
Body & Texture	30pts
Colour, Condition	20pts

Awards

Gold	94-100pts
Silver	92-93.5pts

FLAVOURED MILK

Criteria

Flavour & Aroma	50pts
Body & Texture	30pts
Colour, Condition	20pts

Awards

Gold	97-100pts
Silver	95-96.5pts

ICE CREAM

Criteria

Appearance	15pts
Body & Texture	30pts
Flavour	50pts
Melting Defects	5pts

Awards

Gold	98-100pts
Silver	96-97.5pts

PACKAGING

Criteria

Aesthetics	45pts
Utility	35pts
Product Information	20pts

Awards

Gold	90-100pts
Silver	80-89.5pts

CHEESE

Criteria

Flavour & Aroma	50pts
Body & Texture	30pts
Condition, Colour, Finish	20pts

Awards

Gold	94-100pts
Silver	92-93.5pts

YOGHURT

Criteria

Flavour & Aroma	50pts
Texture	30pts
Condition	20pts

Awards

Gold	94-100pts
Silver	92-93.5pts

CREAM

Criteria

Flavour & Aroma	50pts
Body & Texture	30pts
Colour, Condition	20pts

Awards

Gold	94-100pts
Silver	92-93.5pts

DAIRY DESSERTS

Criteria

Flavour & Aroma	50pts
Body & Texture	30pts
Colour, Condition	20pts

BUTTER

Criteria

Flavour & Aroma	50pts
Texture, including Body, Grain & Moisture	30pts
Condition, including Colour, Salting, Packing	20pts

Awards

Gold	94-100pts
Silver	93-93.5pts

DRIED MILK PRODUCTS

Criteria

Flavour & Aroma	50pts
Solubility	20pts
Scorched Particles & Extraneous Matter	20pts
Appearance	10pts

Awards

Gold	97-100pts
Silver	95-96.5pts

CHOCOLATE

Criteria – Milk, White & Dark Chocolate

Flavour & Aroma	50pts
Smoothness & Texture	30pts
Colour & Condition	20pts

Criteria – Other Classes

Flavour & Aromoa	40pts
Texture	30pts
Colour & Condition	15pts
Presentation	15pts

Awards

Gold	90-100pts
Silver	80-89.5pts

PACKAGING

Criteria	
Appearance	45pts
Usability	30pts
Product information	25pts
Awards	
Gold	90-100pts
Silver	80-89.5pts

Criteria	
Flavour & Aroma	50pts
Body & Texture	30pts
Colour, Condition, Finish	20pts
Awards	
Gold	94-100pts
Silver	82-93.5pts
Criteria	
Flavour & Aroma	40pts
Texture	30pts
Condition	30pts
Awards	
Gold	94-100pts
Silver	83-93.5pts
Criteria	
Flavour & Aroma	30pts
Body & Texture	30pts
Colour, Condition	30pts
Awards	
Gold	94-100pts
Silver	82-93.5pts
Criteria	
Flavour & Aroma	30pts
Body & Texture	30pts
Colour, Condition	30pts
Awards	
Gold	94-100pts
Silver	82-93.5pts
Criteria	
Flavour & Aroma	30pts
Body & Texture	30pts
Colour, Condition	30pts
Awards	
Gold	94-100pts
Silver	83-93.5pts
Criteria	
Flavour & Aroma	30pts
Texture, including Body	30pts
Gain & Moisture	30pts
Condition, including	30pts
Colour, Salting, Packaging	30pts
Awards	
Gold	94-100pts
Silver	83-93.5pts
Criteria	
Flavour & Aroma	30pts
Solubility	30pts
Sensory Attributes &	30pts
Extrinsic Matter	30pts
Appearance	30pts
Awards	
Gold	97-100pts
Silver	92-96.5pts

1999

**ROYAL
MELBOURNE
DAIRY SHOW**

RESULTS

TROPHIES

SUPREME CHEESE AWARD

PRESENTED BY: *Gilbert Chandler College*
AWARDED TO: UNITED MILK – TASMANIA
MILD CHEDDAR

CHAMPION CHEDDAR

PRESENTED BY: *The Australian Dairy Corporation*
AWARDED TO: UNITED MILK TASMANIA
MILD CHEDDAR

MOST SUCCESSFUL EXHIBITOR CHEESE

PRESENTED BY: *Victorian Agricultural Societies Association*
AWARDED TO: UNITED MILK TASMANIA

CHAMPION BUTTER FOR EXPORT

AWARDED TO: BONLAC FOOD – COBDEN

CHAMPION FRESH BUTTER

AWARDED TO: BONLAC FOODS LIMITED

CHAMPION DRIED MILK PRODUCT

AWARDED TO: BONLAC FOODS – COBDEN

CHAMPION CHOCOLATE

PRESENTED BY: *Leader Newspaper*
AWARDED TO: BENEDICTS (ASSORTED)

CHAMPION HARD VARIETIES

PRESENTED BY: *Cryovac*
AWARDED TO: NATIONAL FOODS – ROMANO

CHAMPION - STRETCHED VARIETIES

PRESENTED BY: *Cryovac*
AWARDED TO: BONLAC FOODS LTD – COROROOKE
PERFECT MOZZARELLA LOAF

CHAMPION PRIZE – EYE

AWARDED TO: LACTOS TASMANIA – EUROPEAN STYLE
GOUDA

CHAMPION PRIZE – WHITE MOUND/BLUE

PRESENTED BY: *Cryovac*
AWARDED TO: KING ISLAND DAIRIES P/L – BASS STRAIGHT BLUE

CHAMPION PRIZE – FRESH UNRIPENED/FRUIT/SAVOURY

PRESENTED BY: *Tweed Valley Fruit Processors Pty Ltd*
AWARDED TO: LACTOS TASMANIA CAMEMBERT WITH PEPPERCORNS

CHAMPION PRIZE – OTHER VARIETIES

AWARDED TO: TIMBOON FARMHOUSE CHEESE – TILSIT

CHAMPION PRIZE – DIP

PRESENTED BY: *Chris's Greek Dips*
AWARDED TO: BLACK SWAN – TROUT

CHAMPION PRIZE – FARMHOUSE CHEESES

AWARDED TO: TIMBOON FARMHOUSE CHEESES – TILSIT

CHAMPION PRIZE - YOGHURT

AWARDED TO: PAULS LTD – STRAWBERRY

CHAMPION PRIZE – CREAM

AWARDED TO: NATIONAL FOODS NORTH ROCKS – THICKENED CREAM

CHAMPION PRIZE – DAIRY DESSERTS

PRESENTED BY: *Tweed Valley Fruit Processors Pty Ltd*
AWARDED TO: EXQUISINE PTY LTD – STRAWBERRY MOUSSE

CHAMPION PRIZE – MILK

PRESENTED BY: *Dragoco Australia Pty Ltd*
AWARDED TO: DAIRY FARMERS – CLARENCE GARDENS EGG NOG

CHAMPION PRIZE – ICE CREAM

PRESENTED BY: *Quest International*
AWARDED TO: RICKETTS POINT FINE FOODS PTY LTD – LIME DELICIOUS

CHAMPION PRIZE – PREMIUM ICE CREAM

PRESENTED BY: *Germantown*
AWARDED TO: RICKETTS POINT FINE FOODS PTY LTD
ELDEFLOWER

CHAMPION PRIZE – PACKAGING

AWARDED TO: BONLAC FOODS – BODELLA TASTY

CHAMPION PRIZE – CHEESECAKE – COMMERCIAL SECTION

PRESENTED BY: *Kraft Foods Limited*
AWARDED TO: CHEESECAKE HEAVEN

CHAMPION PRIZE – CHEESECAKE – NON COMMERCIAL SECTION

PRESENTED BY: *Kraft Foods Limited*
AWARDED TO: MR LUKE WATSON – LEMON CHEESECAKE

CHAMPION PRIZE - NON BOVINE

AWARDED TO: TASMANIAN CHEESE – GOAT FRESH

CHAMPION PRIZE PATE – RETAIL STYLE

AWARDED TO: JEAN PIERRE GOURMET PTY LTD
CRACKED PEPPER

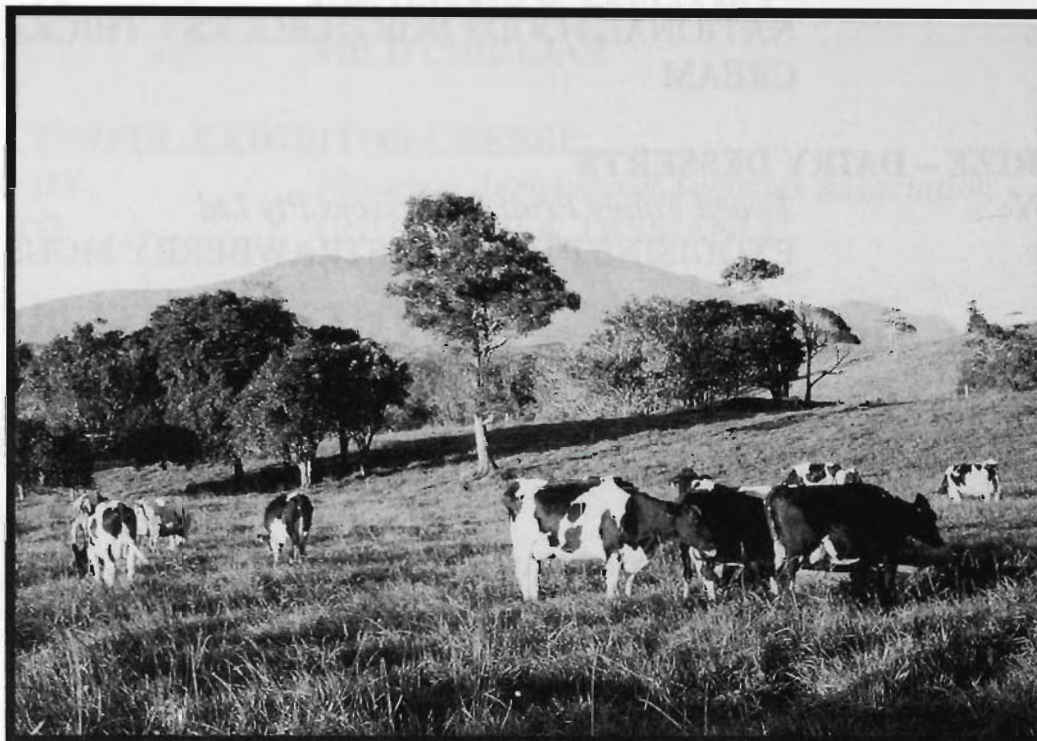
CHAMPION PRIZE MEAT TERRINE

AWARDED TO: EXQUISINE – CHICKEN PRUNE & APRICOT TERRINE



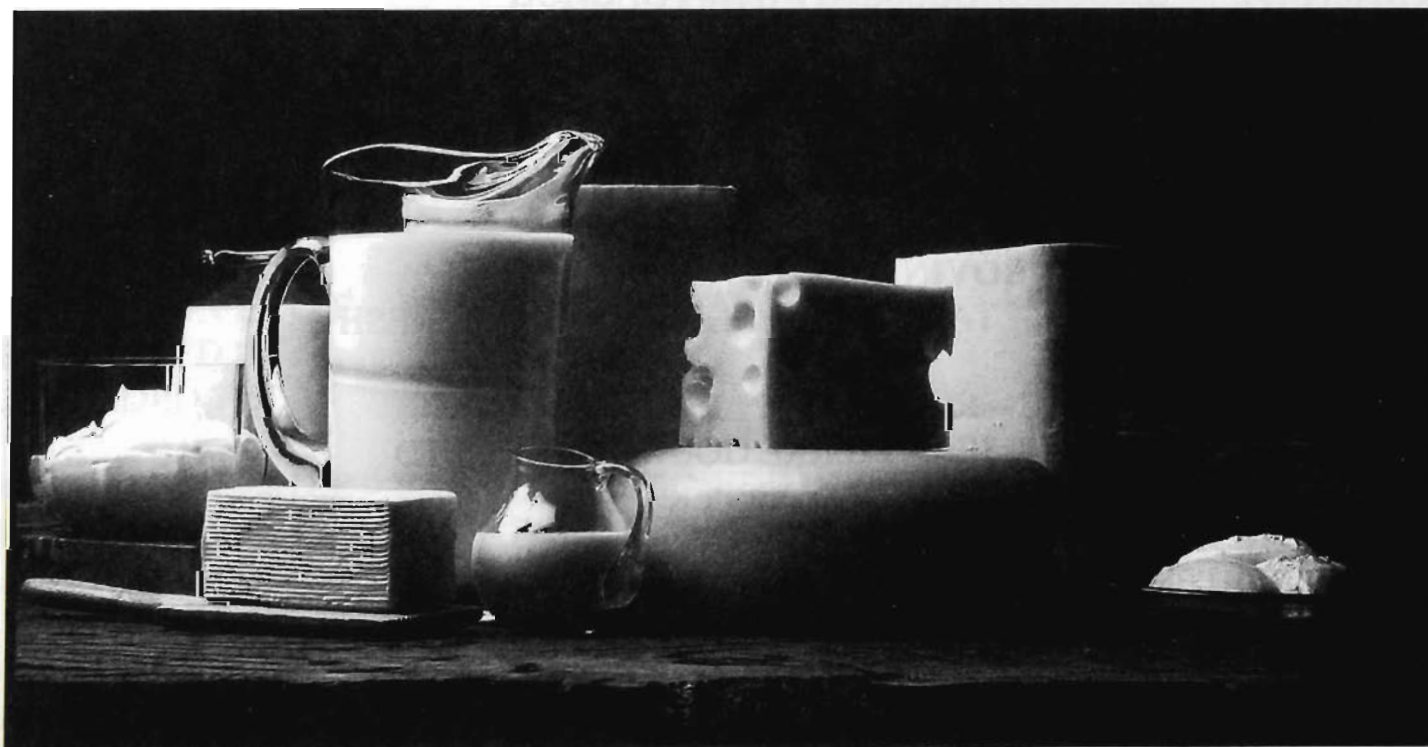
AUSTRALIAN DAIRY CORPORATION

Delivering Service and Support to Australia's Dairy Industry



**The Australian Dairy Corporation is proud to be the major sponsor of
the Royal Melbourne Dairy Show.**

**We would like to congratulate all exhibitors for another outstanding year and for their contribution
to a world-class industry producing world-class products.**



**More information from the Australian Dairy Corporation and on Australian dairy products
is available at:**

www.dairycorp.com.au

Class 101 BOX OF BUTTER Salted, suitable for export and packed in standard export box.

48	PAULS LIMITED (CURTIS FARM)		
411	BONLAC FOODS - COBDEN	93.5	Silver
486	BONLAC FOODS LIMITED	93	Silver
635	DAIRY FARMERS - GLOUCESTER		

Class 102 BOX OF BUTTER Unsalted, suitable for export and packed in standard export box.

79	PAULS LIMITED (CURTIS FARM)		
385	BONLAC FOODS - COBDEN	94	Gold
487	BONLAC FOODS LIMITED	93	Silver
629	DAIRY FARMERS - BOOVAL		
634	DAIRY FARMERS - GLOUCESTER		

Class 103 BOX OF BUTTER. Four weeks stored.

56	PAULS LIMITED (CURTIS FARM)		
----	-----------------------------	--	--

Class 104 BOX OF BUTTER. Two weeks stored.

58	PAULS LIMITED (CURTIS FARM)	Disqualified	
----	-----------------------------	--------------	--

Class 105 BOX OF PRINT BUTTER. Reduced Salt type not less than 15kg to box.

485	BONLAC FOODS LIMITED	Not Received	
501	BEGA CO-OPERATIVE SOCIETY	Disqualified	

Class 106 BOX OF PRINT BUTTER. (Parchment wrapped) not less than 15kg to box.

384	BONLAC FOODS - COBDEN	93.5	Silver
484	BONLAC FOODS LIMITED	93.5	Silver
633	DAIRY FARMERS - GLOUCESTER	93	Silver

Class 107 BOX OF PRINT BUTTER. (Foil wrapped), not less than 15kg to box.

483	BONLAC FOODS LIMITED	94.5	Gold
-----	----------------------	------	------

Class 108 BOX OF PRINT BUTTER. Lactic (cultured), unsalted or lightly salted.

482	BONLAC FOODS LIMITED	93.5	Silver
-----	----------------------	------	--------

Class 109 BUTTER BLENDED. Retail pack dairy blend.

383	BONLAC FOODS - COBDEN (WESTERN STAR SPREADABLE)	94	Gold
512	BEGA CO-OPERATIVE SOCIETY		

Class 110 FULL CREAM MILK, SPRAY DRIED.

435	BONLAC FOODS LTD - DANDENONG (BONLAC FCP INSTANT)	Not Received	
478	BONLAC FOODS - COBDEN	96.5	Silver
632	DAIRY FARMERS - GLOUCESTER	96	Silver

Class 111 SKIM MILK, SPRAY DRIED.

8	NORCO CO-OPERATIVE LTD	95	Silver
489	BONLAC FOODS - COBDEN		
598	DAIRY FARMERS - HEXHAM		
631	DAIRY FARMERS - GLOUCESTER	95.5	Silver

Class 112 BUTTERMILK, SPRAY DRIED.

500	BONLAC FOODS - COBDEN		
630	DAIRY FARMERS - GLOUCESTER	96	Silver

Class 113 INSTANT SKIM MILK POWDER. Consumer pack.

408	BONLAC FOODS LTD - DANDENONG (DIPLOMA SKIM MILK POWDER)	95.5	Silver
-----	---------------------------------------------------------	------	--------

Class 114 INSTANT FULL CREAM POWDER. Consumer pack.

445	BONLAC FOODS LTD - DANDENONG (DIPLOMA FULL CREAM MILK POWDER)		
96		Silver	

Class 115 MILK CHOCOLATE. In unbranded moulded blocks.

297	PINK LADY CHOCOLATES	90	Gold
532	HERITAGE FINE CHOCOLATES	84	Silver
712	HAIGHS MANUFACTURING PTY LTD	81	Silver
713	HAIGHS MANUFACTURING PTY LTD	87	Silver
714	HAIGHS MANUFACTURING PTY LTD		

Class 116 WHITE CHOCOLATE. In unbranded moulded blocks.

161	PINK LADY CHOCOLATES	87	Silver
531	HERITAGE FINE CHOCOLATES	87	Silver

Class 117 DARK CHOCOLATE. In unbranded moulded blocks.

24	PINK LADY CHOCOLATES	90	Gold
530	HERITAGE FINE CHOCOLATES	86	Silver
710	HAIGHS MANUFACTURING PTY LTD	83	Silver
711	HAIGHS MANUFACTURING PTY LTD	86	Silver

Class 118 CHOCOLATE COATED BARS.

49	PINK LADY CHOCOLATES (CARAMEL FUDGE)	84	Silver
50	PINK LADY CHOCOLATES (DESSERT NUTTY HONEY NOUGAT)	80	Silver
51	PINK LADY CHOCOLATES (DESSERT ALMOND NOUGAT)		
52	PINK LADY CHOCOLATES (DESSERT CHERRIE & ALMOND NOUGAT)	90	Gold
206	PINK LADY CHOCOLATES (MARZIPAN BAR)	92	Gold
472	HERITAGE FINE CHOCOLATES (MILK CHOCOLATE MOUNTAIN BAR - HONEYCOMB & HAZELNUTS)	90	Gold
681	HAIGHS MANUFACTURING PTY LTD (PEPPERMINT TRUFFLE)	90	Gold
708	HAIGHS MANUFACTURING PTY LTD (NOUGAT)	84	Silver
709	HAIGHS MANUFACTURING PTY LTD (CAPPUCCINO)	93	Gold

Class 119 BOXED CHOCOLATES. Assortments.

65	PINK LADY CHOCOLATES (ASSORTED TRUFFLES FOR CONNOISSEURS)	88	Silver
66	PINK LADY CHOCOLATES (HAND MADE CREAM TRUFFLES)	94	Gold
194	WILD ABOUT YOU BUSH FOODS (ASSORTED)	95	Gold
224	WILD ABOUT YOU BUSH FOODS (PILLOW PACK)	95	Gold
225	WILD ABOUT YOU BUSH FOODS (SQUARE PACK)	95	Gold
465	BENEDICTS (ASSORTED)	96	Gold
467	JOHN WALKER CHOCOLATIER	Not Received	
471	HERITAGE FINE CHOCOLATES (IMPRESSIONS CHOCOLATE ASSORTMENT)	88	Silver
513	ADORA HANDMAKE CHOCOLATES	89	Silver
528	HERITAGE FINE CHOCOLATES (PREMIUM CHOCOLATE FRUIT CREAMS)	Not Received	
529	HERITAGE FINE CHOCOLATES (LUXURY CHOCOLATE ASSORTMENT)	93	Gold
654	HAIGHS MANUFACTURING PTY LTD (CONNOISSEURS SELECTION)	93	Gold
655	HAIGHS MANUFACTURING PTY LTD (FRUIT & NUT ASSORTMENT)	94	Gold
656	HAIGHS MANUFACTURING PTY LTD (MILK & DARK ASSORTMENT)	89	Silver
657	HAIGHS MANUFACTURING PTY LTD (ASSORTED TRUFFLES)	95	Gold
658	HAIGHS MANUFACTURING PTY LTD (ASSORTED CREAMS)	93	Gold
684	HAIGHS MANUFACTURING PTY LTD (NUT ASSORTMENT)	93.5	Gold
718	HAIGHS MANUFACTURING PTY LTD (IMAGES OF AUSTRALIA (SYDNEY))	89	Silver

Class 120 CHOCOLATE PANNED GOODS, (including panned assortments).

60	PINK LADY CHOCOLATES (FRUIT AND NUT MIX)	92	Gold
61	PINK LADY CHOCOLATES (MILK SCORCHED PEANUTS)	91.5	Gold
62	PINK LADY CHOCOLATES (MIXED COFFEE BEANS)	92	Gold
63	PINK LADY CHOCOLATES (DARK SCORCHED ALMONDS)	91.5	Gold
64	PINK LADY CHOCOLATES (MILK SCORCHED ALMONDS)	91.5	Gold
497	JOHN WALKER CHOCOLATIER (CANDIED HAZELNUTS & CANDIED PEANUTS)	Not Received	
498	JOHN WALKER CHOCOLATIER (COFFEE BEANS)	Not Received	
651	HAIGHS MANUFACTURING PTY LTD (CHOCOLATE HAZELNUTS IN CHEST BOX)	94	Gold
652	HAIGHS MANUFACTURING PTY LTD (CARAMEL CHOCS IN GIFT TIN)	88	Silver
653	HAIGHS MANUFACTURING PTY LTD (MILK SCORCHED ALMONDS)	89.5	Silver

Class 121 CHOCOLATE COATED GINGER.

46	PINK LADY CHOCOLATES (DARK GINGER)	87.5	Silver
59	PINK LADY CHOCOLATES (MILK GINGER)	87.5	Silver
496	JOHN WALKER CHOCOLATIER (DOUBLE DIPPED MILK & DARK GINGER)	Not Received	
650	HAIGHS MANUFACTURING PTY LTD (DARK GINGER IN WHITE CARTON)	90	Gold

Class 122 BOXED CHOCOLATES. Single Variety (including "dinner mints").

54	PINK LADY CHOCOLATES (WHITE CHOCOLATE BUTTERMINT)	93.5	Gold
55	PINK LADY CHOCOLATES (CHRISTMAS PUDDING TRUFFLES)	90	Gold
57	PINK LADY CHOCOLATES (PEPPERMINT CREAM CAMEO)	89	Silver
68	PINK LADY CHOCOLATES (IRISH CREAM TRUFFLES)	95	Gold
219	WILD ABOUT YOU BUSH FOODS (LEMON MYRTLE)	95	Gold
220	WILD ABOUT YOU BUSH FOODS (WILD LIME TRUFFLE)	95	Gold
221	WILD ABOUT YOU BUSH FOODS (ILLAWARRA PLUM)	95	Gold
222	WILD ABOUT YOU BUSH FOODS (QUANDONG TRUFFLE)	95	Gold
223	WILD ABOUT YOU BUSH FOODS (WATTLESEED TRUFFLE)	95	Gold
374	BENEDICTS (CHOC PLUM PUDDING TRUFFLE)	95.5	Gold
494	JOHN WALKER CHOCOLATIER	Not Received	

2 DAIRY PRODUCE

495	JOHN WALKER CHOCOLATIER	Not Received
526	HERITAGE FINE CHOCOLATES (CHOCOLATE PASSIONFRUIT CREAMS)	89 Silver
527	HERITAGE FINE CHOCOLATES (AUTUMN LEAVES - PRALINES)	95 Gold
541	ADORA HANDMAKE CHOCOLATES (VANILLA PYRAMID)	80.5 Silver
542	ADORA HANDMAKE CHOCOLATES (ORANGE CHAMPAGNE)	80 Silver
545	ADORA HANDMAKE CHOCOLATES (LIME)	
638	HAIGHS MANUFACTURING PTY LTD (MILK CHOCOLATE FROGS)	88 Silver

Class 123 CHOCOLATE MACADAMIAS.

110	PATONS MACADAMIA PLANTATIONS P/L (ASSORTED)	88 Silver
111	PATONS MACADAMIA PLANTATIONS P/L (KOALAS)	90 Gold
112	PATONS MACADAMIA PLANTATIONS P/L (BEFORE & AFTERS)	89 Silver
135	PATONS MACADAMIA PLANTATIONS P/L (CONCERTO TRUFFLES)	87 Silver
138	PATONS MACADAMIA PLANTATIONS P/L (CHOCOLATE)	89 Silver
172	PATONS MACADAMIA PLANTATIONS P/L (ROYALS TOFFEE & CHOCOLATE)	92.5 Gold
218	WILD ABOUT YOU BUSH FOODS (CHOCOLATE MACADAMIA)	88 Silver
469	HERITAGE FINE CHOCOLATES (CHOCOLATE MACADAMIA LOG)	89 Silver
544	ADORA HANDMAKE CHOCOLATES (MACADAMIA)	89 Silver
648	HAIGHS MANUFACTURING PTY LTD (CHOCOLATE MACADAMIAS)	92 Gold
659	HAIGHS MANUFACTURING PTY LTD (MACADAMIA IMAGINE)	92 Gold

Class 124 HOLLOW MOULDED. Novelties.

53	PINK LADY CHOCOLATES (FOILED BILBY)	83 Silver
205	WILD ABOUT YOU BUSH FOODS (WIIUH GRUBS)	92 Gold
216	WILD ABOUT YOU BUSH FOODS (DARK PLATYPUS)	91 Gold
227	WILD ABOUT YOU BUSH FOODS (MILK PLAYTPUS)	Not Received
470	HERITAGE FINE CHOCOLATES (CHOCOLATE GIANT BRIGHT EYES RABBIT)	Not Received
473	HERITAGE FINE CHOCOLATES (MILK CHOCOLATE BELGIAN EGG)	89 Silver
474	HERITAGE FINE CHOCOLATES (CHOCOLATE HONEY BEAR)	94 Gold
475	HERITAGE FINE CHOCOLATES (MILK CHOCOLATE HAPPY RABBIT)	75
476	HERITAGE FINE CHOCOLATES (CUDDLY BUNNY)	92 Gold
491	JOHN WALKER CHOCOLATIER	Not Received
492	JOHN WALKER CHOCOLATIER	Not Received
493	JOHN WALKER CHOCOLATIER (HOLLOW MOULDED)	Not Received
499	HERITAGE FINE CHOCOLATES (WHITE CHOCOLATE DOG)	92 Gold
502	HERITAGE FINE CHOCOLATES (CLARENCE THE DUCK - MILK & WHITE CHOCOLATE)	92 Gold
536	HERITAGE FINE CHOCOLATES (CLARENCE THE DUCK - WHITE & ORANGE CHOCOLATE)	92 Gold
543	ADORA HANDMAKE CHOCOLATES (MILK ROASTER)	78
645	HAIGHS MANUFACTURING PTY LTD (MILK CHOCOLATE CHRISTMAS BELL)	93 Gold
646	HAIGHS MANUFACTURING PTY LTD (MILK CHOCOLATE FISH)	90 Gold

Class 125 CHEDDAR CHEESE. Mild.

7	NORCO CO-OPERATIVE LTD	
17	NATIONAL FOODS (FARMERS UNION)	93 Silver
164	WARRNAMBOOL MILL PRODUCTS PTY LTD	Not Received
326	UNITED MILK TASMANIA	95 Gold
449	BONLAC FOODS - STANHOPE	92 Silver
481	BONLAC FOODS LIMITED (BODALLA)	92 Silver
515	BEGA CO-OPERATIVE SOCIETY (BEGA MILD)	
549	CLARLES STURT UNIVERSITY CHEESE FACTORY	
585	ELGAAR FARM (MILD)	Disqualified
603	DAIRY FARMERS - JERVOIS (DAIRY VALE)	92 Silver

Class 126 CHEDDAR CHEESE. Semi Matured.

16	NATIONAL FOODS (FARMERS UNION)	
325	UNITED MILK TASMANIA	92.5 Silver
448	BONLAC FOODS - STANHOPE	
480	BONLAC FOODS LIMITED (BODALLA)	
586	ELGAAR FARM (TASTY)	Disqualified
614	DAIRY FARMERS - JERVOIS (DAIRY VALE)	

Class 127 CHEDDAR CHEESE. Matured.

6	NORCO CO-OPERATIVE LTD	
15	NATIONAL FOODS (FARMERS UNION)	
163	WARRNAMBOOL MILL PRODUCTS PTY LTD	Not Received
324	UNITED MILK TASMANIA	93 Silver
447	BONLAC FOODS - STANHOPE	
479	BONLAC FOODS LIMITED (BODALLA)	
601	DAIRY FARMERS - JERVOIS	
735	MAFFRA FARM HOUSE CHEESES	

Class 128 CHEDDAR CHEESE. Vintage.

14	NATIONAL FOODS (FARMERS UNION)	92 Silver
162	WARRNAMBOOL MILL PRODUCTS PTY LTD	93.5 Silver
273	KING ISLAND DAIRIES PTY LTD (SURPRISE BAY CHEDDAR)	
323	UNITED MILK TASMANIA	92 Silver
446	BONLAC FOODS - STANHOPE	
514	BEGA CO-OPERATIVE SOCIETY (BEGA STRONG & BITEY)	
587	ELGAAR FARM	Disqualified
600	DAIRY FARMERS - JERVOIS (DAIRY VALE)	

Class 129 CHEDDAR CHEESE. Reduced, Low Fat or Low Salt.

5	NORCO CO-OPERATIVE LTD	93 Silver
13	NATIONAL FOODS (FARMERS UNION)	92 Silver
322	UNITED MILK TASMANIA	Not Received
599	DAIRY FARMERS - JERVOIS (DAIRY VALE)	

Class 130 CHEDDAR CHEESE. Processed.

433	BONLAC FOODS (BEGA SUPER SLICE)	92.5 Silver
444	BONLAC FOODS (BEGA SO LIGHT)	93 Silver
455	BONLAC FOODS (BEGA SUPER SLIM)	92 Silver
570	CONNOISSEUR FOODS PTY LTD (NATURAL SMOKED PROCESSED CHEESE)	93 Silver

Class 135 STRETCHED CURD. Includes Mozzarella, Provolone, Provolette, Scarmorze, Haloumy, Bocconcini.

73	PANTALICA CHEESE (CHERRY BOCCINCINI)	93 Silver
126	DAIRY FARMERS - TOOWOOMBA (CABOOLTURE MOZZARELLA)	92.5 Silver
195	FRESH CHEESE CO (AUST) PTY LTD (MAMMA LUCIA - CACIOCAVALLO)	
196	FRESH CHEESE CO (AUST) PTY LTD (MAMMA LUCIA - HALLOUMI)	
197	FRESH CHEESE CO (AUST) PTY LTD (MAMMA LUCIA - BOCCONCINI)	92.5 Silver
198	FRESH CHEESE CO (AUST) PTY LTD (MAMMA LUCIA - CAPRICCIOSA MOZZARELLA)	92 Silver
451	BONLAC FOODS LTD - COROROOKE (PERFECT PEAR)	Disqualified
452	BONLAC FOODS LTD - COROROOKE (PERFECT MOZZARELLA LOAF)	94 Gold
644	FLORIDIA CHEESE (MOZZARELLA LOAF)	
697	LEMNOS CHEESE PTY LTD (HALLOUMI)	92 Silver

Class 136 EYE. Includes Edam, Gouda, Fontina, Swiss style, Samsoe.

127	DAIRY FARMERS - SIMPSON (MIL LEL SWISS)	Not Received
235	LACTOS TASMANIA (HEIDI GRUYERE WASH RIND SWISS)	92.5 Silver
236	LACTOS TASMANIA (EUROPEAN STYLE GOLDA)	93 Silver
237	LACTOS TASMANIA (ST CLAIRE EYE STYLE - SWEET NUTTY)	
736	MAFFRA FARM HOUSE CHEESES (STOCKMANS CHOICE CHESHIRE)	Disqualified

Class 137 WHITE MOULD, SURFACE RIPENED. Includes Brie, Camembert, Double Cream, Triple Cream.

229	KING ISLAND DAIRIES PTY LTD (KING ISLAND PHOQUES COVE 200GR CAMEMBERT 200G)	Not Received
233	LACTOS TASMANIA (HERITAGE CAMEMBERT)	93 Silver
234	LACTOS TASMANIA (DOMAINE WHITE DIAMOND TRADITIONAL BRIE)	93.5 Silver
259	KING ISLAND DAIRIES PTY LTD (KING ISLAND CAPE WICKAM BRI BRIE)	
260	KING ISLAND DAIRIES PTY LTD (KING ISLAND PHOQUES COVE CAMEMBERT)	
329	UNICORN CHEESE (UNICORN CAMEMBERT DOUBLE CREAM)	93 Silver
331	UNICORN CHEESE (UNICORN BRIE 2PPG DOUBLE CREAM BRIE)	93 Silver
361	TIMBOON FARMHOUSE CHEESE (TIMBOON BRIE)	92.5 Silver
362	TIMBOON FARMHOUSE CHEESE (TIMBOON CAMEMBERT)	92.5 Silver
363	UNICORN CHEESE (UNICORN BRIE)	
456	FONTI DIARY FOODS PTY LTD (MARGARET RIVER CHEESE CO CAMEMBERT)	93 Silver
468	FONTI DIARY FOODS PTY LTD (MARGARET RIVER CHEESE CO BRIE)	93 Silver
689	LACRUM CHEESE P/L (MELLA BRIE)	94 Gold
690	LACRUM CHEESE P/L (MELLA LIMEMBENT)	93 Silver
691	LACRUM CHEESE P/L (MELLA CAMEMBERT)	
698	MILAWA CHEESE CO PTY LTD (MILAWA CAMEMBERT COWS WHITE MOULD SURFACE RIPENED)	
723	JINDI CHEESE PTY LTD (WATTLE VALLEY CAMEMBERT)	
724	JINDI CHEESE PTY LTD (TRADITIONAL)	92.5 Silver
725	JINDI CHEESE PTY LTD (SUPREME)	93 Silver
726	JINDI CHEESE PTY LTD (CAMEMBERT)	92.5 Silver
727	JINDI CHEESE PTY LTD (BRIE)	

POSEIDON RESULTS

CLASS	EXHIBIT	EXHIBIT NO	AWARD
141	Fruit Flavoured		
	Tropical Fruit Slices	398	Silver
	Poppy Seed Fruit Slice	409	Silver
153	Dips		
	Spring Onion	365	Silver
	Skinny French Onion	368	Silver
	Skinny Salmon	369	Silver
	Skinny Sun Dried Tomato	370	Silver
	Skinny Tzatziki	371	Silver
	Skinny Avocado	372	Silver
	Skinny Herb & Garlic	373	Silver
	Trout	375	Gold
	Hommus & Three Peppers		
	Two up Black Swan Mediteranean	376	Silver
	Tzatziki	377	Silver
	Sun Dried Tomato	378	Silver
	Salmon	379	Gold
	Hot and Spicy	380	Gold
	French Onion	381	Gold
	Avocado	382	Silver
	Corn Relish	386	Silver
	Pesto Poseidon Mediteranean	399	Silver
	Hommus & Sun Dried Tomato		
Two up Poseidon Mediteranean	405	Silver	
Hommus Spinach Two Up Poseidon Mediteranean	406	Silver	

We apologise for this error in not including the results in the catalogue.

Class 138 BLUE CHEESE. Includes Blue Vein or any cheese containing Blue Mould.

103	DAIRY FARMERS - TOOWOOMBA (CABOOLTURE BLUE VEIN)	92.5	Silver
231	LACTOS TASMANIA (DOMAINE DEEP BLUE TRADITIONAL BLUE)	92.5	Silver
232	LACTOS TASMANIA (HERITAGE TRUE BLUE MILD BLUE)	93	Silver
255	KING ISLAND DAIRIES PTY LTD (KING ISLAND NETHERBY BLUE)	92.5	Silver
256	KING ISLAND DAIRIES PTY LTD (KING ISLAND LIGHTHOUSE BLUE BRIE)	93	Silver
257	KING ISLAND DAIRIES PTY LTD (KING ISLAND ROARING FORTIES BLUE)	93	Silver
258	KING ISLAND DAIRIES PTY LTD (KING ISLAND BASS STRAIGHT BLUE)	95	Gold
359	TIMBOON FARMHOUSE CHEESE (ST JOSEPH'S BLUE WASHED RIND BLUE)	93	Silver
360	TIMBOON FARMHOUSE CHEESE (TIMBOON ZOLA BLUE BRIE)	93	Silver
700	MILAWA CHEESE CO PTY LTD (MILAWA BLUE COWS BLUE VEIN)		

Class 139 HARD CHEESE. Includes Parmesan, Romano, Pecorino, Pepato, Rigatino.

1	NATIONAL FOODS (FARMERS UNION ROMANO)	93	Silver
11	NATIONAL FOODS (FARMERS UNION PEPATO)		
71	PANTALICA CHEESE (PEPATO)		
72	PANTALICA CHEESE (PECORINO)		
128	DAIRY FARMERS - SIMPSON (MIL LEL SUPERIOR PEPATO)		
129	DAIRY FARMERS - SIMPSON (MIL LEL SUPERIOR PECORINO)		
130	DAIRY FARMERS - SIMPSON (MIL LEL SUPERIOR ROMANO)		
131	DAIRY FARMERS - SIMPSON (MIL LEL SUPERIOR PARMESAN)		
183	FRESH CHEESE CO (AUST) PTY LTD (MAMMA LUCIA - PECORINO PECORINO)		
193	FRESH CHEESE CO (AUST) PTY LTD (MAMMA LUCIA - PEPATO PECORINO)		
441	BONLAC FOODS (PERFECT WAXED PARMESAN)		
442	BONLAC FOODS (PERFECT PARMESAN)		
642	FLORIDIA CHEESE (PECORINO PEPATO)	92	Silver
643	FLORIDIA CHEESE (PECORINO PLAIN)	92	Silver

Class 140 FRESH UNRIPENED. Includes Cottage, Cream Cheese, Neufchatel, Ricotta, Quark, Bakers, Mascarpone, Stracchino.

44	PANTALICA CHEESE (RILOTTA - BULK)		
81	PANTALICA CHEESE (FRESH PECORINO)	94	Gold
90	PAULS LIMITED (CREAMED COTTAGE CHEESE)	94	Gold
101	MUNDELLA FOODS PTY LTD		
116	DAIRY FARMERS - MALANDA (DAIRY FARMERS CREAM CHEESE)	Not Received	
190	FRESH CHEESE CO (AUST) PTY LTD (MAMMA LUCIA - STRACCHINO)		
191	FRESH CHEESE CO (AUST) PTY LTD (MAMMA LUCIA MASCARPONE)	93	Silver
204	FRESH CHEESE CO (AUST) PTY LTD (MAMMA LUCIA - REDUCED FAT RICOTTA)		
230	LACTOS TASMANIA (LACTOS PLAIN NEUFCHATEL)	93.5	Silver
305	REGAL CREAM PRODUCTS PTY LTD (BULLA LOW FAT COTTAGE CHEESE PLAIN)	92	Silver
351	RIVERINA CHEESE P/L (RICOTTA)	93.5	Silver
423	BURRA FOODS PTY LTD (LESNA BAKERS CHEESE)	92	Silver
424	BURRA FOODS PTY LTD (BLUE COW COTTAGE CHEESE)	92.5	Silver
450	BONLAC FOODS LTD - COROROOKE (PERFECT RICOTTA)		
579	CLARLES STURT UNIVERSITY CHEESE FACTORY (RICOTTA)	92	Silver
583	ELGAAR FARM (MASCARPONE)	92.5	Silver
584	ELGAAR FARM (QUARK)	92	Silver
596	DAIRY FARMERS - HEXHAM (NATURAL COTTAGE)	92	Silver
597	DAIRY FARMERS - HEXHAM (OAK CLASSIC CREAMED COTTAGE)		
639	FLORIDIA CHEESE (RICOTTA)	92	Silver
640	FLORIDIA CHEESE (PECORINO FRESH)	92	Silver

Class 141 FRUIT FLAVOURED.

238	LACTOS TASMANIA (TASMANIAN PLATTER - APRICOT, SULTANA & GINGER APRICOT SULTANA & GINGER NEUFCHATEL)	94	Gold
261	LACTOS TASMANIA (LACTOS STRAWBERRY NEUFCHATEL)	93	Silver
309	REGAL CREAM PRODUCTS PTY LTD (BULLA LOW FAT COTTAGE CHEESE WITH PINEAPPLE)		
434	BEGA CO-OPERATIVE SOCIETY (APRICOT & GINGER)	94	Gold
548	CLARLES STURT UNIVERSITY CHEESE FACTORY (BUSH TOMATO)	92.5	Silver

Class 142 SAVOURY FLAVOURED. (Vegetable, meat, other) (Cream Cheese or Neufchatel base).

240	LACTOS TASMANIA (TASSIE DEVILS - PASTRAMI & SMOKED CHEESE BITES PASTRAMI & SMOKED PROCESS)		
270	LACTOS TASMANIA (HERITAGE CEMEMBERT WITH SUNDRIED TOMATO)	93	Silver
271	LACTOS TASMANIA (HERITAGE CEMEMBERT WITH PEPPERCORNS)	94.5	Gold
272	LACTOS TASMANIA (TASSIE DEVILS - TOMATO & BLUE CHEESE BITES TOMATO & BLUE)	93.5	Silver
296	REGAL CREAM PRODUCTS PTY LTD (BULLA LOW FAT COTTAGE CHEESE LOW FAT COTTAGE CHEESE WITH GARDEN SALAD)	93.5	Silver
307	REGAL CREAM PRODUCTS PTY LTD (BULLA LOW FAT COTTAGE CHEESE LOW FAT COTTAGE CHEESE WITH ONION & CHIVES)		
318	REGAL CREAM PRODUCTS PTY LTD (BULLA LOW FAT COTTAGE CHEESE WITH GHERKIN)	92	Silver
358	TIMBOON FARMHOUSE CHEESE (HERBE TORTE CREAM CHEESE & HERBS)		

Class 143 OTHER than Cream Cheese or Neufchatel base.

154	MUNDELLA FOODS PTY LTD (MARINATED)	92.5	Silver
155	MUNDELLA FOODS PTY LTD (MIXED PEPPERCORNS)		
156	MUNDELLA FOODS PTY LTD (CAPSICUM & CHILLI)		
157	MUNDELLA FOODS PTY LTD (SUNDRIED TOMATOES & OLIVES)		
158	MUNDELLA FOODS PTY LTD (FINE HERBS & GARLIC)		
185	FRESH CHEESE CO (AUST) PTY LTD (MAMMA LUCIA STRAWBERRY FLAVOURED MASCARPONE)	92.5	Silver
186	FRESH CHEESE CO (AUST) PTY LTD (MAMMA LUCIA VANILLA FLAVOURED MASCARPONE)	92	Silver
187	FRESH CHEESE CO (AUST) PTY LTD (MAMMA LUCIA CHOCOLATE FLAVOURED MASCARPONE)	92.5	Silver
188	FRESH CHEESE CO (AUST) PTY LTD (MAMMA LUCIA TIRAMISU FLAVOURED MASCARPONE)	94	Gold
189	FRESH CHEESE CO (AUST) PTY LTD (MAMMA LUCIA - CHILLI PECORINO)	93	Silver
268	LACTOS TASMANIA (LACTOS CHOCOLATE NEUFCHATEL)		
269	LACTOS TASMANIA (TASSIE DEVILS - GUACOMOLE & SALMON CHEESE BITES)	92	Silver
357	TIMBOON FARMHOUSE CHEESE (GOURMET FETA IN OIL & HERBS)	92.5	Silver
516	BEGA CO-OPERATIVE SOCIETY (RYEFIELD WITH CUMIN SEED)	93	Silver
517	BEGA CO-OPERATIVE SOCIETY (SMOKED CHEDDAR)		
521	BEGA CO-OPERATIVE SOCIETY (PEPPER RYEFIELD)	92.5	Silver
522	BEGA CO-OPERATIVE SOCIETY (CHILLI RYEFIELD)		
523	ASHGROVE FARM CHEESE (BUSH PEPPER)	Not Received	
581	CLARLES STURT UNIVERSITY CHEESE FACTORY (FARMHOUSE CHEESE WITH NATIVE MINT)	93	Silver
641	FLORIDIA CHEESE (PECORINO CHILLI)	92	Silver
676	DENISE'S KING ISLAND MILK SUPPLY (MARINATED FETTA)	94	Gold

Class 144 CLUB CHEESES.

265	LACTOS TASMANIA (MERSEY VALLEY WITH PEPPERCORNS)		
266	LACTOS TASMANIA (MERSEY VALLEY WITH MEDITERANEAN STYLE TOMATO CLUB)		
267	LACTOS TASMANIA (MERSEY VALLEY VINTAGE CLUB)		
518	BEGA CO-OPERATIVE SOCIETY (FRENCH ONION)		
519	BEGA CO-OPERATIVE SOCIETY (GARLIC & CHIVE)		
524	ABC CHEESE FACTORY PTY LTD (TILBA CLUB CHEESE CAPSICUM & CHILLI)	92.5	Silver
533	ABC CHEESE FACTORY PTY LTD (TILBA CLUB CHEESE)		
535	ABC CHEESE FACTORY PTY LTD (TILBA CLUB CHEESE SMOKED)	93	Silver
537	ABC CHEESE FACTORY PTY LTD (TILBA CLUB CHEESE GOLD)		
538	ABC CHEESE FACTORY PTY LTD (TILBA CLUB CHEESE TRILOGY)		
539	ABC CHEESE FACTORY PTY LTD (TILBA CLUB CHEESE SUNDRIED TOMATO)		
540	ABC CHEESE FACTORY PTY LTD (TILBA CLUB CHEESE VINTAGE)	92	Silver
546	ABC CHEESE FACTORY PTY LTD (TILBA CLUB CHEESE PEPPERCORN)	92	Silver

Class 145 FETA.

10	MUNDELLA FOODS PTY LTD (MEDITERRANEAN)	93	Silver
70	MUNDELLA FOODS PTY LTD (EUROPEAN)	93.5	Silver
184	FRESH CHEESE CO (AUST) PTY LTD (MAMMA LUCIA - FETTA)	92.5	Silver
364	RIVERINA CHEESE P/L	92	Silver
466	FONTI DIARY FOODS PTY LTD (MARGARET RIVER CHEESE CO)	92.5	Silver
628	DAIRY FARMERS - BOOVAL	93.5	Silver
696	LEMNOS CHEESE PTY LTD (AUSTRALIAN FETTA)	93	Silver

4 DAIRY PRODUCE

Class 146 SMEAR RIPENED OR WASHED RIND.

254	KING ISLAND DAIRIES PTY LTD (KING ISLAND STORMY)	92.5	Silver
264	LACTOS TASMANIA (DOMAINE RED SQUARE SMEAR RIPENED BRIE)	94	Gold
686	LACRUM CHEESE P/L (LADY MELLA)		
687	LACRUM CHEESE P/L (TASMANIAN CHALET ROMADUR)	93.5	Silver
688	LACRUM CHEESE P/L (TASMANIAN CHALET LIMBURGER)	93	Silver
699	MILAWA CHEESE CO PTY LTD (MILAWA GOLD COWS CHEESE - SMEAR RIPENED)	Not Received	
707	TOP PADDOCK CHEESES (RANCEBY SMEAR RIPENED)	92	Silver

Class 147 ANY OTHER CHEESE NOT ALREADY SPECIFIED. Includes

Havarti, Cotto, Steppen, Tilsit, Raclette.

114	DAIRY FARMERS - SIMPSON (MIL LEL HAVARTI)	Not Received	
251	LACTOS TASMANIA (CRAOLE VALLEY HAVARTI HAVARTI)	93	Silver
253	KING ISLAND DAIRIES PTY LTD (KING ISLAND STOKES POINT SMOKED CHEDDAR)	93.5	Silver
262	LACTOS TASMANIA (HEIDI RACLETTE)	92.5	Silver
352	UNICORN CHEESE (CLASSIC GOUDA WITH WHITE MOULD)	92	Silver
356	TIMBOON FARMHOUSE CHEESE (TIMBOON TILSIT TILSIT)	94.5	Gold
477	FONTI DIARY FOODS PTY LTD (MARGARET RIVER CHEESE CO BAKED RICOTTA)	93.5	Silver
509	ASHGROVE FARM CHEESE (DOUBLE GLOUCESTER)	Not Received	
510	ASHGROVE FARM CHEESE (RUBICON RED LEICESTER CHEESE)	Not Received	
520	BEGA CO-OPERATIVE SOCIETY (RYEFIELD)	93	Silver
582	ELGAAR FARM (MEADOW CHEESE)	Disqualified	

Class 150 PATE - Chicken liver food-service style.

679	EXQUISINE (BRANDY, PORT & SAGE PATE)	Not Received	
680	EXQUISINE (THAI LEMONGRASS PATE)	Not Received	

Class 151 PATE - chicken liver retail style.

721	JEAN-PIERRE GOURMET P/L (CRACKED PEPPER)	93	Silver
722	JEAN-PIERRE GOURMET P/L (TRADITIONAL)	92.5	Silver

Class 152 MEAT terrine, non seafood.

677	EXQUISINE (PORK & VEAL WITH FIG & CASHEWS)		
678	EXQUISINE (CHICKEN PRUNE & APRICOT TERRINE)		

Class 153 DIPS.

89	PAULS LIMITED (FRENCH ONION)	Not Received	
388	CHRIS' GREEK DIPS (LITE & FRESH SPRING ONION)	94	Gold
525	CHRIS' GREEK DIPS (LITE & FRESH TZALZIKI)	92.5	Silver
572	MUNDELLA FOODS PTY LTD (SUNDRIED TOMATO)	94	Gold
573	MUNDELLA FOODS PTY LTD (SMOKED SALMON)	93	Silver
574	MUNDELLA FOODS PTY LTD (FRENCH ONION)	93	Silver
575	MUNDELLA FOODS PTY LTD (CHEESE & CHIVES)	94	Gold
576	MUNDELLA FOODS PTY LTD (AVOCADO)	92	Silver
660	CHRIS' GREEK DIPS (TRADITIONAL AVOCADO)	92.5	Silver
661	CHRIS' GREEK DIPS (LITE & FRESH ROCKET & CHIVES)	93	Silver
662	CHRIS' GREEK DIPS (LITE & FRESH TUNA & CHIVES)	Not Received	
663	CHRIS' GREEK DIPS (LITE & FRESH SEMI DRIED TOMATO)	92	Silver
664	CHRIS' GREEK DIPS (LITE & FRESH FRENCH ONION)	92	Silver
665	CHRIS' GREEK DIPS (TRADITIONAL FRENCH ONION)	92	Silver
666	CHRIS' GREEK DIPS (TRADITIONAL SEMI DRIED TOMATO)	93	Silver
667	CHRIS' GREEK DIPS (TRADITIONAL SPINACH)	91	
668	CHRIS' GREEK DIPS (TRADITIONAL OLIVE)	93	Silver
669	CHRIS' GREEK DIPS (TRADITIONAL SPICY CAPSICUM)	92	Silver
671	CHRIS' GREEK DIPS (TRADITIONAL SALMON)	94	Gold
673	CHRIS' GREEK DIPS (TRADITIONAL TZALZIKI)	94	Gold
682	CHRIS' GREEK DIPS (TRADITIONAL SPRING ONION)	92	Silver

Class 155 NATURAL YOGHURT (set).

88	PAULS LIMITED	92.5	Silver
410	BURRA FOODS PTY LTD (HAKEA)	93.5	Silver
464	FONTI DIARY FOODS PTY LTD (MARGARET RIVER CHEESE CO GREEK NATURAL)		
505	AMARINA AUSTRALIA PTY LTD		
569	ELGAAR FARM		
571	MUNDELLA FOODS PTY LTD (PREMIUM BLEND)	92.5	Silver
683	LEMNOS CHEESE PTY LTD	92	Silver

Class 156 NATURAL SKIM MILK OR REDUCED FAT YOGHURT.

87	PAULS LIMITED	92	Silver
203	TAMAR VALLEY DAIRY (NATURAL LITE YOGHURT)	92.5	Silver
214	WESTHAVEN DAIRY		
421	BURRA FOODS PTY LTD (GIPPSLAND)		
462	FONTI DIARY FOODS PTY LTD (MARGARET RIVER CHEESE CO 99.7% FAT FREE NATURAL)	92.5	Silver
463	FONTI DIARY FOODS PTY LTD (MARGARET RIVER CHEESE CO REDUCED FAT NATURAL)	92.5	Silver
508	AMARINA AUSTRALIA PTY LTD		
556	MUNDELLA FOODS PTY LTD		
567	DAIRY FARMERS - CLARENCE GARDENS (EVE)		
647	MUNDELLA FOODS PTY LTD	92	Silver
675	DENISE'S KING ISLAND MILK SUPPLY		Silver

Class 157 STRAWBERRY FRUIT NATURAL YOGHURT.

86	PAULS LIMITED	94.5	Gold
107	DAIRY FARMERS - WETHERILL PARK (SKI DIVINE)	92	Silver
202	TAMAR VALLEY DAIRY (TAMAR VALLEY STRAWBERRY YOGHURT)	92	Silver

Class 158 STRAWBERRY FRUIT SKIM MILK OR REDUCED FAT YOGHURT.

85	PAULS LIMITED	93	Silver
104	DAIRY FARMERS - WETHERILL PARK (SKI D'LITE)	92	Silver
201	TAMAR VALLEY DAIRY (STRAWBERRY LITE YOGHURT)	93.5	Silver
213	WESTHAVEN DAIRY		
274	REGAL CREAM PRODUCTS PTY LTD (BULLA LITE'N HEALTHY)	92	Silver
507	AMARINA AUSTRALIA PTY LTD		
566	DAIRY FARMERS - CLARENCE GARDENS (EVE)		
616	MUNDELLA FOODS PTY LTD		

Class 159 REAL FRUIT NATURAL YOGHURT.

28	MUNDELLA FOODS PTY LTD (JUICY PRUNE CUSTARD YOGHURT)	93.5	Silver
29	MUNDELLA FOODS PTY LTD (BANANA APPLE STRUDEL YOGHURT)	92.5	Silver
30	MUNDELLA FOODS PTY LTD (MANGO SPLIT YOGHURT)	92.5	Silver
31	MUNDELLA FOODS PTY LTD (APPLE PIE YOGHURT)	Not Received	
84	PAULS LIMITED (EXTRA LITE PASSIONFRUIT)	92.5	Silver
93	DAIRY FARMERS - WETHERILL PARK (SKI DIVINE MANGO)	92.5	Silver
105	DAIRY FARMERS - WETHERILL PARK (SKI DIVINE PURE PASSION)	93	Silver
106	DAIRY FARMERS - WETHERILL PARK (SKI DIVINE BERRY HEAVEN)	92.5	Silver
124	DAIRY FARMERS - WETHERILL PARK (SKI DIVINE FRUIT SALAD)	92.5	Silver
200	TAMAR VALLEY DAIRY (APRICOT YOGHURT)	92	Silver
461	FONTI DIARY FOODS PTY LTD (MARGARET RIVER CHEESE CO PEACH & MANGO)		
506	AMARINA AUSTRALIA PTY LTD		
565	DAIRY FARMERS - CLARENCE GARDENS (EVE PEACH, APRICOT & MANGO)	92	Silver
704	MUNDELLA FOODS PTY LTD (WOODLAND FRUITS)		

Class 160 REAL FRUIT SKIM MILK YOGHURT.

26	MUNDELLA FOODS PTY LTD (PEACHES & CREAM YOGHURT)	92	Silver
27	MUNDELLA FOODS PTY LTD (APRICOT DANISH YOGHURT)	93	Silver
83	PAULS LIMITED (EXTRA LITE WILDBERRY)	93.5	Silver
95	DAIRY FARMERS - WETHERILL PARK (DANONE DIET LITE VANILLA & PLUM)	92	Silver
96	DAIRY FARMERS - WETHERILL PARK (DANONE DIET LITE BERRY FRUITS)	92.5	Silver
98	DAIRY FARMERS - WETHERILL PARK (DANONE DIET LITE APRICOT DANISH)		
99	DAIRY FARMERS - WETHERILL PARK (DANONE DIET LITE PASSIONFRUIT)		
100	DAIRY FARMERS - WETHERILL PARK (DANONE DIET LITE FRUIT SALAD)		
113	DAIRY FARMERS - WETHERILL PARK (DANONE DIET LITE STRAWBERRY)		
199	TAMAR VALLEY DAIRY (MIXED BERRIES LITE YOGHURT)	93.5	Silver
459	FONTI DIARY FOODS PTY LTD (MARGARET RIVER CHEESE CO BLACKCURRANT 99.& FAT FREE)	92	Silver
460	FONTI DIARY FOODS PTY LTD (MARGARET RIVER CHEESE CO RASPBERRY 99.7% FAT FREE)		

Class 161 REAL FRUIT REDUCED FAT YOGHURT.

92	DAIRY FARMERS - WETHERILL PARK (SKI D'LITE BERRY BASKET)	93	Silver
94	DAIRY FARMERS - WETHERILL PARK (SKI D'LITE PASSIONFRUIT)	92	Silver
102	DAIRY FARMERS - WETHERILL PARK (SKI D'LITE PEACH & MANGO)	92	Silver
212	WESTHAVEN DAIRY		
279	REGAL CREAM PRODUCTS PTY LTD (BULLA LITE'N HEALTHY WILDBERRY)	92	Silver
280	REGAL CREAM PRODUCTS PTY LTD (BULLA LITE'N HEALTHY PASSIONFRUIT)	94	Gold
281	REGAL CREAM PRODUCTS PTY LTD (BULLA LITE'N HEALTHY FRUIT SALAD)	93	Silver

282	REGAL CREAM PRODUCTS PTY LTD (BULLA LITE'N HEALTHY APRICOT)	92	Silver
284	REGAL CREAM PRODUCTS PTY LTD (BULLA LITE'N HEALTHY BLACK CHERRY)	Not Received	
295	REGAL CREAM PRODUCTS PTY LTD (BULLA LITE'N HEALTHY MANGO)	Not Received	
457	FONTI DIARY FOODS PTY LTD (MARGARET RIVER CHEESE CO WILDBERRY REDUCED FAT)	92	Silver
458	FONTI DIARY FOODS PTY LTD (MARGARET RIVER CHEESE CO APRICOT REDUCED FAT)	92.5	Silver

Class 165 SOUR CREAM/CULTURED CREAM.

22	NATIONAL FOODS (FARMERS UNION SOUR CREAM)	93	Silver
42	NATIONAL FOODS NORTH ROCKS (MEADOWVALE SOUR CREAM)	92	Silver
47	NORCO/PAULS (NORCO SOUR CULTURED)	93	Silver
82	PAULS LIMITED (SOUR LIGHT CREAM)	Not Received	
109	DAIRY FARMERS - WETHERILL PARK	93	Silver
226	KING ISLAND DAIRIES PTY LTD (KING ISLAND SOUR CREAM)		
278	REGAL CREAM PRODUCTS PTY LTD (BULLA SOUR CREAM)	93	Silver
432	BURRA FOODS PTY LTD (GIPPSLAND SOUR CREAM)		
674	DENISE'S KING ISLAND MILK SUPPLY (SOUR CREAM)		

Class 166 SOUR CREAM/CULTURED CREAM.

9	NATIONAL FOODS (FARMERS UNION SOUR CREAM)		
41	NATIONAL FOODS NORTH ROCKS (MEADOWVALE SOUR LIGHT CREAM)		
69	PAULS LIMITED (SOUR EXTRA LIGHT CREAM)		
108	DAIRY FARMERS - WETHERILL PARK	Not Received	
564	DAIRY FARMERS - CLARENCE GARDENS (DAIRY FARMERS DAIRY VALE SOUR LIGHT)		
580	ELGAAR FARM		

Class 167 CREAM. Minimum milk fat content of 35% which may be artificially thickened but not to contain any other additives.

21	NORCO/PAULS (NORCO THICKENED)	93	Silver
39	NATIONAL FOODS NORTH ROCKS (MEADOWVALE THICKENED CREAM)	94	Gold
40	NATIONAL FOODS NORTH ROCKS (MEADOWVALE FRESH CREAM)	92	Silver
80	PAULS LIMITED (THICKENED CREAM)		
312	REGAL CREAM PRODUCTS PTY LTD (BULLA COUNTRY STYLE CREAM THICKENED)		
313	REGAL CREAM PRODUCTS PTY LTD (BULLA CREAM THICKENED)		
431	DAIRY FARMERS - LIDCOMBE		
563	DAIRY FARMERS - CLARENCE GARDENS (DAIRY VALE THICKENED)		
591	ELGAAR FARM		
594	DAIRY FARMERS - HEXHAM (OAK CLASSIC)	93.5	Silver
595	DAIRY FARMERS - HEXHAM		
615	DAIRY FARMERS - BOOVAL		
617	DAIRY FARMERS - BOMADERRY		

Class 168 RICH CREAM. Minimum milk fat content of 48%.

263	KING ISLAND DAIRIES PTY LTD (KING ISLAND PURE CREAM)		
419	BURRA FOODS PTY LTD (GIPPSLAND RICH CREAM)	93	Silver
562	DAIRY FARMERS - CLARENCE GARDENS (DAIRY VALE)	92	Silver
578	ELGAAR FARM		

Class 173 CUSTARD. Plain Vanilla flavoured.

38	NATIONAL FOODS NORTH ROCKS (UNITED DAIRIES)	93	Silver
91	PAULS LIMITED	93	Silver
561	DAIRY FARMERS - CLARENCE GARDENS (DAIRY VALE)	92	Silver
602	DAIRY FARMERS - HEXHAM (LIGHT)	92.5	Silver
625	DAIRY FARMERS - HEXHAM (POURING)		

Class 174 CUSTARD. Flavours, other than vanilla.

78	PAULS LIMITED (CHOCOLATE)	93	Silver
560	DAIRY FARMERS - CLARENCE GARDENS (DAIRY VALE)	92	Silver

Class 175 DAIRY BASED DESSERTS. Frozen or Non Frozen (eg, creme caramel, fromage frais, etc).

25	MUNDELLA FOODS PTY LTD (SWISS CREAMY CUSTARD YOGHURT)	92	Silver
77	PAULS LIMITED (BLAST OFF BUBBLEGUM)	93	Silver
211	WESTHAVEN DAIRY (VANILLA DAIRY DESSERT)	92	Silver
550	DAIRY FARMERS - CLASSIQUE (CREATIVE CRÈME NEUTRAL)	92.5	Silver
551	DAIRY FARMERS - CLASSIQUE (CREATIVE CRÈME CHOCOLATE)	93	Silver
552	DAIRY FARMERS - CLASSIQUE (LEMON LIME BAVAROIS WITH RASPBERRY COULIS)	94	Gold
553	DAIRY FARMERS - CLASSIQUE (CHOCOLATE CRÈME WITH RASPBERRY COULIS)	94	Gold

554	DAIRY FARMERS - CLASSIQUE (VANILLA CRÈME WITH MACADAMIA GLAZE)	94.5	Gold
555	DAIRY FARMERS - CLASSIQUE (CAMEL CRÈME)	93.5	Silver
568	DAIRY FARMERS - CLASSIQUE (CHOCOLATE CRÈME)	93	Silver

Class 176 MOUSSE.

97	DAIRY FARMERS - WETHERILL PARK (CADBURY)	93	Silver
649	EXQUISINE (STRAWBERRY)	95	Gold
670	EXQUISINE (CHOCOLATE)	95	Gold
672	EXQUISINE (HAZELNUT CHOCOLATE)	95	Gold

Class 180 CHOCOLATE. Flavoured Full Cream Milk.

20	NORCO/PAULS (NORCO DAIRYFIELD FM)	95	Silver
37	NATIONAL FOODS LTD - TAREE (CLASSIC)	95	Silver
67	DAIRY FARMERS - LIDCOMBE (MOOVE)		
76	PAULS LIMITED (CHOCOLATE BREAKA)		
123	DAIRY FARMERS - SHEPPARTON (OAK CLASSIC)		
125	DAIRY FARMERS - SHEPPARTON (OAK DARE)		
343	DAIRY FARMERS - LIDCOMBE (OAK CLASSIC)		
558	PAULS LIMITED (CHOCOLATE BREKA)	Not Received	
559	DAIRY FARMERS - CLARENCE GARDENS (OAK CLASSIC)	95.5	Silver
590	DAIRY FARMERS - BOMADERRY (MOOVE)		
604	DAIRY FARMERS - HEXHAM (OAK CLASSIC)		
608	DAIRY FARMERS - LIDCOMBE (OAK DARE)	97	Gold
626	DAIRY FARMERS - BOOVAL (CRUISE)	93	
637	DAIRY FARMERS - BOOVAL (OAK DARE)		

Class 181 CHOCOLATE. Reduced Fat Flavoured Milk.

36	NATIONAL FOODS LTD - TAREE (GARY)	96	Silver
627	DAIRY FARMERS - BOMADERRY (OAK LITE)		

Class 182 STRAWBERRY. Flavoured Full Cream Milk.

19	NORCO/PAULS (NORCO DAIRYFIELD FM)		
23	NATIONAL FOODS LTD - TAREE (CLASSIC)		
122	DAIRY FARMERS - SHEPPARTON (OAK CLASSIC)		
612	DAIRY FARMERS - LIDCOMBE (OAK CLASSIC)		
613	DAIRY FARMERS - LIDCOMBE (MOOVE)	98	Gold
623	DAIRY FARMERS - BOOVAL (OAK CLASSIC)	97	Gold
624	DAIRY FARMERS - BOOVAL (CRUISE)	98	Gold

Class 183 ICED COFFEE. Flavoured Full Cream Milk.

34	NATIONAL FOODS LTD - TAREE (CLASSIC CAFÉ LATTA)	98.5	Gold
75	PAULS LIMITED (BREAKA ICED COFFEE)		
120	DAIRY FARMERS - SHEPPARTON (OAK CLASSIC)	95	Silver
121	DAIRY FARMERS - SHEPPARTON (OAK DARE ESPRESSO COFFEE)	95	Silver
547	DAIRY FARMERS - CLARENCE GARDENS (DAIRY VALE MAX)		
609	DAIRY FARMERS - LIDCOMBE (OAK DARE)		
610	DAIRY FARMERS - LIDCOMBE (OAK CLASSIC)		
611	DAIRY FARMERS - LIDCOMBE (MOOVE)		
622	DAIRY FARMERS - BOOVAL (CRUISE)	97.5	Gold

Class 184 FLAVOURS. Other Full Cream Milk.

18	NORCO/PAULS (NORCO DAIRYFIELD FM VANILLA)		
45	NATIONAL FOODS LTD - TAREE (CLASSIC ENGLISH TOFFEE)	97	Gold
117	DAIRY FARMERS - SHEPPARTON (OAK CLASSIC VANILLA MALT)		
118	DAIRY FARMERS - SHEPPARTON (OAK DARE CAMEL RUSH)		
119	DAIRY FARMERS - SHEPPARTON (OAK JUST NATURAL CHOCOLATE, MALT & HONEY)	97.5	Gold
136	DAIRY FARMERS - SHEPPARTON (OAK DARE JAMAICAN CHOCOLATE WITH RUM FLAVOURING)		
557	DAIRY FARMERS - CLARENCE GARDENS (DAIRY VALE EGG NOG)	99	Gold
592	DAIRY FARMERS - LIDCOMBE (OAK JUST NATURAL CHOCOLATE HONEY & MALT)		
605	DAIRY FARMERS - LIDCOMBE (OAK CLASSIC VANILLA MALT)	95	Silver
606	DAIRY FARMERS - LIDCOMBE (OAK DARE JAMAICAN CHOCOLATE)		
607	DAIRY FARMERS - LIDCOMBE (OAK DARE CAMEL RUSH)		
619	DAIRY FARMERS - BOOVAL (OAK CLASSIC VANILLA MALT)		
620	DAIRY FARMERS - BOOVAL (OAK DARE CAMEL RUSH)		
621	DAIRY FARMERS - BOOVAL (OAK JUST NATURAL CHOCOLATE, HONEY & MALT)	96.5	Silver

Class 185 FLAVOURS. Other Reduced Cream Milk.

32	NATIONAL FOODS LTD - TAREE (GARY BANANA)		
593	DAIRY FARMERS - BOMADERRY (OAK LITE VANILLA MALT)		
618	DAIRY FARMERS - BOOVAL (JACARANDA COFFEE)	96	Silver

Class 186 LONGLIFE MILK. Flavoured.

74	PAULS LIMITED (BREAKA ICED COFFEE)		
----	------------------------------------	--	--

6 DAIRY PRODUCE

Class 190 VANILLA.

3	NORCO CO-OPERATIVE LTD (CAPE BYRON)	98	Gold
4	NORCO CO-OPERATIVE LTD (COUNTRYSTYLE)	97.5	Silver
115	PETERS & BROWNES GROUP (CADBURY LIGHT)	95	
134	DAIRY FARMERS - TAMWORTH		
208	WENDY'S (WENDY'S VANILLA DREAM)	99	Gold
311	REGAL CREAM PRODUCTS PTY LTD (BULLA ICE CREAM)		
319	RIVIERA ICE CREAM		
344	STREETS ICE CREAM (BLUE RIBBON LIGHT)		
345	STREETS ICE CREAM (BLUE RIBBON)		
418	BOW'S NATURAL ICE CREAM		
429	CHUCK'S ICE CREAM PTY LTD (VANILLA BEAN)		
511	AMARINA AUSTRALIA PTY LTD		
577	PETERS & BROWNES GROUP (CADBURY CREAMY)	97	Silver
720	HARRY & LARRY'S HOME MADE ICE CREAM (PREMIUM)	Not Received	

Class 191 CHOCOLATE.

2	NORCO CO-OPERATIVE LTD (PRESTIGE)	99.5	Gold
133	DAIRY FARMERS - TAMWORTH		
310	REGAL CREAM PRODUCTS PTY LTD (BULLA ICE CREAM)		
317	STREETS ICE CREAM (BLUE RIBBON)	98.5	Gold
330	RIVIERA ICE CREAM		
350	STICKY FINGERS		
354	STREETS ICE CREAM (BLUE RIBBON LIGHT)		
417	BOW'S NATURAL ICE CREAM (SWISS CHOCOLATE)		
428	CHUCK'S ICE CREAM PTY LTD	98	Gold

Class 192 ICE CREAM. With other foods added; to include fruits, fruit variegates, nuts, confectionery items and the like.

33	NORCO CO-OPERATIVE LTD (PRESTIGE MACADAMIA NUTS)		
35	NORCO CO-OPERATIVE LTD (CAPE BYRON PECAN CARAMEL RIBBON)	96	Silver
207	WENDY'S (WICKED CHOCOLATE)	97	Silver
245	PETERS & BROWNES GROUP (CADBURY DAIRY MILK CHOCOLATE & RICH HONEYCOMBE)	96.5	Silver
246	PETERS & BROWNES GROUP (CADBURY JELLY CHOC CHIP PREMIUM VANILLA WITH FLAKES OF OLD GOLD CHOCOLATE & A SWIRL OF RASPBERRY JELLY)	97.5	Silver
247	PETERS & BROWNES GROUP (CADBURY DAIRY MILK CREAMY VANILLA WITH MILK CHOCOLATE CHIPS)		
248	PETERS & BROWNES GROUP (CADBURY TOP DECK VANILLA & CHOCOLATE)	96.5	Silver
249	PETERS & BROWNES GROUP (CADBURY CARAMELLO CARAMEL &	97.5	Silver
290	RICKETTS POINT FINE FOODS (MUSCAT & RAISINS)	98	Gold
291	RICKETTS POINT FINE FOODS (CUMQUAT & BRANDY)	96	Silver
292	RICKETTS POINT FINE FOODS (LIME DELICIOUS)	99.5	Gold
293	STREETS ICE CREAM (BLUE RIBBON LIGHT PASSIONFRUIT SORBET)		
294	STREETS ICE CREAM (BLUE RIBBON MANGO & CREAM)		
320	STREETS ICE CREAM (BLUE RIBBON CREAMY CARAMEL)		
334	WENDY'S (AFTER DINNER MINT)		
335	WENDY'S (WILD BOYSENBERRY)	97.5	Silver
336	WENDY'S (TIRAMISO)		
337	WENDY'S (WHITE CHOCOLATE)	Not Received	
338	WENDY'S (DOUBLE MANGO DELUXE)	99	Gold
341	RIVIERA ICE CREAM (HUNKEY CRUNCH)		
348	STICKY FINGERS (WITH RHUBARB)		
349	STICKY FINGERS (WITH TOFFEE PRALINE)		
412	BOW'S NATURAL ICE CREAM (BANANA SUPREME)	98.5	Gold
413	BOW'S NATURAL ICE CREAM (HAWAIIAN PINEAPPLE)	98	Gold
414	BOW'S NATURAL ICE CREAM (CHOC FRUIT N NUT)	96.5	Silver
415	BOW'S NATURAL ICE CREAM (PASSIONFRUIT)	97	Silver
416	BOW'S NATURAL ICE CREAM (BUTTER PECAN)		
426	CHUCK'S ICE CREAM PTY LTD (PRUNE & COGNAC)		
427	CHUCK'S ICE CREAM PTY LTD (HONEY CRUNCH)		
534	AMARINA AUSTRALIA PTY LTD (WITH MANGO FRUIT PIECES)	96.5	Silver
706	HARRY & LARRY'S HOME MADE ICE CREAM (CHRISTMAS PUDDING)		
717	HARRY & LARRY'S HOME MADE ICE CREAM (CAPPUCCINO)	96.5	Silver
719	HARRY & LARRY'S HOME MADE ICE CREAM (CHOCOLATE RIPPLE)		
728	HARRY & LARRY'S HOME MADE ICE CREAM (MACADAMIA)	Not Received	

Class 193 PREMIUM.

12	NORCO CO-OPERATIVE LTD (CAPE BYRON CHOCOLATE MUDCAKE)	98.5	Gold
192	WENDY'S (HONEYCOMB CRUNCH)	97	Silver
242	PETERS & BROWNES GROUP (BROWNES CONNOISSEUR MACADAMIA MAMBO ICE CREAM)	97.5	Silver

243	PETERS & BROWNES GROUP (BROWNES CONNOISSEUR COOKIE CREAM COMMOTION VANILLA ICE CREAM)	99	Gold
244	PETERS & BROWNES GROUP (BROWNES CONNOISSEUR CAFE GRANDE COFFEE ICE CREAM)		
252	WENDY'S (BUTTERSCOTCH BRICKLE)		
283	WENDY'S (DOUBLE INDULGENCE)	97	Silver
286	RICKETTS POINT FINE FOODS (VANILLA MALTED)		
287	RICKETTS POINT FINE FOODS (ELDEFLOWER)	99.5	Gold
288	RICKETTS POINT FINE FOODS (HONEYED GINGER)	96.5	Silver
289	RICKETTS POINT FINE FOODS (CHOCOLATE & BOURBON)	99.5	Gold
327	RIVIERA ICE CREAM (BOYSENBERRY)	96	Silver
328	RIVIERA ICE CREAM (COFFEE DELUXE)		
339	WENDY'S (NUTTY BUTTER)	99	Gold
340	WENDY'S (OLDE ENGLISH TOFFEE)	96	Silver
420	BOW'S NATURAL ICE CREAM (BOYSENBERRY)	96	Silver
422	BOW'S NATURAL ICE CREAM (APRICOT BRANDY)	97	Silver
443	BOW'S NATURAL ICE CREAM (COFFEE FUDGE)	98	Gold
453	BOW'S NATURAL ICE CREAM (APPLE PIE)	98	Gold
454	BOW'S NATURAL ICE CREAM (STRAWBERRY SUPREME)	98	Gold

Class 194 FROZEN YOGHURT.

43	NORCO CO-OPERATIVE LTD (FRUIT SALAD)		
132	DAIRY FARMERS - TAMWORTH (SKI)	96.5	Silver
275	REGAL CREAM PRODUCTS PTY LTD (BULLA FRUIT'N YOGURT WILDBERRY)	97.5	Silver
276	REGAL CREAM PRODUCTS PTY LTD (BULLA FRUIT'N YOGURT STRAWBERRY)	97.5	Silver
277	REGAL CREAM PRODUCTS PTY LTD (BULLA FROZEN YOGURT VANILLA)	97.5	Silver
306	REGAL CREAM PRODUCTS PTY LTD (BULLA FRUIT'N YOGURT FRUIT SALAD)	96.5	Silver
332	WENDY'S (TRIPLE BERRY YOGHURT D'LITE)	99.5	Gold
333	WENDY'S (APRICOT YOGHURT D'LITE)	96	Silver
347	STICKY FINGERS (QUINCE)	92	
425	CHUCK'S ICE CREAM PTY LTD (MANGO)	98.5	Gold
503	AMARINA AUSTRALIA PTY LTD (WATTLE SEED & BUTTERSCOTCH)		
504	AMARINA AUSTRALIA PTY LTD (DAVIDSON PLUM)	Not Received	
636	DAIRY FARMERS - HEXHAM (OAK STRAWBERRY)		

Class 195 NOVELTIES. Such as ice cream cakes, traditional ethnic products, stick lines, cones, extruded products, frozen dairy novelties not included in any other class.

228	PETERS & BROWNES GROUP (CADBURY CRUNCHIE ICE CREAM WITH HONEYCOMB PIECES)	99	Gold
239	PETERS & BROWNES GROUP (CADBURY FRUIT & NUT RICH CHOCOLATE ICE CREAM)	98	Gold
241	PETERS & BROWNES GROUP (CADBURY PICNIC ICE CREAM)	98	Gold
250	PETERS & BROWNES GROUP (CADBURY FLAKE CREAMY ICE CREAM)	96	Silver
285	REGAL CREAM PRODUCTS PTY LTD (BULLA WHITE POINTER BANANA BITE)		
308	REGAL CREAM PRODUCTS PTY LTD (BULLA WHITE POINTER CHOC CHOMP)		
314	REGAL CREAM PRODUCTS PTY LTD (BULLA PETITE CREAMS BELGIAN SELECTION)		
315	REGAL CREAM PRODUCTS PTY LTD (BULLA PETITE CREAMS GOURMET SELECTION)		
316	REGAL CREAM PRODUCTS PTY LTD (BULLA PETITE CREAMS CLASSIC MINI SUPER PREMIUM CHOCOLATE COATED ICE CREAM STICK)		

Class 196 GELATI.

298	PURE GELATO ENTERPRISES P/L (MANGO)		
299	PURE GELATO ENTERPRISES P/L (VANILLA)	98	Gold
300	PURE GELATO ENTERPRISES P/L (CHOCOLATE)	99	Gold
301	PURE GELATO ENTERPRISES P/L (COFFEE)	97	Silver
302	PURE GELATO ENTERPRISES P/L (TITAMISEL)	97	Silver
303	PURE GELATO ENTERPRISES P/L (HAZELNUT)	99	Gold
346	STICKY FINGERS (BLACKBERRY)	96.5	Silver
715	HARRY & LARRY'S HOME MADE ICE CREAM (LEMON SORBET)	98	Gold

Class 198 INNOVATION AWARD.

304	REGAL CREAM PRODUCTS PTY LTD (BULLA WHITE POINTER - CHOC ICE CREAM)	Not Received	
589	PAULS LIMITED	Not Received	

Class 199 RETAIL PACKAGED CHEESE.

321	UNITED MILK TASMANIA (TABLE CAPE MILD CHEDDAR RINDLESS)	85	Silver
430	CONNOISSEUR FOODS PTY LTD (CHIVES CHEESE SPREADS)	83	Silver
438	BONLAC FOODS (BODALLA VINTAGE)	90	Gold
439	BONLAC FOODS (BODALLA TASTY)	93	Gold
440	BONLAC FOODS (BODALLA MILD)	91	Gold
705	LEMNOS CHEESE PTY LTD (SMART PACK)	88	Silver

Class 200 FOODSERVICE PACKAGED CHEESE.

436	BONLAC FOODS (BODALLA NATURAL CHEDDAR CHEESE SLICES)	80	Silver
437	BONLAC FOODS (BEGA PROCESSED CHEDDAR CHEESE SLICES)	87	Silver
692	LEMNOS CHEESE PTY LTD (DELI PACK)	86	Silver

Class 201 RETAIL PACKAGED MILK.

588	PAULS LIMITED	92	Gold
-----	---------------	----	------

Class 300 UNBAKED DECORATED

738	CHEASECAKE HEAVEN - (BLUEBERRY DELIGHT)	95	Gold
-----	-----------------------------------------	----	------

Class 301 BAKED, UNDECORATED.

148	MARK'S QUALITY CAKES (SOUP CREAM)	91.5	
737	CHEASECAKE HEAVEN - (CHOC NUT SURPRISE)	94	Gold

Class 302 UNBAKED, DECORATED.

137	MISS C WILLIAMS (MIXED BERRY)	92	Silver
140	MR G SULLIVAN	90	
141	MR A STEWART (LIME)	91	
144	MISS A WESTON (BLACK FOREST)	92.5	Silver
149	D SKINNER (CHERRY, CHOC, COCONUT)	92	Silver
150	MRS J TUCKER (PINA COLADA)	91	
151	MRS J TUCKER (BRANDY ALEXANDER)	89	
153	MISS N CAVIGAN (STRAWBERRY & CHOCOLATE)	90.5	
165	M DELIA (KIRSBERRY)	96	
166	C MATTERS (RUM & RAISAN)	91	
167	Z THOMSON HADLEY (JAFFA)	Not Received	
169	P RUDD (CHOCOLATE & STRAWBERRY)	89.5	
171	G GLADMAN (CHOC/COFFEE LIQUER)	94	Gold
173	G GLADMAN (CRUNCH)	88	
174	P TEBBS (PEANUT BUTTER CRUNCH)	90	
175	J BIRD (MONOPOLY)	94	Gold
176	K HEBBARD (ORANGE & STRAWBERRY)	88	
177	S ALEXANDER (HONEY COMB)	88	
178	M MILLER (CHOCOLATE)	92.5	Silver
179	V CARR (AUSTRALIANA)	89	
180	S ROGERS (SWISS CHOCOLATE)	91.5	
182	B KELLY (CAPPUCINO)	90	

Class 303 UNBAKED, UNDECORATED.

152	MRS J TUCKER (APRICOT NECTAR)	94	Gold
-----	-------------------------------	----	------

Class 304 BAKED, DECORATED.

139	MR L WATSON	96.5	Gold
142	MISS J ROSENBERG (VEGETABLE SELECTION WITH PAETA)	Not Received	
143	MISS J ROSENBERG (CINNAMON, ORANGE)	Not Received	
145	MS S NEVILLE (APRICOT)	93.5	Silver
147	D EDELSTEN (BLUEBERRY)	89	
160	A WHITTY (LEMON & POPPY SEED)	91.5	
168	D HILL (RICOTTA)	91.5	
170	T DREW (TIRA MISU)	Not Received	
181	S ROGERS (BAKED CHOCOLATE & RAISAN)	91	

Class 305 BAKED, UNDECORATED.

146	MRS N WILSON (MOIST & RICH WITH A SWIG OF BRANDY)	94.5	Gold
159	MR P GEORGE (BERRY)	87	

Class 400 FETA

210	WESTHAVEN DAIRY (GOATS MILK FETA)	93	Silver
355	RIVERINA CHEESE P/L	94	Gold
488	WILLOWBRAE CHEVRE CHEESE (FETA - MARINATED (GOAT MILK))	92	Silver
694	LEMNOS CHEESE PTY LTD (GOAT FETTA)	92.5	Silver

Class 401 ANY TYPE MADE FROM MILK OTHER THAN COW'S MILK.

209	WESTHAVEN DAIRY (GOATS MILK CHEVRE)	92.5	Silver
215	TASMANIAN HIGHLAND CHEESES (TRADITIONAL FARMHOUSE CHEVRE GOAT - FRESH)	92	Silver
217	TASMANIAN HIGHLAND CHEESES (HIGHLAND GOAT CURD)	94.5	Gold
342	RIVERINA CHEESE P/L (PECORELLA)	92	Silver

353	RIVERINA CHEESE P/L (TABLE PECORINO)	94	Gold
685	KYTREN FINE QUALITY GOATS CHEESE (FRESH CURD)	93	Silver
693	KYTREN FINE QUALITY GOATS CHEESE (FRESH PLAIN LOG)	93.5	Silver
695	KYTREN FINE QUALITY GOATS CHEESE (ASH COALED LOG)	92	Silver
701	MILAWA CHEESE CO PTY LTD (TARRAWINGEE GOLD SHEEPS CHEESE - SMEAR RIPENED)	94	Gold
702	MILAWA CHEESE CO PTY LTD (MILAWA CHEVRE GOATS CHEESE - FRESH UNRIPENED)	94	Gold
703	MILAWA CHEESE CO PTY LTD (MILAWA AFFINE GOATS CHEESE - ASHED WHITE MOULD)	93	Silver
716	KYTREN FINE QUALITY GOATS CHEESE (WHITE MOULD MATURE CHEESE)	92.5	Silver

Class 402 OTHER. Includes Dips, Spreads, Pate, Sauces, Club Cheeses.

490	WILLOWBRAE CHEVRE CHEESE (CHEVRE & TOMATO)	Not Received	
-----	--------------------------------------------	--------------	--

*“Thanks very much
that was delicious.”*

PHILADELPHIA®
Cheesecake
CHALLENGE



EXHIBITORS

- ABC Cheese Factory Pty Ltd 37 Bate St Central Tilba NSW 2546: 144
 Adora Handmade Chocolates 10 Homer St Earwood NSW 2150: 119, 122, 123, 124
 Alexander S C/- Serco-Gardner M P O Box 21 Milpo Puckapunyal Vic 3662: 302
 Amarina Australia Pty Ltd 1/6 Mc Gowan St Pooraka SA 5095: 155, 156, 158, 159, 190, 192, 194
 Ashgrove Farm Cheese 6173 Bass Hwy Elizabeth Town Tas 7304: 143, 147
 Bega Co-Operative Society P O Box 123 Bega NSW 2550: 105, 109, 125, 128, 141, 143, 144, 147
 Benedicts P O Box 3131 Murrumbena Vic 3163: 119, 122
 Bird J C/- Serco-Gardner M P O Box 21 Milpo Puckapunyal Vic 3662: 302
 Black Swan Ascot Vale Vic 3032: 141, 142, 153
 Bonlac Foods 24-48 York St South Melbourne Vic 3205: 130, 139, 199, 200
 Bonlac Foods - Cobden 129 Curdie St Cobden Vic 3266: 101, 102, 106, 109, 110, 111, 112
 Bonlac Foods - Stanhope Midland Hwy Stanhope Vic 3623: 125, 126, 127, 128
 Bonlac Foods Limited 31-35 Lardner Rd Drouin Vic 3818: 101, 102, 105, 106, 107, 108, 125, 126, 127
 Bonlac Foods Ltd - Cororooke P O Box 54 Cororooke Vic 3254: 135, 140
 Bonlac Foods Ltd - Dandenong P O Box 13 Dandenong Vic 3175: 110, 113, 114
 Bow'S Natural Ice Cream Shop 21A Mid Valley Shopping Centre Morwell Vic 3840: 190, 191, 192, 193
 Burra Foods Pty Ltd P O Box 379 Korumburra Vic 3950: 140, 155, 156, 165, 168
 Carr V C/- Serco-Gardner M P O Box 21 Milpo Puckapunyal Vic 3662: 302
 Cavigan N 38 Galway St Seaford Vic 3198: 302
 Chris' Greek Dips 24 Commercial Dve Thomastown Vic 3075: 153
 Chuck'S Ice Creamery Pty Ltd 2 Fitzgibbon St Richmond Vic 3121: 190, 191, 192, 194
 Charles Sturt University Cheese Factory : Locked Bag 588 Wagga Wagga NSW 2678: 125, 140, 141, 143
 Connoisseur Foods Pty Ltd 399 Hume Hwy Yagoona NSW 2199: 130, 199
 Dairy Farmers - Bomaderry P O Box 72 Lidcombe NSW 2141: 167, 180, 181, 185
 Dairy Farmers - Booval P O Box 72 Lidcombe NSW 2141: 102, 145, 167, 180, 182, 183, 184, 185
 Dairy Farmers - Clarence Gardens P O Box 72 Lidcombe NSW 2141: 156, 158, 159, 166, 167, 168, 173, 174, 180, 183, 184
 Dairy Farmers - Classique P O Box 72 Lidcombe NSW 2141: 175
 Dairy Farmers - Gloucester P O Box 72 Lidcombe NSW 2141: 101, 102, 106, 110, 111, 112
 Dairy Farmers - Hexham P O Box 72 Lidcombe NSW 2141: 111, 140, 167, 173, 180, 194
 Dairy Farmers - Jervois P O Box 72 Lidcombe NSW 2141: 125, 126, 127, 128, 129
 Dairy Farmers - Lidcombe P O Box 72 Lidcombe NSW 2141: 167, 180, 182, 183, 184
 Dairy Farmers - Malanda P O Box 72 Lidcombe NSW 2141: 140
 Dairy Farmers - Shepparton P O Box 72 Lidcombe NSW 2141: 180, 182, 183, 184
 Dairy Farmers - Simpson P O Box 72 Lidcombe NSW 2141: 136, 139, 147
 Dairy Farmers - Tamworth P O Box 72 Lidcombe NSW 2141: 190, 191, 194
 Dairy Farmers - Toowoomba P O Box 72 Lidcombe NSW 2141: 135, 138
 Dairy Farmers - Wetherill Park P O Box 72 Lidcombe NSW 2141: 157, 158, 159, 160, 161, 165, 166, 176
 Delia M C/- Serco-Gardner M P O Box 21 Milpo Puckapunyal Vic 3662: 302
 Denise'S King Island Milk Supply R S D 14 Currie King Island Tas 7256: 145, 156, 165
 Drew T C/- Serco-Gardner M P O Box 21 Milpo Puckapunyal Vic 3662: 304
 Edelsten D C/- Serco-Gardner M P O Box 21 Milpo Puckapunyal Vic 3662: 304
 Elgaar Farm P O Box 17 Deloraine Tas 7304: 125, 126, 128, 140, 147, 155, 166, 167, 168
 Exquisite 230 Lygon St East Brunswick Vic 3057: 150, 152, 176
 Florida Cheese P O Box 88 Bundoora Vic 3083: 135, 139, 140, 143
 Fonti Dairy Foods Pty Ltd 27 Howe St Osborne Park WA 6017: 137, 145, 147, 155, 156, 159, 160, 161
 Fresh Cheese Co (Aust) Pty Ltd 50 Weston St Brunswick Vic 3056: 135, 139, 140, 143, 145
 George P 299 Brunswick St Fitzroy Vic 3065: 305
 Gladman G C/- Serco-Gardner M P O Box 21 Milpo Puckapunyal Vic 3662: 302
 Gladman G C/- Serco-Gardner M P O Box 21 Milpo Puckapunyal Vic 3662: 302
 Haighs Manufacturing Pty Ltd 2 Douglas St Parkside SA 5063: 115, 117, 118, 119, 120, 121, 122, 123, 124
 Harry & Larry'S Home Made Ice Cream 17 Tinning St Brunswick Vic 3056: 190, 192, 196
 Hebbard K C/- Serco-Gardner M P O Box 21 Milpo Puckapunyal Vic 3662: 302
 Heritage Fine Chocolates P O Box 464 Mulgrave North Vic 3170: 115, 116, 117, 118, 119, 122, 123, 124
 Hill D C/- Serco-Gardner M P O Box 21 Milpo Puckapunyal Vic 3662: 304
 Jean-Pierre Gourmet P/L 37 Korong Rd Heidelberg West Vic 3081: 151
 Jindi Cheese Pty Ltd Old Telegraph Rd Jindivick Vic 3818: 137
 John Walker Chocolatier P O Box 1004 Morley WA 6943: 119, 120, 121, 122, 124
 Kelly B C/- Serco-Gardner M P O Box 21 Milpo Puckapunyal Vic 3662: 302
 King Island Dairies Pty Ltd P O Box 105 Currie King Island Tas 7256: 128, 137, 138, 146, 147, 165, 168
 Kytren Fine Quality Goats Cheese Lot 99 Mc Knee Dve Gidgeyannup WA 6083: 401
 Lacrum Cheese P/L P O Box 82 Smithton Tas 7330: 137, 146
 Lactos Tasmania P O Box 844 Burnie Tas 7320: 136, 137, 138, 140, 141, 142, 143, 144, 146, 147
 Lemnos Cheese Pty Ltd 10 Bungaleen Crt Dandenong South Vic 3175: 135, 145, 155, 199, 200, 400
 Maffra Farm House Cheeses C/- P O Box 121 Tinamba Vic 3859: 127, 136
 Marks Quality Cakes 25 The Circle, Altona East Vic 3025: 301
 Matters C C/- Serco-Gardner M P O Box 21 Milpo Puckapunyal Vic 3662: 302
 Milawa Cheese Co Pty Ltd C/- Milawa Post Office Milawa Vic 3678: 137, 138, 146, 401
 Miller M C/- Serco-Gardner M P O Box 21 Milpo Puckapunyal Vic 3662: 302
 Mundella Foods Pty Ltd 163 Balcatta Rd Balcatta WA 6021: 140, 145, 153, 155, 156, 158, 159, 160, 175
 National Foods 128 Maurice Rd Murray Bridge SA 5253: 125, 126, 127, 128, 129, 139, 165, 166
 National Foods Ltd - Taree P O Box 318 Taree NSW 2430: 180, 181, 182, 183, 184, 185
 National Foods North Rocks P O Box 6064 Parramatta Business Centre NSW 2150: 165, 166, 167, 173
 Neville S 46 Exchange Pl Adelaide SA 5000: 304
 Norco Co-Operative Ltd P O Box 486 Lismore NSW 2480: 111, 125, 127, 129, 190, 191, 192, 193, 194
 Norco/Pauls North St Raleigh NSW 2454: 165, 167, 180, 182, 184
 Pantalica Cheese Lot 15 Trawalla Ave Thomastown Vic 3074: 135, 139, 140
 Patons Macadamia Plantations P/L 17 Rushdale St Knoxfield Vic 3180: 123
 Pauls Limited 842 Wellington Rd Rowville Vic 3178: 180, 198, 201
 Pauls Limited P O Box 212 Monto Qld 4630: 101, 102, 103, 104
 Pauls Limited P O Box 3012 South Brisbane Qld 4101: 140, 153, 155, 156, 157, 158, 159, 160, 165, 166, 167, 173, 174, 175, 180, 183, 186
 Peters & Brownes Group P O Locked Bag 3 Balcatta WA 6021: 190, 192, 193, 195
 Pink Lady Chocolates 13 Hume St Huntingdale Vic 3166: 115, 116, 117, 118, 119, 120, 122, 124
 Pure Gelato Enterprises P/L P O Box 364 Kingsgrove NSW 2208: 196
 Regal Cream Products Pty Ltd P O Box 308 North Melbourne Vic 3051: 140, 141, 142, 158, 161, 165, 167, 190, 191, 194, 195, 198
 Ricketts Point Fine Foods 257 Bluff Rd Sandringham Vic 3191: 192, 193
 Riverina Cheese P/L P O Box 976 Leeton NSW 2705: 140, 145, 400, 401
 Riviera Ice Cream P O Box 194 Lakes Entrance Vic 3909: 190, 191, 192, 193
 Rogers S C/- Serco-Gardner M P O Box 21 Milpo Puckapunyal Vic 3662: 304
 Rogers S C/- Serco-Gardner M P O Box 21 Milpo Puckapunyal Vic 3662: 303
 Rosenberg J 3/14 Park Ave Glenhuntly Vic 3163: 304
 Rudd P C/- Serco-Gardner M P O Box 21 Milpo Puckapunyal Vic 3662: 302
 Skinner D C/- Serco-Gardner M P O Box 21 Milpo Puckapunyal Vic 3662: 302
 Stewart A 3 Croxton Dve Melton Vic 3337: 302
 Sticky Fingers Murray Street Pier Hobart Tas 7000: 191, 192, 194, 196
 Streets Ice Cream 12 Bonar St Anndcliffe NSW 2205: 190, 191, 192
 Sullivan G 2/12 Willison St Bayswater Vic 3153: 302
 Tamar Valley Dairy 27 Montagu St Inverham Tas 7248: 156, 157, 158, 159, 160
 Tasmanian Highland Cheeses Thorpe Farm Bothwell Tas 7030: 401
 Tebbis P C/- Serco-Gardner M P O Box 21 Milpo Puckapunyal Vic 3662: 302
 Thomson Hadley Z C/- Serco-Gardner M P O Box 21 Milpo Puckapunyal Vic 3662: 302
 Timboon Farmhouse Cheese R M B 4130 Timboon Vic 3268: 137, 138, 142, 143, 147
 Top Paddock Cheeses 80 Fitzgerald'S Rd Bena Vic 3946: 146
 Tucker J 36 Proctor Cres Keilor Downs Vic 3038: 302, 303
 Unicorn Cheese 8 Investigator St Nowra NSW 2541: 137, 147
 United Milk Tasmania P O Box 21 Wynyard Tas 7325: 125, 126, 127, 128, 129, 199
 Warrnambool Mill Products Pty Ltd Ocean Rd Allansford Vic 3277: 125, 127, 128
 Watson L 28 Greenock Cres Wantirna Vic 3152: 302
 Wendy'S 36 Popes Rd Keysborough Vic 3173: 190, 191, 192, 193, 194
 Westhaven Dairy 89 Talbot Rd Launceston Tas 7249: 156, 158, 161, 175, 400, 401
 Weston A 122 Wattle Ave Werribee Vic 3030: 302
 Whitty A C/- Serco-Gardner M P O Box 21 Milpo Puckapunyal Vic 3662: 304
 Wild About You Bush Foods 33 Gardenvale Rd Gardenvale Vic 3185: 119, 122, 123, 124
 Williams C 5/112 Para Rd Montmorency Vic 3094: 302
 Willowbrae Chevre Cheese 143 Singleton Rd Wilberforce NSW 2756: 400, 402
 Wilson N 46 Osborne St Williamstown Vic 3016: 305

***The Royal Agricultural Society of Victoria is grateful to our
sponsors who generously support the Royal Melbourne Dairy
Show***

***Major Sponsor
The Australian Dairy Corporation
Leader Newspaper***

Trophy sponsors

Dragoco Australia

Chris' Greek Dips

Cryovac (Division of WR Grace)

Germantown Australia

Kraft Foods Limited

Quest International Australasia Ltd

Tweed Valley Fruit Processors

The University of Melbourne Gilbert Chandler College

Victorian Agricultural Societies' Association Inc

Supporters

***W Woodmasons Coldstorage
Whitehill Plate and Silver Company
The Hotel Sofitel***

Say Cheese!



The Leader Newspaper Group, publisher of 31 local newspapers, is proud to be associated with the 1999 Dairy awards as a major sponsor.

Your local Leader newspaper puts you in the picture and keeps you there! The coverage is unashamedly local, focussing on local people, local issues and events, community news, neighbourhood groups and societies, sports clubs and schools.

Leader newspapers are read by over 1.7 million readers throughout metropolitan Melbourne every week.

Leader Newspapers is a winning medium for both readers and advertisers!

To find out more about Leader Newspapers, telephone (03) 9875 8333.

 **LEADER**
Newspapers
Your leading local.

