



1996 RESULTS CATALOGUE

CONDUCTED BY



THE ROYAL AGRICULTURAL SOCIETY
OF VICTORIA LIMITED ACN 006728785



UNIVERSITY of BALLARAT
Proudly Flying the Flag

Sponsoring endeavour, diversity and achievement in brewing

**THE
LIQUORLAND**



LiquorLAND

THE 1996 LIQUORLAND AUSTRALIAN INTERNATIONAL BEER AWARDS

We gratefully acknowledge the support of the following companies.

MAJOR SPONSOR

Liquorland

TROPHY SPONSORS

Alfa Laval
Australian Wheat Board
Cultor Food Science
Cuno Pacific
Danzas/ Hammond International
Hobart Food Equipment
ISP (Polyclar) Pty Ltd
Joe White Maltings
Liquorland
New Zealand Hop Marketing Board
Quest International Australasia
The Regent Hotel Melbourne
The University of Ballarat
Whitehill Silver & Plate Company

THE 1996 LIQUORLAND AUSTRALIAN INTERNATIONAL BEER AWARDS TROPHY WINNERS

THE AUSTRALIAN INTERNATIONAL BEER AWARDS GRAND CHAMPION BEER Best Beer Exhibited

The South African Breweries - Prospecton Brewery - Black Label

THE UNIVERSITY OF BALLARAT VICE CHANCELLOR'S TROPHY Best Individual Australasian Brewery - Open Section.

DB Mainland Brewery - Timaru

THE LIQUORLAND TROPHY

Open Section - Best Lager - Class 1.

Exh. 143 Tooheys Pty Ltd

Hahn Ice - The Tooheys Auburn
Brewery Team

THE QUEST INTERNATIONAL TROPHY

Open Section - Best Reduced Alcohol Beer - Class 4.

Exh. 149 Tooheys Pty Ltd

Tooheys Blue Ice - The Tooheys
Auburn Brewery Team

THE CULTOR FOOD SCIENCE TROPHY

Open Section - Best Draught Lager - Class 5.

Exh. 225 DB Breweries
Waitemata Brewery

Export Gold

THE NEW ZEALAND HOP MARKETING BOARD TROPHY

Small Brewery Section - Best Lager - Class 8.

Exh. 109 Gold Coast Brewery Pty Ltd

Sanctuary Cove
Premium Lager

THE CUNO ZETAPLUS TROPHY

Small Brewery Section - Best Ale - Class 9.

Exh. 178 Fremantle Brewery

Mariner Bitter

THE UNIVERSITY OF BALLARAT, SCHOOL OF SCIENCE, BREWING STUDIES SHIELD

Small Brewery Section - Best Draught Ale - Class 12.

Exh. 272 Marlborough Brewing Co. Ltd

Steam Beer

THE AUSTRALIAN WHEAT BOARD TROPHY

Speciality Section - Best Wheat Beer - Class 14

Exh. 239 The Loaded Hog - Christchurch

Weiss Beer

THE ALFA LAVAL TROPHY

Speciality Section - Best Low Alcohol Beer - Class 15

Exh. 10 Coopers Brewery

Birell Premium

THE JOE WHITE MALTINGS TROPHY

International Section - Best Lager - Class 16

Exh. 64 The South African Breweries
Prospecton Brewery

Black Label

Improve Beer Foam and Cling with **Tetrahop[®]**



 **CULTOR**

Food Science

A.C.N. 070 811 095

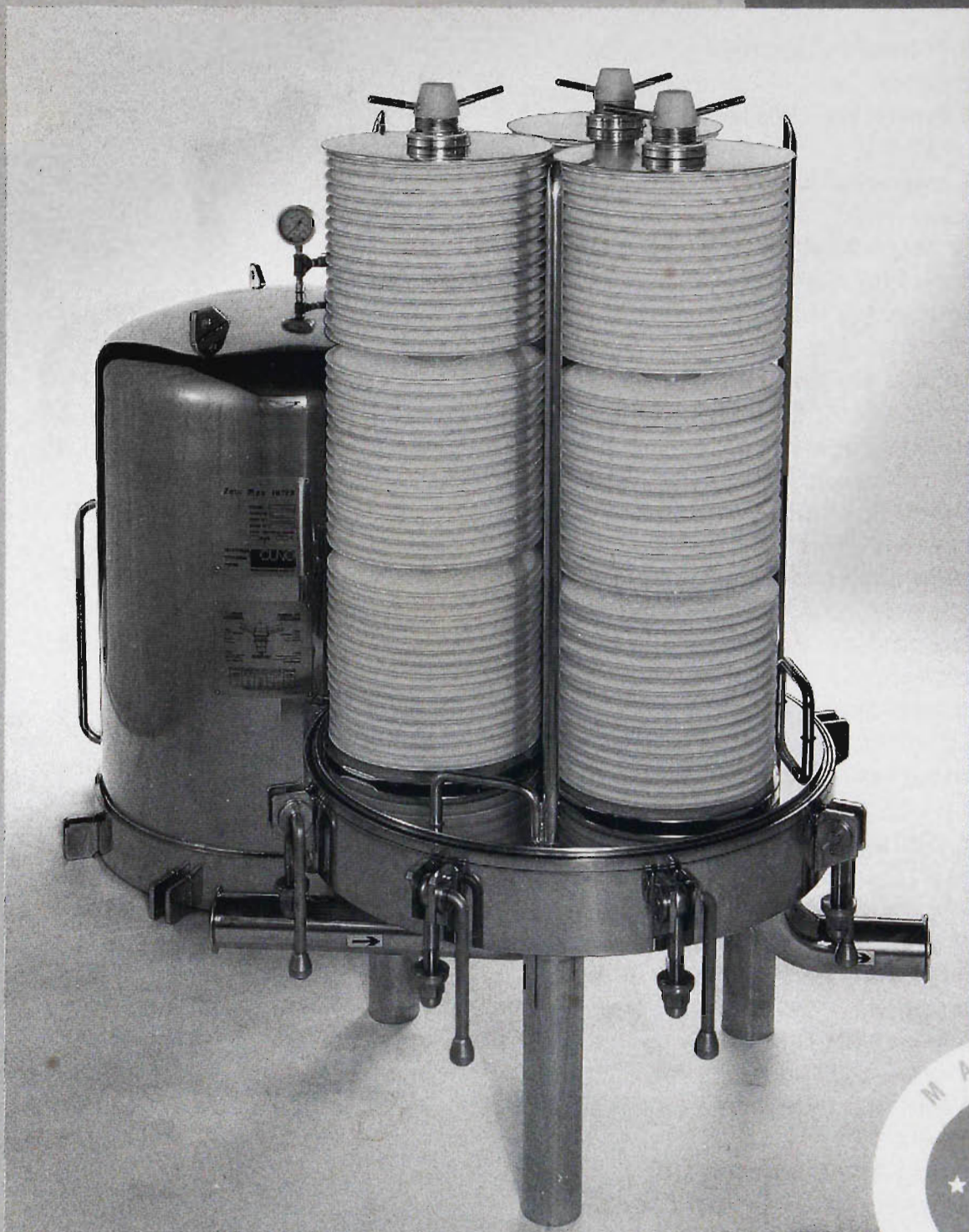
38/42 WHARF ROAD, WEST RYDE, N.S.W. AUSTRALIA
POSTAL ADDRESS: P.O. BOX 57, WEST RYDE, N.S.W. 2114

1996 SECTION CHAMPIONS

SECTION	EXHIBIT NO.	COMPANY	PRODUCT DESCRIPTION
OPEN	163	Monteith's Brewing Company	Monteith's Original Ale
SMALL BREWERY	235	Sail & Anchor Pub Brewery	Brass Monkey Stout
SPECIALITY	239	The Loaded Hog Christchurch	Weiss Beer
INTERNATIONAL	64	The South African Breweries Prospecton Brewery	Black Label

1996 BEST EXHIBIT IN EACH CLASS

CLASS NO.	EXHIBIT NO.	COMPANY	PRODUCT DESCRIPTION
1	143	Tooheys Pty Ltd	Hahn Ice - The Tooheys Auburn Brewery Team
2	163	Monteith's Brewing Company	Monteith's Original Ale
3	8	Coopers Brewery	Coopers Best Extra Stout
4	149	Tooheys Pty Ltd	Tooheys Blue Ice - The Tooheys Auburn Brewery Team
5	225	DB Breweries - Waitemata Brewery	Export Gold
6	152	Tooheys Pty Ltd	Tooheys Old - The Tooheys Auburn Brewery Team
7	131	Carlton Special Beverages	Cascade Special Stout
8	109	Gold Coast Brewery Pty Ltd	Sanctuary Cove Premium Lager
9	178	Fremantle Brewery	Mariner Bitter
10	202	Traditional Brewing Company	Razorback Stout
11	113	Gold Coast Brewery Pty Ltd	"Brew 13" Pilsner
12	272	Marlborough Brewing Co. Ltd	Steam Beer
13	235	Sail & Anchor Pub Brewery	Brass Monkey Stout
14	239	The Loaded Hog Christchurch	Weiss Beer
15	10	Coopers Brewery	Birell Premium
16	64	The South African Breweries Prospecton Brewery	Black Label
17	256	Associated Beer Importers	Tetley's Draught Yorkshire Bitter
18	16	PT Delta Djakarta	Gold Lion Extra Stout



For the premium, cost-effective method of cold filtration of beer, look no further than **Cuno ZetaPlus** Filter Cartridge Systems. Our filters are Australian made and are easily customised for any brewery.

Breweries in Australia, New Zealand, USA, Brazil, Japan, Korea and Europe trust the **Cuno ZetaPlus** Filter System to provide the sterile filtration of their important product.

Cuno ZetaPlus. Sterile filtration at its best.



CUNO

Filter Systems

Cuno Pacific Pty. Ltd.

Incorporated in New South Wales

140 Sunnyholt Rd,
Blacktown NSW 2148
TEL: 02 671 3700
FAX: 02 831 1737

OPEN SECTION

Class 1 - Lager- Original Gravity - any gravity.

86	DB Breweries Limited <i>DB Export Dry</i>	GOLD
221	DB Breweries - Waitemata Brewery <i>Export Dry</i>	GOLD
207	DB Mainland Brewery <i>Export Dry</i>	GOLD
194	The South Australian Brewing Co. Pty Ltd <i>Southwark Premium</i>	GOLD
143	Tooheys Pty Limited <i>Hahn Ice - The Tooheys Auburn Brewery Team</i>	GOLD
144	Tooheys Pty Limited <i>Tooheys Extra Dry - The Tooheys Auburn Brewery Team</i>	GOLD
156	Tooheys Pty Limited <i>Hahn Premium - The Hahn Brewery Team</i>	GOLD
125	Carlton Special Beverages <i>Cascade Premium Lager</i>	SILVER
126	Carlton Special Beverages <i>Cascade Pale Ale</i>	SILVER
167	Castlemaine Perkins <i>Castlemaine XXXX Bitter</i>	SILVER
168	Castlemaine Perkins <i>Castlemaine Special Dry Beer</i>	SILVER
169	Castlemaine Perkins <i>XXXX Original Draught</i>	SILVER
170	Castlemaine Perkins <i>XXXX DL Lager</i>	SILVER
1	Coopers Brewery <i>Coopers Draught</i>	SILVER
220	DB Breweries - Waitemata Brewery <i>Flame</i>	SILVER
85	DB Breweries Limited <i>Export Gold</i>	SILVER
208	DB Mainland Brewery <i>Export Gold</i>	SILVER
36	J. Boag & Son Brewing Ltd. <i>James Boag's Premium Lager</i>	SILVER
37	J. Boag & Son Brewing Ltd. <i>Boag's Original Bitter</i>	SILVER
38	J. Boag & Son Brewing Ltd. <i>Classic Bitter</i>	SILVER
39	J. Boag & Son Brewing Ltd. <i>Tasman Bitter</i>	SILVER
199	The South Australian Brewing Co. Pty Ltd <i>Hahn Longbrew</i>	SILVER
145	Tooheys Pty Limited <i>Tooheys Draught - The Tooheys Auburn Brewery Team</i>	SILVER
146	Tooheys Pty Limited <i>Hahn Longbrew - The Tooheys Auburn Brewery Team</i>	SILVER
217	Vanuatu Brewing Limited <i>Tusker Premium</i>	SILVER
2	Coopers Brewery <i>Coopers Dry Beer</i>	BRONZE

(class 1 continued)

40	J. Boag & Son Brewing Ltd. <i>Tasman Ice</i>	BRONZE
42	The Swan Brewery Company Pty Limited <i>1857 Pilsener</i>	BRONZE
	McCashins Brewery & Malthouse	-
24	<i>Mac's Gold</i>	-
218	Vanuatu Brewing Limited <i>Vanuatu Bitter</i>	-
219	Vanuatu Brewing Limited <i>Tusker Ice</i>	-
25	McCashins Brewery & Malthouse <i>Mac's Extra</i>	WD

WD- denotes withdrawn entry.

Class 2 - Ale- Original Gravity - any gravity.

6	Coopers Brewery <i>Coopers Sparkling Ale</i>	GOLD
211	DB Mainland Brewery <i>DB Bitter</i>	GOLD
209	DB Mainland Brewery <i>DB Draught</i>	GOLD
163	Monteith's Brewing Company <i>Monteith's Original Ale</i>	GOLD
5	Coopers Brewery <i>Coopers Black Crow</i>	SILVER
7	Coopers Brewery <i>Coopers Original Pale Ale</i>	SILVER
4	Coopers Brewery <i>Coopers Premium Clear Ale</i>	SILVER
3	Coopers Brewery <i>Thomas Cooper's Finest Export Beer</i>	SILVER
224	DB Breweries - Waitemata Brewery <i>DB Bitter</i>	SILVER
222	DB Breweries - Waitemata Brewery <i>DB Draught</i>	SILVER
223	DB Breweries - Waitemata Brewery <i>DB Natural</i>	SILVER
89	DB Breweries Limited <i>DB Bitter</i>	SILVER
87	DB Breweries Limited <i>DB Draught</i>	SILVER
88	DB Breweries Limited <i>Tui East India Pale Ale</i>	SILVER
210	DB Mainland Brewery <i>DB Natural</i>	SILVER
275	Otago Draught Ale Ltd. <i>Otago Draught Ale</i>	SILVER
147	Tooheys Pty Limited <i>Tooheys Old Black Ale - The Tooheys Auburn Brewery Team</i>	SILVER
117	Kaiapoi Brewery / Southern Grain Spirits (NZ) Ltd. <i>Kaiapoi Draught</i>	BRONZE
27	McCashins Brewery & Malthouse <i>Black Mac</i>	BRONZE
26	McCashins Brewery & Malthouse <i>Mac's Ale</i>	WD

Class 3 - Stout- Original Gravity - any gravity.

8	Coopers Brewery <i>Coopers Best Extra Stout</i>	GOLD
127	Carlton Special Beverages <i>Cascade Special Stout</i>	BRONZE
277	Otago Draught Ale Ltd. <i>Otago Strong Ale</i>	BRONZE
195	The South Australian Brewing Co. Pty Ltd <i>Old Southwark Stout</i>	BRONZE
175	Castlemaine Perkins <i>Carbine Stout - Brewed by Castlemaine Perkins</i>	-

Class 4 - Reduced Alcohol - 1.15% - 3.5% v/v.

172	Castlemaine Perkins <i>Castlemaine XXXX Light Bitter</i>	SILVER
174	Castlemaine Perkins <i>Hahn Gold - Brewed by Castlemaine Perkins for Hahn Brewery</i>	SILVER
9	Coopers Brewery <i>Coopers Light</i>	SILVER
149	Tooheys Pty Limited <i>Tooheys Blue Ice - The Tooheys Auburn Brewery Team</i>	SILVER
171	Castlemaine Perkins <i>Castlemaine XXXX Gold Lager</i>	BRONZE
173	Castlemaine Perkins <i>Castlemaine XL Bitter</i>	BRONZE
198	The South Australian Brewing Co. Pty Ltd <i>Eagle Blue Ice</i>	BRONZE
148	Tooheys Pty Limited <i>Tooheys Blue - The Tooheys Auburn Brewery Team</i>	BRONZE
41	J. Boag & Son Brewing Ltd. <i>Tasman Special Bitter</i>	-
43	The Swan Brewery Company Pty Limited <i>1857 Bitter</i>	-

Class 5 - Lager (draught) - Original Gravity - any gravity.

225	DB Breweries - Waitemata Brewery <i>Export Gold</i>	SILVER
151	Tooheys Pty Limited <i>Hahn Ice - The Tooheys Auburn Brewery Team</i>	SILVER
130	Carlton Special Beverages <i>Cascade Pale Ale</i>	BRONZE
132	Carlton Special Beverages <i>Stella Artois</i>	BRONZE
90	DB Breweries Limited <i>Export Gold</i>	BRONZE
150	Tooheys Pty Limited <i>Tooheys New - The Tooheys Auburn Brewery Team</i>	BRONZE
157	Tooheys Pty Limited <i>Tooheys New - The Tooheys Grafton Brewery Team</i>	BRONZE
159	Tooheys Pty Limited <i>Hahn Premium - The Hahn Brewery Team</i>	BRONZE
129	Carlton Special Beverages <i>Matilda Bay Pils</i>	WD

Class 6 - Ale (draught) - Original Gravity - any gravity.

164	Monteith's Brewing Company <i>Monteith's Original Ale</i>	SILVER
276	Otago Draught Ale Ltd. <i>Otago Draught Ale</i>	SILVER
152	Tooheys Pty Limited <i>Tooheys Old - The Tooheys Auburn Brewery Team</i>	SILVER
158	Tooheys Pty Limited <i>Tooheys Old - The Tooheys Grafton Brewery Team</i>	SILVER
226	DB Breweries - Waitemata Brewery <i>DB Draught</i>	BRONZE
227	DB Breweries - Waitemata Brewery <i>DB Bitter</i>	BRONZE
91	DB Breweries Limited <i>DB Draught</i>	BRONZE
92	DB Breweries Limited <i>Tui East India Pale Ale</i>	BRONZE
93	DB Breweries Limited <i>DB Bitter</i>	BRONZE
28	McCashins Brewery & Malthouse <i>Mac's Ale</i>	WD
29	McCashins Brewery & Malthouse <i>Black Mac</i>	WD

Class 7 - Stout (draught) - Original Gravity - any gravity.

131	Carlton Special Beverages <i>Cascade Special Stout</i>	BRONZE
94	DB Breweries Limited <i>Mainland Dark</i>	BRONZE
278	Otago Draught Ale Ltd. <i>Otago Strong Ale</i>	BRONZE

Proof positive

Equipment and technology are among the high quality ingredients needed to brew the best beers. So it says a lot for Alfa Laval that many of the best beers in the world flow through our products.

Engineering, design, projects, installation, CIP, automation, plant optimization and commissioning are other high quality ingredients we can supply for your brewing process.

Alfa Laval is part of the world-wide Tetra Laval group. For the local Brewer it means we are always near at hand. For the multi-national, you can expect consistency and quality in products, systems and services in the same global environment.

And not least, our customer service network ensures reliable back-up and prompt spare parts supply to keep your production at peak performance.

Alfa Laval



SMALL BREWERY SECTION

Class 8 - Lager - Original Gravity - any gravity.

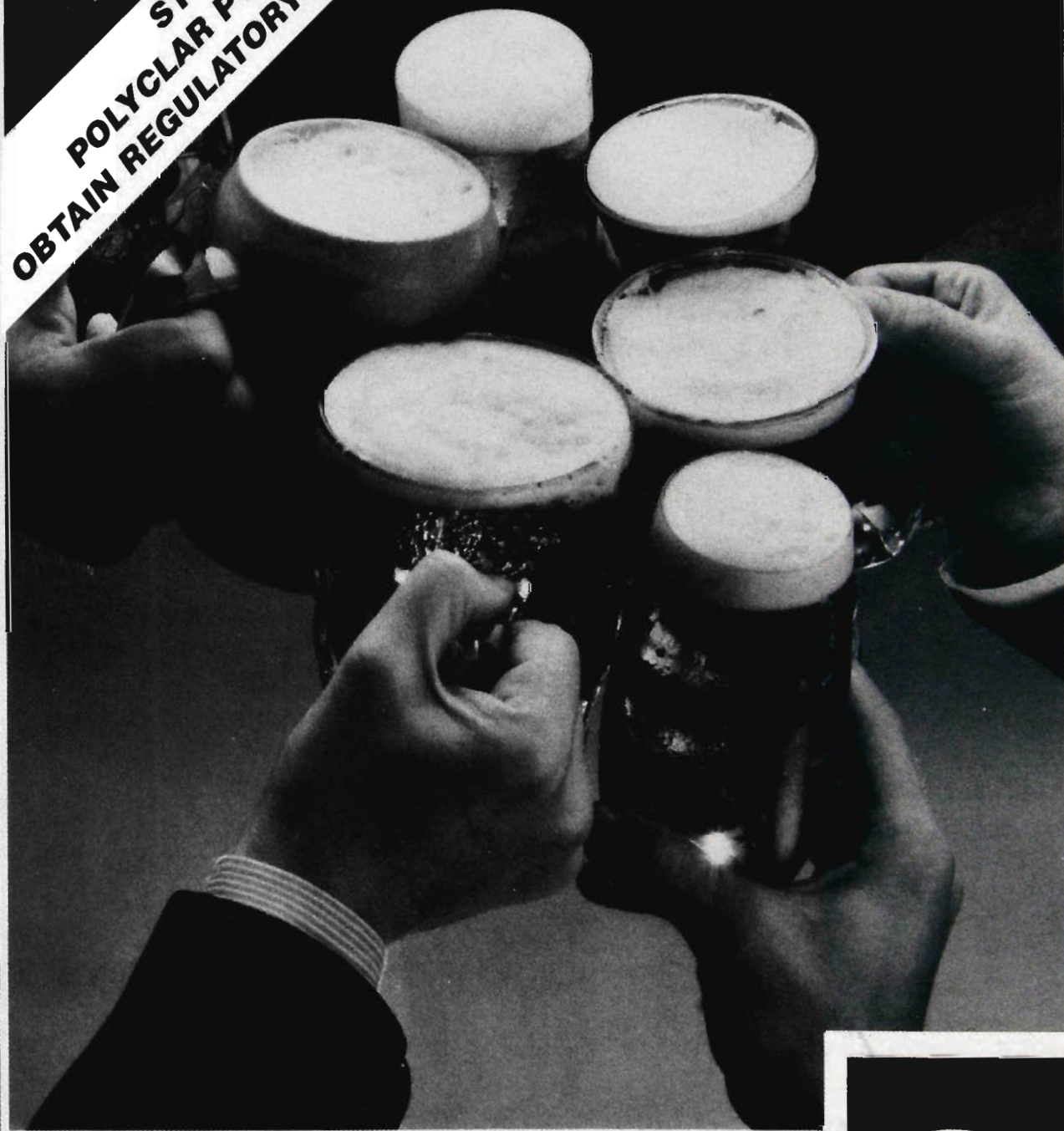
109	Gold Coast Brewery Pty Ltd <i>Sanctuary Cove Premium Lager</i>	SILVER
104	The Loaded Hog - Auckland Ltd <i>Hog Gold Lager</i>	SILVER
133	Brofords Brewery <i>Stolberg Lager</i>	BRONZE
134	Brofords Brewery <i>Hooker Beer</i>	BRONZE
257	Dux de Lux <i>De Lux Lager</i>	BRONZE
110	Gold Coast Brewery Pty Ltd <i>Cane Toad Beer</i>	BRONZE
236	The Loaded Hog - Christchurch <i>Hog Gold Lager</i>	BRONZE
100	The Loaded Hog - Wellington Ltd <i>Hog Gold Lager</i>	BRONZE
189	Australian Pizza Kitchen (APK) Brewery <i>Angel Tears Pilsner</i>	-
179	Grogfathers Brewery <i>Grogfather's Lager</i>	-
180	Grogfathers Brewery <i>Neddy's Nectar</i>	-
183	Grogfathers Brewery <i>Capone's Bullet</i>	-
46	Resort Brewing Company Ltd. <i>Wakatipu Gold Lager - Mc Neills Brewery</i>	-
35	Royal Beer Company <i>Royal All Malt Premium Beer</i>	-
138	Scharers Little Brewery <i>Scharers Lager</i>	-
139	Scharers Little Brewery <i>Burraborang Bock Lager Style</i>	-
71	Steam Brewing Co. Ltd <i>Classic Draught</i>	-
72	Steam Brewing Co. Ltd <i>Helles Lager</i>	-
73	Steam Brewing Co. Ltd <i>Pilsner</i>	-
263	Valley Brewing Co. Ltd. <i>Valley Pale Lager</i>	-

Class 9 - Ale - Original Gravity - any gravity.

178	Fremantle Brewery <i>Mariner Bitter</i>	SILVER
75	Steam Brewing Co. Ltd <i>Steam Beer</i>	SILVER
267	Valley Brewing Co. Ltd. <i>Norwester Pale Ale</i>	SILVER
258	Dux de Lux <i>Blue Duck Draught</i>	BRONZE
259	Dux de Lux <i>Hereford Bitter</i>	BRONZE
260	Dux de Lux <i>Norwester Pale Ale</i>	BRONZE
115	Kaiapoi Brewery / Southern Grain Spirits (NZ) Ltd. <i>Kaiapoi Draught</i>	BRONZE
269	Marlborough Brewing Co. Ltd. <i>Steam Beer</i>	BRONZE
74	Steam Brewing Co. Ltd <i>Dark Star</i>	BRONZE
84	Steam Brewing Co. Ltd <i>Braveheart</i>	BRONZE
237	The Loaded Hog - Christchurch <i>Hogshead Dark Ale</i>	BRONZE
101	The Loaded Hog - Wellington Ltd <i>Red Dog Lager</i>	BRONZE
200	Traditional Brewing Co. <i>Yellow Mongrel Export</i>	BRONZE
245	Bells Hotel & Brewery <i>Black Ban Bitter</i>	-
135	Brofords Brewery <i>Buchanan's Special Dark Ale</i>	-
137	Brofords Brewery <i>Western Bitter</i>	-
181	Grogfathers Brewery <i>Shotgun Ale</i>	-
47	Resort Brewing Company Ltd. <i>Moonlight real Ale- Mc Neills Brewery</i>	-
48	Resort Brewing Company Ltd. <i>Classic Black- Mc Neills Brewery</i>	-
105	The Loaded Hog - Auckland Ltd <i>Red Dog Draught</i>	-
106	The Loaded Hog - Auckland Ltd <i>Hogs Head Dark Ale</i>	-
238	The Loaded Hog - Christchurch <i>Red Dog Draught</i>	-
102	The Loaded Hog - Wellington Ltd <i>Hogs Head Dark Ale</i>	-
201	Traditional Brewing Co. <i>Loaded Dog Steam Beer</i>	-
264	Valley Brewing Co. Ltd. <i>Piston Draught</i>	-
265	Valley Brewing Co. Ltd. <i>Stokes Dark</i>	-
266	Valley Brewing Co. Ltd. <i>Heritage Light</i>	-
270	Marlborough Brewing Co. Ltd. <i>Red Devil Draught</i>	WD

POLYCLAR[®] STABILIZERS

**STOP PRESS!
POLYCLAR PVPP STABILISERS
OBTAIN REGULATORY APPROVAL IN JAPAN**



Processing aids for beer worldwide

ISP (AUSTRALASIA) PTY. LIMITED A.C.N. 000 011 923

1st Floor 991 Whitehorse Road Box Hill Vic 3128 Australia

Tel: (03) 9899 5082 Fax: (03) 9899 5102

(PO Box 221 Box Hill 3128)

ISP[®]

Class 10 - Stout - Original Gravity - any gravity.

202	Traditional Brewing Co. <i>Razorback Stout</i>	SILVER
190	Australian Pizza Kitchen (APK) Brewery <i>Black Opal Stout</i>	BRONZE
262	Dux de Lux <i>Black Shag Stout</i>	BRONZE
182	Grogfathers Brewery <i>Gollan Stout</i>	BRONZE
76	Steam Brewing Co. Ltd <i>O'Toole's Stout</i>	BRONZE
268	Valley Brewing Co. Ltd. <i>Souwester Stout</i>	BRONZE
246	Bells Hotel & Brewery <i>Bells Irish Stout</i>	-
136	Brofords Brewery <i>Black Brute Stout</i>	-
261	Dux de Lux <i>Souwester Stout</i>	-
116	Kaiapoi Brewery / Southern Grain Spirits (NZ) Ltd. <i>Black Panther Dark</i>	-

Class 11 - Lager (draught) - Original Gravity - any gravity.

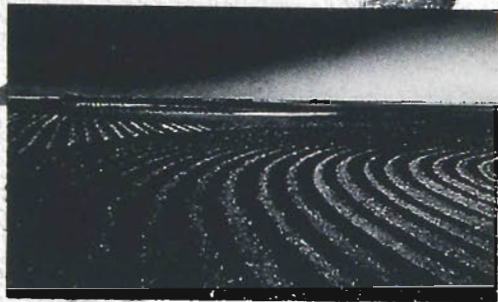
282	Buffalo Brewery <i>Buffalo Brewery Lager</i>	SILVER
191	Elizabethan Village Brewery <i>Brewhouse Pils</i>	SILVER
113	Gold Coast Brewery Pty Ltd <i>"Brew 13" Pilsner</i>	SILVER
114	Gold Coast Brewery Pty Ltd <i>Mariner's Gold</i>	SILVER
249	Harringtons Brewery <i>Draught</i>	SILVER
255	Harringtons Brewery <i>Ngahere Gold</i>	SILVER
20	Canterbury Independent Brewery <i>Premium Lager</i>	BRONZE
192	Elizabethan Village Brewery <i>Brewhouse dark Lager</i>	BRONZE
193	Elizabethan Village Brewery <i>Brewhouse Light Lager</i>	BRONZE
112	Gold Coast Brewery Pty Ltd <i>Cane Toad Beer</i>	BRONZE
248	Harringtons Brewery <i>Kiwi Draught</i>	BRONZE
250	Harringtons Brewery <i>Lager</i>	BRONZE
251	Harringtons Brewery <i>Feinlager</i>	BRONZE
52	Rifle Brigade Brewery <i>Bullion Lager</i>	BRONZE
53	Rifle Brigade Brewery <i>Old Fashioned Bitter</i>	BRONZE
188	St Ives Brewery <i>Old B</i>	BRONZE
108	The Loaded Hog - Auckland Ltd <i>Hog Gold Lager</i>	BRONZE

111	Gold Coast Brewery Pty Ltd <i>Sanctuary Cove Premium Lager</i>	-
184	Grogfathers Brewery <i>Grogfather's Lager</i>	-
185	Grogfathers Brewery <i>Capone's Bullet</i>	-
252	Harringtons Brewery <i>Dark</i>	-
253	Harringtons Brewery <i>Razorback</i>	-
254	Harringtons Brewery <i>Big John</i>	-
271	Marlborough Brewing Co. Ltd. <i>Marlborough Gold</i>	-
21	Nelson Bay Brewery <i>Bays Gold Lager</i>	-
49	Resort Brewing Company Ltd. <i>Wakatipu Gold Lager - Mc Neills Brewery</i>	-
54	Rifle Brigade Brewery <i>Ironbark Dark</i>	-
187	St Ives Brewery <i>Gold Lager</i>	-
77	Steam Brewing Co. Ltd <i>Classic Draught</i>	-
78	Steam Brewing Co. Ltd <i>Helles Lager</i>	-
79	Steam Brewing Co. Ltd <i>Pilsner</i>	-
240	The Loaded Hog - Christchurch <i>Hog Gold Lager</i>	-

Class 12 - Ale (draught) - Original Gravity - any gravity.

18	Canterbury Independent Brewery <i>Forge Draught - Ale</i>	SILVER
272	Marlborough Brewing Co. Ltd. <i>Steam Beer</i>	SILVER
273	Marlborough Brewing Co. Ltd. <i>Red Devil Draught</i>	SILVER
81	Steam Brewing Co. Ltd <i>Steam Beer</i>	SILVER
244	Bells Hotel & Brewery <i>Bells Real Ale</i>	BRONZE
247	Bells Hotel & Brewery <i>Best Bitter</i>	BRONZE
274	Marlborough Brewing Co. Ltd. <i>Marlborough Draught</i>	BRONZE
233	Sail & Anchor Pub Brewery <i>Seven Seas Real Ale</i>	BRONZE
241	The Loaded Hog - Christchurch <i>Hogshead Dark Ale</i>	BRONZE
242	Bells Hotel & Brewery <i>Black Ban Bitter</i>	-
19	Canterbury Independent Brewery <i>Premium Dark - Ale</i>	-
186	Grogfathers Brewery <i>Shotgun Ale</i>	-
22	Nelson Bay Brewery <i>Bays Draught Ale</i>	-

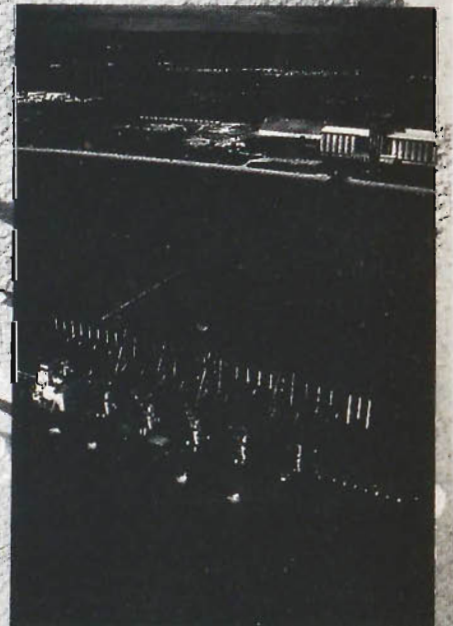
Behind every graingrower...



Behind every successful
graingrower someone has
developed the market,
managed the risk,
rewarded the quality,
serviced the customer,
marketed the grain,
looked to the future...

someone.

The AWB.



THE NEW ZEALAND HOP MARKETING BOARD
IS PROUD TO BE A SPONSOR OF THE
1996 AUSTRALIAN INTERNATIONAL BEER AWARDS



NEW ZEALAND HOPS

PURE, CLEAN AND NATURAL
A TRADITION OF QUALITY

Produce a real beer with clean, fresh aroma hops or hop pellets with an alpha content far superior to others.

Available in leaf and pellet form in *Super Alpha*, *Green Bullet*, *Sticklebract*, *Pacific Gem*, *Southern Cross* and *New Zealand Hallertau Aroma* varieties.



Phone (64)03-544 1151
(64)03-544 8989
Fax (64)03-544 6007

PO Box 3205
Richmond
Nelson
New Zealand

"FROM GROWER TO BREWER"

23	Nelson Bay Brewery <i>Bays Dark Ale</i>	-
285	Port Dock Brewery Hotel <i>Port Dock Light</i>	-
286	Port Dock Brewery Hotel <i>Lighthouse Ale</i>	-
287	Port Dock Brewery Hotel <i>Black Diamond</i>	-
288	Port Dock Brewery Hotel <i>Old Preacher</i>	-
50	Resort Brewing Company Ltd. <i>Moonlight Real Ale- Mc Neills Brewery</i>	-
51	Resort Brewing Company Ltd. <i>Classic Black- Mc Neills Brewery</i>	-
234	Sail & Anchor Pub Brewery <i>Iron Brew Strong Ale</i>	-
80	Steam Brewing Co. Ltd <i>Dark Star</i>	-
165	The Loaded Hog - Auckland Ltd <i>Hogshead Dark Ale</i>	-
203	Traditional Brewing Co. <i>Yellow Mongrel</i>	-
204	Traditional Brewing Co. <i>Loaded Dog Steam Beer</i>	-

Class 13 - Stout (draught) - Original Gravity - any gravity.

235	Sail & Anchor Pub Brewery <i>Brass Monkey Stout</i>	SILVER
205	Traditional Brewing Co. <i>Razorback Stout</i>	SILVER
82	Steam Brewing Co. Ltd <i>O'Toole's Stout</i>	BRONZE
243	Bells Hotel & Brewery <i>Bells Irish Stout</i>	-

SPECIALITY SECTION

Class 14 - Wheat Beer.

128	Carlton Special Beverages <i>Redback Original</i>	SILVER
239	The Loaded Hog - Christchurch <i>Weiss Bier</i>	SILVER
83	Steam Brewing Co. Ltd <i>Wheat Beer</i>	BRONZE
107	The Loaded Hog - Auckland Ltd <i>Weiss Bier</i>	-
103	The Loaded Hog - Wellington Ltd <i>Weiss Bier</i>	-
206	Traditional Brewing Co. <i>Yellow Mongrel Export</i>	-

Class 15 - Low Alcohol - less than 1.1% v/v.

10	Coopers Brewery <i>Birell Premium</i>	BRONZE
30	McCashins Brewery & Malthouse <i>Mac's Special Light</i>	-

MELBOURNE ● ADELAIDE ● BALLARAT ● BRISBANE ● DEVONPORT ● PERTH ● TAMWORTH

Australia's Finest Malts



- ▶ Finest Australian pale malt, roasted & speciality malts
- ▶ Highest quality raw materials
- ▶ Expert technical advice
- ▶ In excess of 250,000 tonnes capacity
- ▶ ISO 9002 International Quality Standards

**ASK FOR A
FREE SAMPLE KIT
ROASTED & SPECIALITY
PRODUCTS**

*For further information,
samples and quotations,
please contact:*



Joe White Maltings Limited

105 Victoria Pde, Collingwood,
Victoria, Australia 3066

Telephone: (61) (3) 9419 7411

Facsimile: (61) (3) 9419 4218 Telex: AA 32725

MELBOURNE ● ADELAIDE ● BALLARAT ● BRISBANE ● DEVONPORT ● PERTH ● TAMWORTH

INTERNATIONAL SECTION

Class 16 - Lager - Original Gravity - any gravity.

118	Carlton Special Beverages <i>Moosehead</i>	GOLD
121	Carlton Special Beverages <i>Molson Ice</i>	GOLD
229	DB Breweries - Waitemata Brewery <i>Export Dry</i>	GOLD
95	DB Breweries Limited <i>DB Export Dry</i>	GOLD
212	DB Mainland Brewery <i>Export Dry</i>	GOLD
60	The South African Breweries <i>Lion Lager - Rosslyn Brewery</i>	GOLD
61	The South African Breweries <i>Black Label - Rosslyn Brewery</i>	GOLD
63	The South African Breweries <i>Lion Lager- Prospecton Brewery</i>	GOLD
64	The South African Breweries <i>Black Label - Prospecton Brewery</i>	GOLD
66	The South African Breweries <i>Lion Lager - Port Elizabeth Brewery</i>	GOLD
196	The South Australian Brewing Co. Pty Ltd <i>Southwark Premium</i>	GOLD
153	Tooheys Pty Limited <i>Hahn Ice - The Tooheys Auburn Brewery Team</i>	GOLD
154	Tooheys Pty Limited <i>Tooheys Extra Dry - The Tooheys Auburn Brewery Team</i>	GOLD
12	Asia Pacific Breweries (S) Pty Ltd <i>Tiger Beer</i>	SILVER
14	Asia Pacific Breweries (S) Pty Ltd <i>Raffles Light Beer</i>	SILVER
15	Asia Pacific Breweries (S) Pty Ltd <i>Tiger Can (LAGER)</i>	SILVER
55	Bass Beers Worldwide <i>Tennents Lager Beer</i>	SILVER
120	Carlton Special Beverages <i>Asahi Super Dry</i>	SILVER
122	Carlton Special Beverages <i>Miller Genuine Draught</i>	SILVER
123	Carlton Special Beverages <i>Stella Artois</i>	SILVER
166	Coors Brewing Co. <i>Coors Original Banquet Beer</i>	SILVER
228	DB Breweries - Waitemata Brewery <i>Flame</i>	SILVER
96	DB Breweries Limited <i>Export Gold</i>	SILVER
213	DB Mainland Brewery <i>Export Gold</i>	SILVER
58	Jinro-Coors Brewing Company Ltd / Cheongwon Brewery <i>Cass/Cass Fresh Beer</i>	SILVER
161	Oriental Brewery Co. Ltd. <i>Nex</i>	SILVER
162	Oriental Brewery Co. Ltd. <i>Cafri</i>	SILVER
68	S.Smith & Son Pty Ltd <i>San Miguel - Philippines</i>	SILVER

70	S.Smith & Son Pty Ltd <i>Singha - Thailand</i>	SILVER
140	Saigon Brewery Company <i>Export Beer</i>	SILVER
141	Saigon Brewery Company <i>Domestic Beer</i>	SILVER
142	Saigon Brewery Company 333	SILVER
279	Simonds Farsons Cisk Ltd. <i>Cisk Lager</i>	SILVER
59	The South African Breweries <i>Castle Lager - Rosslyn Brewery</i>	SILVER
62	The South African Breweries <i>Castle Lager - Prospecton Brewery</i>	SILVER
65	The South African Breweries <i>Castle Lager - Port Elizabeth Brewery</i>	SILVER
67	The South African Breweries <i>Black Label - Port Elizabeth Brewery</i>	SILVER
155	Tooheys Pty Limited <i>Hahn Longbrew - The Tooheys Auburn Brewery Team</i>	SILVER
283	Tucker Seabrook (Aust.) Pty Ltd <i>Grolsch Twin Pack Swingtop</i>	SILVER
13	Asia Pacific Breweries (S) Pty Ltd <i>Tiger Classic Beer</i>	BRONZE
119	Carlton Special Beverages <i>Beck's</i>	BRONZE
124	Carlton Special Beverages <i>Kronenbourg</i>	BRONZE
160	Oriental Brewery Co. Ltd. <i>OB Lager</i>	BRONZE
69	S.Smith & Son Pty Ltd <i>Pilsner Urquell - Czech Republic</i>	BRONZE
11	South Pacific Breweries Limited- Gordons Brewery <i>Niugini Cold Ice Beer</i>	BRONZE
44	Swift & Moore Pty Ltd <i>Carlsberg Green</i>	BRONZE
45	Swift & Moore Pty Ltd <i>Carlsberg Elephant</i>	BRONZE
284	Tucker Seabrook (Aust.) Pty Ltd <i>Grosch Amber Swingtop</i>	BRONZE
31	McCashins Brewery & Malthouse <i>Mac's Gold</i>	-
176	M/S United Breweries Limited <i>Kingfisher Premium Lager</i>	WD
177	M/S United Breweries Limited <i>Kalyani Export Special Premium Lager</i>	WD
32	McCashins Brewery & Malthouse <i>Mac's Extra</i>	WD

Class 17 - Ale - Original Gravity - any gravity.

256	Associated Beer Importers <i>Tetley's Draught Yorkshire Bitter</i>	GOLD
215	DB Mainland Brewery <i>DB Draught</i>	GOLD
216	DB Mainland Brewery <i>DB Bitter</i>	GOLD
280	Simonds Farsons Cisk Ltd. <i>Hopleaf Pale Ale</i>	GOLD

56	Bass Beers Worldwide <i>Bass Pale Ale</i>	SILVER
230	DB Breweries - Waitemata Brewery <i>DB Draught</i>	SILVER
231	DB Breweries - Waitemata Brewery <i>DB Bitter</i>	SILVER
232	DB Breweries - Waitemata Brewery <i>DB Natural</i>	SILVER
97	DB Breweries Limited <i>DB Draught</i>	SILVER
98	DB Breweries Limited <i>Tiu East India Pale Ale</i>	SILVER
99	DB Breweries Limited <i>DB Bitter</i>	SILVER
214	DB Mainland Brewery <i>DB Natural</i>	SILVER
34	McCashins Brewery & Malthouse <i>Black Mac</i>	BRONZE
281	Simonds Farsons Cisk Ltd. <i>Blue Label Ale</i>	BRONZE
33	McCashins Brewery & Malthouse <i>Mac's Ale</i>	WD

Class 18 - Stout - Original Gravity - any gravity.

57	Bass Beers Worldwide <i>Tennents Stout</i>	SILVER
16	PT Delta Djakarta <i>Gold Lion Extra Stout</i>	SILVER
17	PT Delta Djakarta <i>Anker Stout</i>	SILVER
197	The South Australian Brewing Co. Pty Ltd <i>Old Southwark Stout</i>	BRONZE

WORKING WITH YOU IN THE BREWERY

• EXTRACTS • HEADING AGENTS • TECHNICAL ASSISTANCE • ENZYMES • FININGS • STABILISERS



 **QUEST INTERNATIONAL**

QUEST INTERNATIONAL AUSTRALIA LIMITED 382 WELLINGTON ROAD, MULGRAVE VIC. 3170 TEL: (03) 9545 0288 FAX: (03) 9545 0299

QUEST INTERNATIONAL AUSTRALIA LIMITED 12 BRITTON STREET, SMITHFIELD NSW 2164. TEL: (02) 827 4000 FAX: (02) 827 4041

QUEST INTERNATIONAL NEW ZEALAND LIMITED 12 AVERTON PLACE, EAST TAMAKI, AUCKLAND, NEW ZEALAND. TEL: (09) 274 5393 FAX: (09) 274 4734



GRADUATE DIPLOMA IN MALTING AND BREWING

A course unique in Australia providing training in both Malting and Brewing in block release mode. This one year block release mode course is well established and recognised both within Australia and overseas, including the Institute of Brewing.

It provides theoretical and practical applied training and is undertaken both by industry personnel and those planning a career in the industry.

BACHELOR OF APPLIED SCIENCE (Food Technology)

The Bachelor of Applied Science provides high quality training for the food and beverage industry. This three year course has produced graduates to the relevant industries for over a decade and has excellent standing.

For Further information please contact:

Robert Greig

School of Science

(053) 279 249 or Fax (053) 279 240

Mobile (015) 051 369

University of Ballarat

PO Box 663 Ballarat Vic 3353

THE 1996 LIQUORLAND AUSTRALIAN INTERNATIONAL BEER AWARDS

We gratefully acknowledge the support of the following companies.

MAJOR SPONSOR

Liquorland

TROPHY SPONSORS

Alfa Laval
Australian Wheat Board
~~Cultor Food Science~~
~~Cuno Pacific~~
Danzas/ Hammond International
Hobart Food Equipment
ISP (Polyclar) Pty Ltd
Joe White Maltings
Liquorland
New Zealand Hop Marketing Board
Quest International Australasia
The Regent Hotel Melbourne
The University of Ballarat
Whitehill Silver & Plate Company



HERITAGE
726

